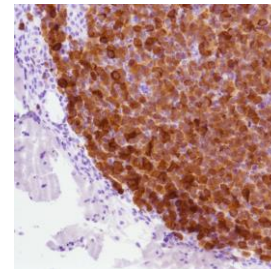




## Rabbit Anti-Human ALK/p80 Monoclonal Antibody (Clone SP8)

<b>CATALOG #:</b>	<b>M3080</b>	0.1 ml rabbit monoclonal antibody supplied as tissue culture supernatant in TBS/1% BSA buffer pH 7.5 with less than 0.1% sodium azide.
	<b>M3082</b>	0.5 ml rabbit monoclonal antibody supplied as tissue culture supernatant in TBS/1% BSA buffer pH 7.5 with less than 0.1% sodium azide.
	<b>M3084</b>	1.0 ml rabbit monoclonal antibody supplied as tissue culture supernatant in TBS/1% BSA buffer pH 7.5 with less than 0.1% sodium azide.
	<b>M3081</b>	7.0 ml pre-diluted rabbit monoclonal antibody supplied as tissue culture supernatant in TBS/1% BSA buffer pH 7.6 with less than 0.1% sodium azide.



*Human anaplastic lymphoma stained with anti-ALK antibody*

<b>INTENDED USE:</b>	For Research Use Only. Not for use in diagnostic procedures.
<b>CLONE:</b>	SP8
<b>IMMUNOGEN:</b>	Recombinant protein corresponding to a region which spans the tyrosine kinase catalytic domain and part of the C-terminus of the NPM-ALK transcript.
<b>IG ISOTYPE:</b>	Rabbit IgG
<b>EPITOPE:</b>	Not determined
<b>MOLECULAR WEIGHT</b>	80kDa
<b>SPECIES REACTIVITY:</b>	Human (tested). (See <a href="http://www.springbio.com">www.springbio.com</a> for information on species reactivity predicted by sequence homology.)
<b>DESCRIPTION:</b>	This antibody recognizes a human p80 protein, identified as a hybrid of the anaplastic lymphoma kinase (ALK) gene and the nucleophosmin (NPM) gene resulting from the t(2;5)(p23;q35) translocation found in a third of large cell lymphomas. This antibody can be used to detect p80 in these lymphomas and may also be used to detect a subtype of large B cell lymphoma, which expresses the full-length ALK protein.
<b>APPLICATIONS:</b>	Immunohistochemistry (IHC)
<b>IHC PROCEDURE:</b>	<b>Specimen Preparation:</b> Formalin-fixed, paraffin-embedded tissues are suitable for use with this primary antibody. <b>Deparaffinization:</b> Deparaffinize slides using xylene or xylene alternative and graded alcohols. <b>Antibody Dilution:</b> If using the concentrate format of this product, dilute the antibody 1:100. The dilutions are estimates; actual results may differ because of variability in methods and protocols. <b>Antigen Retrieval:</b> Boil tissue section in 10mM citrate buffer, pH 6.0 for 10 min followed by cooling at room temperature for 20 min. <b>Primary Antibody Incubation:</b> Incubate for 30 minutes at room temperature. <b>Slide Washing:</b> Slides must be washed in between steps. Rinse slides with PBS/0.05% Tween. <b>Visualization:</b> Detect the antibody as instructed by the instructions provided with the visualization system.
<b>POSITIVE CONTROL:</b>	Anaplastic lymphoma
<b>CELLULAR LOCALIZATION:</b>	Cytoplasm, nucleus
<b>STORAGE &amp; STABILITY</b>	Store at 2-8°C. Do not freeze. The user must validate any other storage conditions. When properly stored, the reagent is stable to the date indicated on the label. Do not use the reagent beyond the expiration date. There are no definitive signs to indicate instability of this product; therefore, positive and negative controls should be tested simultaneously with unknown specimens. If unexpected results are observed which cannot be explained by variations in laboratory procedures and a problem with the reagent is suspected, contact Technical Support at <a href="mailto:spring.tech@ventana.roche.com">spring.tech@ventana.roche.com</a> .
<b>WARNINGS &amp; PRECAUTIONS:</b>	<ol style="list-style-type: none"><li>1. Avoid contact of reagents with eyes and mucous membranes. If reagents come into contact with sensitive areas, wash with copious amounts of water.</li><li>2. This product is harmful if swallowed.</li><li>3. Consult local or state authorities with regard to recommended method of disposal.</li><li>4. Avoid microbial contamination of reagents.</li></ol>