

ABflo® 647-conjugated Goat Anti-Mouse IgG (H+L)

Catalog No.: AS078 **1 Publications**

Basic Information

Observed MW

Calculated MW

Category

Secondary antibody

Applications

IF/ICC,FC

Cross-Reactivity

Background

Secondary antibodies are affinity-purified antibodies which will work with target-specific primary antibody in the detection, sorting or purification of its specified target. Secondary antibodies offer increased versatility enabling users to use many detection systems (e.g. HRP, AP, fluorescence). They can also provide greater sensitivity through signal amplification as multiple secondary antibodies. Most commonly, secondary antibodies are generated by immunizing the host animal (different from host species of primary antibody) with a pooled population of normal immunoglobulins from the host species of primary antibody and can be further purified and modified (i.e. antibody fragmentation, label conjugation, etc.) to ensure well-characterized specificity to corresponding normal immunoglobulins.

Recommended Dilutions

IF/ICC	1:100 - 1:800
FC	1:100 - 1:800

Immunogen Information

Gene ID	Swiss Prot
---------	------------

Immunogen

Mouse IgG

Synonyms

Contact

 | www.abclonal.com

Product Information

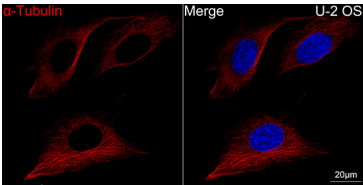
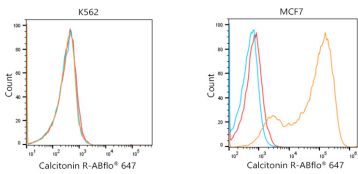
Source	Isotype	Purification
Goat	IgG	Affinity purification

Storage

Store at -20°C. Avoid freeze / thaw cycles.

Buffer: PBS with 0.025% Sodium Azide,0.75% BSA,50% glycerol,pH7.3.

Validation Data



Flow cytometric analysis of Positive antibody Human Calcitonin R (2.5 μ g/mL) in various cells (orange) compare to Rabbit isotype control (blue) and non-staining control (Red). The secondary antibody used was ABflo® 647-conjugated AffiniPure Goat Anti-Mouse IgG (H+L)(AS078) at 1:100.

Confocal imaging of U-2 OS cells using α -Tubulin Mouse mAb (AC012, dilution 1:400) followed by a further incubation with ABflo® 647-conjugated Goat Anti-Mouse IgG (H+L)(AS078, dilution 1:200) (Red). DAPI was used for nuclear staining (Blue). Objective: 100x.