

Recombinant Mouse Ep-CAM/TROP-1/CD326 Protein

Catalog No.: RP00798 **Recombinant**

Sequence Information

Species	Gene ID	Swiss Prot
Mouse	17075	Q99JW5

Tags

C-Fc

Synonyms

17-1A; 323/A3; ACSTD1;CD326;EGP-2;
EGP314; EGP40; EpCAM; MOC31;
TACST-1; TACSTD1;TROP1

Product Information

Source	Purification
HEK293 cells	> 95% by SDS-PAGE.

Endotoxin

< 1 EU/μg of the protein by LAL method.

Formulation

Lyophilized from a 0.2 μm filtered solution of PBS, pH7.4. Contact us for customized product form or formulation.

Reconstitution

Reconstitute to a concentration of 0.1-0.5 mg/mL in sterile distilled water.

Background

Epithelial Cellular Adhesion Molecule (Ep-CAM), also known as EGP314, mEGP314, Protein 289A, Tumor-associated calcium signal transducer 1, CD326, belongs to the EPCAM family. Its ' monomer subunit structure interacts with phosphorylated CLDN7. Ep-CAM may act as a physical homophilic interaction molecule between intestinal epithelial cells (IECs) and intraepithelial lymphocytes (IELs) at the mucosal epithelium for providing immunological barrier as a first line of defense against mucosal infection. It plays a role in embryonic stem cell proliferation and differentiation. It also up-regulates the expression of FABP5, MYC and cyclins A and E. The post-translational modification glycosylation at Asn-198 is crucial for protein stability.

Basic Information

Description

Recombinant Mouse EpCAM/TROP1/CD326/Epithelial cell adhesion molecule/Tumor-associated calcium signal transducer 1 Protein is produced by Human Cells expression system. The target protein is expressed with sequence (Gln24-Thr266) of mouse EpCAM/TROP1/CD326/Epithelial cell adhesion molecule/Tumor-associated calcium signal transducer 1 (Accession #Q99JW5) fused with an Fc tag at the C-terminus.

Bio-Activity

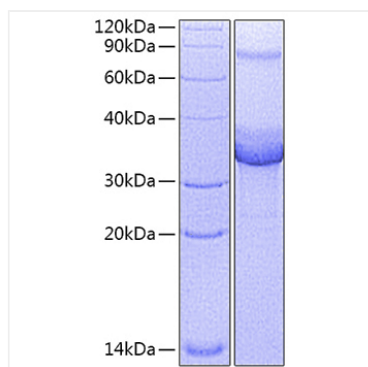
Storage

Store the lyophilized protein at -20°C to -80 °C for long term. After reconstitution, the protein solution is stable at -20 °C for 3 months, at 2-8 °C for up to 1 week. Avoid repeated freeze/thaw cycles.

Contact

 | www.abclonal.com

Validation Data



Recombinant Mouse Ep-CAM/TROP-1/CD326 Protein was determined by SDS-PAGE under reducing conditions with Coomassie Blue.