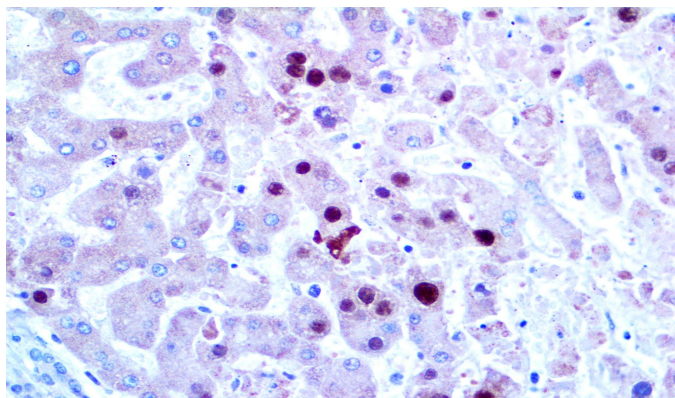


# Adenovirus Control Slides



*Inset: IHC of Adenovirus on a FFPE Liver Tissue*

## Intended Use

For In Vitro Diagnostic Use.

## Summary and Explanation

Adenoviruses belong to the family Adenoviridae. They infect both humans and animals. Adenovirus was first isolated in human adenoids (tonsils), from which the name is derived. Adenoviruses are classified as group I under the Baltimore classification scheme. They are medium-sized (60-90 nm), non-enveloped icosahedral viruses containing double-stranded DNA.

## Presentation

Five slides of Adenovirus positive tissues, each mounted on Hydrophilic Plus Slides, provided in a plastic mailer.

| <i>Catalog No.</i> | <i>Quantity</i> |
|--------------------|-----------------|
| BSB-5042           | 5 slides        |

**Storage:** Store at 20-25°C

## Precautions

1. For professional users only. Results should be interpreted by a qualified medical professional.
2. Ensure proper handling procedures are used with reagent.
3. Always wear personal protective equipment such as laboratory coat, goggles, and gloves when handling reagents.
4. Dispose of unused material according to local and federal regulations.
5. Follow safety precautions of the heating device used for epitope retrieval (TintoRetriever Pressure Cooker or similar).
6. For additional safety information refer to Safety Data Sheet for this product.
7. For complete recommendations for handling biological specimens please refer to the CDC document, "Guidelines for Safe Work Practices in Human and Animal Medical Diagnostic Laboratories" (see References in this document).

## Stability

**This product is stable up to the expiration date on the product label.**

Do not use the after expiration date listed on the package label.

Temperature fluctuations should be avoided. Store appropriately when not in use and avoid prolonged exposure to room temperature conditions.

## Staining Procedure

1. Subject tissues to heat induced epitope retrieval (HIER) using a suitable retrieval solution such as ImmunoDNA Retriever with Citrate (BSB 0020-BSB 0023), or ImmunoDNA Retriever EDTA (BSB 0030-BSB 0033).

2. Any of three heating methods may be used:

### a. TintoRetriever Pressure Cooker or Equivalent

Place tissues/slides in a staining dish or coplin jar containing the ImmunoDNA Retriever with Citrate or EDTA, and place on trivet in the pressure cooker. Add 1-2 inches of distilled water to the pressure cooker and turn heat to high. Incubate for 15 minutes. Open and immediately transfer slides to room temperature.

### b. TintoRetriever PT Module or Water Bath Method

Place tissues/slides in a pre-warmed staining dish or coplin jar containing the ImmunoDNA Retriever with Citrate or EDTA at 95°-99° C. Incubate for 30-60 minutes.

### c. Conventional Steamer Method

Place tissues/slides in a pre-warmed staining dish or coplin jar containing the ImmunoDNA Retriever with Citrate or EDTA in a steamer, cover and steam for 30-60 minutes.

3. After heat treatment, transfer slides in ImmunoDNA Retriever with Citrate or EDTA to room temperature and let stand for 15-20 minutes.

4. For manual staining, perform antibody incubation at ambient temperature. For automated staining methods, perform antibody incubation according to instrument manufacturer's instructions.

5. Wash slides with ImmunoDNA washer or DI water.

6. Continue IHC staining protocol. Wash slides between each step with ImmunoDNA washer solution.

## Abbreviated Immunohistochemical Protocol

| Step                     | ImmunoDetector AP/HRP | PolyDetector AP/HRP | PolyDetector Plus HRP |
|--------------------------|-----------------------|---------------------|-----------------------|
| Peroxidase/AP Blocker    | 5 min.                | 5 min.              | 5 min                 |
| Primary Antibody         | 30-60 min.            | 30-60 min.          | 30-60 min.            |
| 1st Step Detection       | 10 min.               | 30-45 min.          | 15 min.               |
| 2nd Step Detection       | 10 min.               | Not Applicable      | 15 min.               |
| Substrate- Chromogen     | 5-10 min.             | 5-10 min.           | 5-10 min.             |
| Counterstain / Coverslip | Varies                | Varies              | Varies                |

## Mounting Protocols

For detailed instructions using biodegradable permanent mounting media such as XyGreen PermaMounter (BSB 0169-0174) or organic solvent based resin such as PermaMounter (BSB 0094-0097), refer to PI0174 or PI0097.









### Product Limitations

Due to inherent variability present in immunohistochemical procedures (including fixation time of tissues, dilution factor of antibody, retrieval method utilized, and incubation time), optimal performance should be established through the use of positive and negative controls. Results should be interpreted by a qualified medical professional.

### References

1. U.S. Department of Health and Human Services: Centers for Disease Control and Prevention. Guidelines for Safe Work Practices in Human and Animal Medical Diagnostic Laboratories. Supplement / Vol. 61, January 6, 2012.

### Symbol Key / Légende des symboles/Erläuterung der Symbole

|   |  |   |   |   |
|---|--|---|---|---|
|  | EMERGO EUROPE<br>Prinsessegracht 20<br>2514 AP The Hague<br>The Netherlands                              |  Storage Temperature<br>Limites de température<br>Zulässiger Temperaturbereich                           |  Manufacturer<br>Fabricant<br>Hersteller              |  Catalog Number<br>Référence du catalogue<br>Bestellnummer |
|  | In Vitro Diagnostic Medical Device<br>Dispositif médical de diagnostic in vitro<br>In-Vitro-Diagnostikum |  Read Instructions for Use<br>Consulter les instructions<br>d'utilisation<br>Gebrauchsanweisung beachten |  Expiration Date<br>Utiliser jusqu'à<br>Verwendbar bis |  Lot Number<br>Code du lot<br>Chargenbezeichnung           |