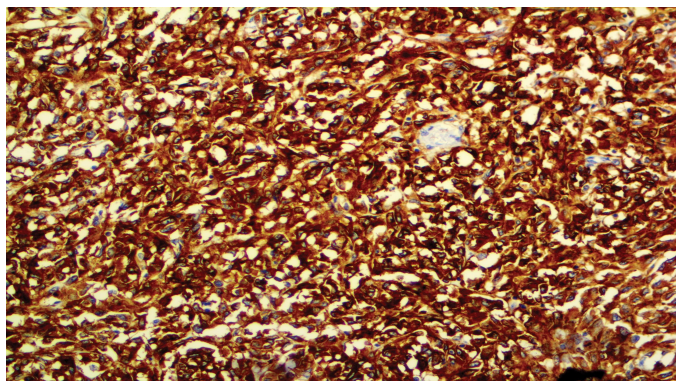


# CD117

**Clone:** EP10  
Rabbit Monoclonal



*Inset: IHC of CD117 on a FFPE Gastrointestinal Stromal Tumor Tissue*

## Intended Use

For In Vitro Diagnostic Use.

This antibody is intended for use in Immunohistochemical applications on formalin-fixed paraffin-embedded tissues (FFPE), frozen tissue sections, and cell preparations. Interpretation of results should be performed by a qualified medical professional.

\* The CD117 antibody, clone EP10, has been manufactured using Epitomics RabMab® technology covered under Patent No.s 5,675,063 and 7,402,409.

## Immunogen

Synthetic peptide corresponding to residues in the C-terminus of human CD117 protein.

## Summary and Explanation

CD117 is a tyrosine-kinase receptor for stem cell factor (SCF), also known as "steel factor" or "c-kit ligand". C-kit is a polypeptide that activates bone marrow precursors of a number of blood cells, but its receptor is also present in other cells. C-kit mutations in the interstitial cells of Cajal in the digestive tract are probably the key to Gastrointestinal Stromal Tumors (GISTs), and explain the efficacy of imatinib in the management of these rare malignancies.

CD117 is found on interstitial cells of Cajal, germ cells, bone marrow stem cells, melanocytes, breast epithelium and mast cells. This receptor is found on a wide variety of tumor cells (Follicular and Papillary Carcinoma of the Thyroid, Adenocarcinomas from endometrium, lung, ovary, pancreas, breast; Malignant Melanoma, Endodermal Sinus Tumor, Small-cell Carcinoma) but has been particularly useful in differentiating Gastrointestinal Stromal Tumors (GIST) from Kaposi's Sarcoma and tumors of smooth-muscle origin.

Antibody Type	Rabbit Monoclonal	Clone	EP10
Isotype	IgG	Reactivity	Paraffin, Frozen
Localization	Cytoplasmic, Membranous	Species Reactivity	Human, Monkey, Predicted: Marmoset
Control	Skin, Testis, Breast, GIST, Colon, Brain, Tonsil		

Application	Gastrointestinal Stromal Tumor, Cervical Cancer, Colon & Gastrointestinal Cancer, Germ Cell Tumor, Head & Neck Cancer, Kidney & Urothelial Cancer, Leukemia & Histiocytic, Sarcoma & Soft Tissue, Thyroid & Parathyroid Cancer, Undifferentiated Tumor
-------------	--

## Presentation

Anti-CD117 is a rabbit monoclonal antibody derived from cell culture supernatant that is concentrated, dialyzed, filter sterilized and diluted in buffer pH 7.5, containing BSA and sodium azide as a preservative.

Catalog No.	Presentation	Dilution	Volume
BSB 5316	Predilute	Ready-to-Use	3.0 mL
BSB 5317	Predilute	Ready-to-Use	7.0 mL
BSB 5318	Predilute	Ready-to-Use	15.0 mL
BSB 5319	Concentrate	1:100-1:500	0.1 mL
BSB 5320	Concentrate	1:100-1:500	0.5 mL
BSB 5321	Concentrate	1:100-1:500	1.0 mL

## Control Slides Available

Catalog No.	Quantity
BSB-9061-CS	5 slides

**Storage** Store at 2-8°C (Control Slides: Store at 20-25°C)

## Precautions

1. For professional users only. Results should be interpreted by a qualified medical professional.
2. This product contains <0.1% sodium azide (NaN<sub>3</sub>) as a preservative. Ensure proper handling procedures are used with this reagent.
3. Always wear personal protective equipment such as a laboratory coat, goggles, and gloves when handling reagents.
4. Dispose of unused solution with copious amounts of water.
5. Do not ingest reagent. If reagent is ingested, seek medical advice immediately.
6. Avoid contact with eyes. If contact occurs, flush with large quantities of water.
7. Follow safety precautions of the heating device used for epitope retrieval (TintoRetriever Pressure Cooker or similar).
8. For additional safety information refer to Safety Data Sheet for this product.
9. For complete recommendations for handling biological specimens, please refer to the CDC document, "Guidelines for Safe Work Practices in Human and Animal Medical Diagnostic Laboratories" (see References in this document).

## Stability

**This product is stable up to the expiration date on the product label.**

Do not use after expiration date listed on the package label. Temperature fluctuations should be avoided. Store appropriately when not in use and avoid prolonged exposure to room temperature conditions.

## Specimen Preparation

**Paraffin sections:** The antibody can be used on formalin-fixed paraffin-embedded (FFPE) tissue sections. Ensure tissue undergoes appropriate fixation for best results. Pre-treatment of tissues with

heat-induced epitope retrieval (HIER) is recommended using Bio SB ImmunoDNA Retriever with Citrate (BSB 0020-BSB 0023), ImmunoDNA Retriever with EDTA (BSB 0030-BSB 0033), or ImmunoDNA Digestor (BSB 0108-0112). See reverse side for complete protocol. Tissue should remain hydrated via use of Bio SB Immuno/DNA Washer solutions (BSB 0029 & BSB 0042).

**Frozen sections and cell preparations:** The antibody can be used on acetone-fixed frozen sections and acetone-fixed cell preparations.

#### IHC Protocol

1. Cut and mount 3-5 micron formalin-fixed paraffin-embedded tissues on positively charged slides such as Bio SB Hydrophilic Plus Slides (BSB 7028).
2. Air dry for 2 hours at 58° C.
3. Deparaffinize, dehydrate, and rehydrate tissues.
4. Subject tissues to heat induced epitope retrieval (HIER) using a suitable retrieval solution such as ImmunoDNA Retriever with Citrate (BSB 0020-BSB 0023) or EDTA (BSB 0030-BSB 0033).
5. Any of three heating methods may be used:

##### a. TintoRetriever Pressure Cooker or Equivalent

Place tissues/slides in a staining dish or coplin jar containing the ImmunoDNA Retriever with Citrate or EDTA and place on trivet in the pressure cooker. Add 1-2 inches of distilled water to the pressure cooker and turn heat to high. Incubate for 15 minutes. Open and immediately transfer slides to room temperature.

##### b. TintoRetriever PT Module or Water Bath Method

Place tissues/slides in a pre-warmed staining dish or coplin jar containing the ImmunoDNA Retriever with Citrate or EDTA at 95°-99° C. Incubate for 30-60 minutes.

##### c. Conventional Steamer Method

Place tissues/slides in a pre-warmed staining dish or coplin jar containing the ImmunoDNA Retriever with Citrate or EDTA in a steamer, cover and steam for 30-60 minutes.

6. After heat treatment, transfer slides in ImmunoDNA Retriever with Citrate or EDTA to room temperature and let stand for 15-20 minutes.
7. For manual IHC, perform antibody incubation at ambient temperature. For automated IHC methods, perform antibody incubation according to instrument manufacturer's instructions.
8. Wash slides with ImmunoDNA washer or DI water.
9. Continue IHC protocol. Wash slides between each step with ImmunoDNA washer solution.

#### Abbreviated Immunohistochemical Protocol

Step	ImmunoDetector AP/HRP	PolyDetector AP/HRP	PolyDetector Plus HRP
Peroxidase/AP Blocker	5 min.	5 min.	5 min
Primary Antibody	30-60 min.	30-60 min.	30-60 min.
1st Step Detection	10 min.	30-45 min.	15 min.
2nd Step Detection	10 min.	Not Applicable	15 min.
Substrate- Chromogen	5-10 min.	5-10 min.	5-10 min.
Counterstain/Coverslip	Varies	Varies	Varies

#### Mounting Protocols

For detailed instructions using biodegradable permanent mounting media such as XyGreen PermaMounter (BSB 0169-0174) or organic solvent based resin such as PermaMounter (BSB 0094-0097), refer to PI0174 or PI0097.





#### Product Limitations

Due to inherent variability present in immunohistochemical procedures (including fixation time of tissues, dilution factor of antibody, retrieval method utilized, and incubation time), optimal performance should be established through the use of positive and negative controls. Results should be interpreted by a qualified medical professional.

#### References

1. Sircar K, et al. AM J Surg Pathol. 1999;23(4):377-389
2. Miettinen M, et al. Am J Surg Pathol. 2000;24(2):211-222
3. Arber DA, Tamayo R, Weiss LM, Hum Pathol. 1998May;29(5):498-504
4. U.S. Department of Health and Human Services: Centers for Disease Control and Prevention. Guidelines for Safe Work Practices in Human and Animal Medical Diagnostic Laboratories. Supplement/Vol. 61, January 6, 2012.  
<https://www.cdc.gov/mmwr/pdf/other/su6101.pdf>

#### Symbol Key/Légende des symboles/Erläuterung der Symbole

<b>EC</b> <b>REP</b>	QAdvis EAR AB Ideon Science Park Scheelevägen 17 SE-223 70 Lund, Sweden	 Storage Temperature Limites de température Zulässiger Temperaturbereich	 Manufacturer Fabricant Hersteller	<b>REF</b>	Catalog Number Référence du catalogue Bestellnummer
<b>IVD</b>	In Vitro Diagnostic Medical Device Dispositif médical de diagnostic in vitro In-Vitro-Diagnostikum	 Read Instructions for Use Consulter les instructions d'utilisation Gebrauchsanweisung beachten	 Expiration Date Utiliser jusque Verwendbar bis	<b>LOT</b>	Lot Number Code du lot Chargenbezeichnung