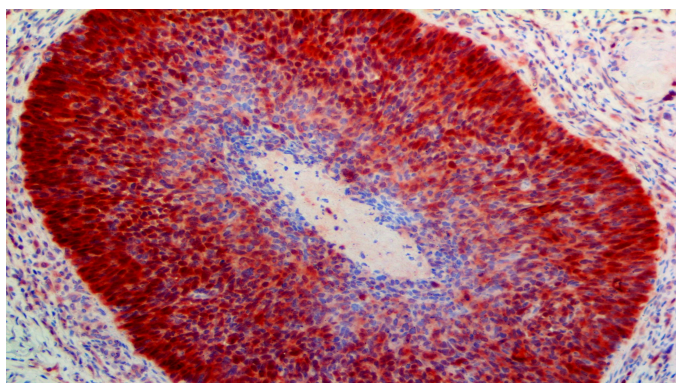


# CDK4

Clone: EP180

Rabbit Monoclonal



*Inset: IHC of CDK4 on a FFPE Anal Carcinoma Tissue*

## Intended Use

For In Vitro Diagnostic Use.

This antibody is intended for use in Immunohistochemical applications on formalin-fixed paraffin-embedded tissues (FFPE), frozen tissue sections and cell preparations. Interpretation of results should be performed by a qualified medical professional.

## Immunogen

A synthetic peptide corresponding to human CDK4 protein.

## Summary and Explanation

Cyclin-dependent kinase 4 (CDK4) is a member of the Ser/Thr protein kinase family. It is a catalytic subunit of the protein kinase complex that is important for cell cycle G1 phase progression. The activity of this kinase is restricted to the G1-S phase, which is controlled by the regulatory subunits D-type cyclins and CDK inhibitor p16 (INK4a).

Overexpression of CDK4 has been observed in many tumor types, including oral squamous cell carcinoma and cancers of the pancreatic (endocrine tumors), lung, breast and colon. The expression of CDK4 is associated with tumor progression.

Binh et al. reported a high expression of CDK4 (92%) in atypical lipomatous tumor, well-differentiated liposarcomas (ALT-WDLPS) and dedifferentiated liposarcomas (DDLPS). CDK4 is useful in differentiating ALT-WDLPS from benign adipose tumors and to separate DDLPS from poorly differentiated sarcomas.

Antibody Type	Rabbit Monoclonal	Clone	EP180
Isotype	IgG	Reactivity	Paraffin, Frozen
Localization	Nuclear	Species Reactivity	Human
Control	Skin, Colon Carcinoma, Liposarcoma		
Application	Breast Cancer, Sarcoma & Soft Tissue		

## Presentation

Anti-CDK4 is a Rabbit Monoclonal antibody derived from cell culture supernatant that is concentrated, dialyzed, filter sterilized and diluted in buffer pH 7.5, containing BSA and sodium azide as a preservative.

Catalog No.	Presentation	Dilution	Volume
BSB 2461	Predilute	Ready-to-Use	3.0 mL
BSB 2462	Predilute	Ready-to-Use	7.0 mL
BSB 2463	Predilute	Ready-to-Use	15.0 mL
BSB 2464	Concentrate	1:25-1:100	0.1 mL
BSB 2465	Concentrate	1:25-1:100	0.5 mL
BSB 2466	Concentrate	1:25-1:100	1.0 mL

## Control Slides Available

Catalog No.	Quantity
BSB-9115-CS	5 slides

**Storage** Store at 2-8°C (Control Slides: Store at 20-25°C)

## Precautions

1. For professional users only. Results should be interpreted by a qualified medical professional.
2. This product contains <0.1% sodium azide (NaN<sub>3</sub>) as a preservative. Ensure proper handling procedures are used with this reagent.
3. Always wear personal protective equipment such as a laboratory coat, goggles, and gloves when handling reagents.
4. Dispose of unused solution with copious amounts of water.
5. Do not ingest reagent. If reagent is ingested, seek medical advice immediately.
6. Avoid contact with eyes. If contact occurs, flush with large quantities of water.
7. Follow safety precautions of the heating device used for epitope retrieval (TintoRetriever Pressure Cooker or similar).
8. For additional safety information refer to Safety Data Sheet for this product.
9. For complete recommendations for handling biological specimens, please refer to the CDC document, "Guidelines for Safe Work Practices in Human and Animal Medical Diagnostic Laboratories" (see References in this document).

## Stability

**This product is stable up to the expiration date on the product label.**

Do not use after expiration date listed on package label. Temperature fluctuations should be avoided. Store appropriately when not in use and avoid prolonged exposure to room temperature conditions.

## Specimen Preparation

**Paraffin sections:** The antibody can be used on formalin-fixed paraffin-embedded (FFPE) tissue sections. Ensure tissue undergoes appropriate fixation for best results. Pre-treatment of tissues with heat-induced epitope retrieval (HIER) is recommended using Bio SB ImmunoDNA Retriever with Citrate (BSB 0020-BSB 0023), ImmunoDNA Retriever with EDTA (BSB 0030-BSB 0033), or ImmunoDNA Digestor (BSB 0108-0112). See reverse side for complete protocol. Tissue should remain hydrated via use of Bio SB Immuno/DNA Washer solutions (BSB 0029 & BSB 0042).

**Frozen sections and cell preparations:** The antibody can be used on acetone-fixed frozen sections and acetone-fixed cell preparations.

## IHC Protocol

1. Cut and mount 3-5 micron formalin-fixed paraffin-embedded tissues on positively charged slides such as Bio SB Hydrophilic Plus Slides (BSB 7028).
2. Air dry for 2 hours at 58° C.
3. Deparaffinize, dehydrate, and rehydrate tissues.
4. Subject tissues to heat induced epitope retrieval (HIER) using a suitable retrieval solution such as ImmunoDNA Retriever with Citrate (BSB 0020-BSB 0023) or EDTA (BSB 0030-BSB 0033).
5. Any of three heating methods may be used:

### a. TintoRetriever Pressure Cooker or Equivalent

Place tissues/slides in a staining dish or coplin jar containing the ImmunoDNA Retriever with Citrate or EDTA and place on trivet in the pressure cooker. Add 1-2 inches of distilled water to the pressure cooker and turn heat to high. Incubate for 15 minutes. Open and immediately transfer slides to room temperature.

### b. TintoRetriever PT Module or Water Bath Method

Place tissues/slides in a pre-warmed staining dish or coplin jar containing the ImmunoDNA Retriever with Citrate or EDTA at 95°-99° C. Incubate for 30-60 minutes.

### c. Conventional Steamer Method

- Place tissues/slides in a pre-warmed staining dish or coplin jar containing the ImmunoDNA Retriever with Citrate or EDTA in a steamer, cover and steam for 30-60 minutes.
6. After heat treatment, transfer slides in ImmunoDNA Retriever with Citrate or EDTA to room temperature and let stand for 15-20 minutes.
  7. For manual IHC, perform antibody incubation at ambient temperature. For automated IHC methods, perform antibody incubation according to instrument manufacturer's instructions.
  8. Wash slides with ImmunoDNA washer or DI water.
  9. Continue IHC protocol. Wash slides between each step with ImmunoDNA washer solution.

## Mounting Protocols

For detailed instructions using biodegradable permanent mounting media such as XyGreen PermaMounter (BSB 0169-0174) or organic solvent based resin such as PermaMounter (BSB 0094-0097), refer to PI0174 or PI0097.

## Product Limitations

Due to inherent variability present in immunohistochemical procedures (including fixation time of tissues, dilution factor of antibody, retrieval method utilized, and incubation time), optimal performance should be established through the use of positive and negative controls. Results should be interpreted by a qualified medical professional.









## References

1. Harbour JW, et al.: Cell 1999, 98:859-869
2. Wikman H, et al.: Genes Chromosomes Cancer 2005, 42:193-199
3. Poomsawat S, et al.: J Oral Pathol Med 2010, 39:793-799
4. Lindberg D, et al.: Neuroendocrinology 2007, 86:112-118
5. Wu A, et al.: J Transl Med 2011, 9:38
6. An HX, et al.: Am J Pathol 1999, 154:113-118
7. Zhao P, et al.: World J Gastroenterol 2003, 9:2202-2206
8. Binh MB, et al.: Am J Surg Pathol 2005, 29:1340-1347
9. U.S. Department of Health and Human Services: Centers for Disease Control and Prevention. Guidelines for Safe Work Practices in Human and Animal Medical Diagnostic Laboratories. Supplement / Vol. 61, January 6, 2012.  
<https://www.cdc.gov/mmwr/pdf/other/su6101.pdf>

## Abbreviated Immunohistochemical Protocol

Step	ImmunoDetector AP/HRP	PolyDetector AP/HRP	PolyDetector Plus HRP
Peroxidase/AP Blocker	5 min.	5 min.	5 min
Primary Antibody	30-60 min.	30-60 min.	30-60 min.
1st Step Detection	10 min.	30-45 min.	15 min.
2nd Step Detection	10 min.	Not Applicable	15 min.
Substrate- Chromogen	5-10 min.	5-10 min.	5-10 min.
Counterstain / Coverslip	Varies	Varies	Varies

## Symbol Key / Légende des symboles/Erläuterung der Symbole

 QAdvis EAR AB Ideon Science Park Scheelevägen 17 SE-223 70 Lund, Sweden	 Storage Temperature Limites de température Zulässiger Temperaturbereich	 Manufacturer Fabricant Hersteller	 Catalog Number Référence du catalogue Bestellnummer
 In Vitro Diagnostic Medical Device Dispositif médical de diagnostic in vitro In-Vitro-Diagnostikum	 Read Instructions for Use Consulter les instructions d'utilisation Gebrauchsanweisung beachten	 Expiration Date Utiliser jusque Verwendbar bis	 Lot Number Code du lot Chargenbezeichnung