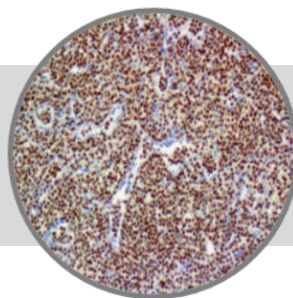


T-bet/TBX-2, RMab**Clone: EP263****Rabbit Monoclonal**
Bio SB
 BIOSCIENCE FOR THE WORLD

www.biosb.com

*Inset: IHC of T-bet on a FFPE Hairy Cell Leukemia Tissue***Intended Use**

For In Vitro Diagnostic Use.

This antibody is intended for use in Immunohistochemical applications on formalin-fixed paraffin-embedded tissues (FFPE), frozen tissue sections and cell preparations. Interpretation of results should be performed by a qualified medical professional.

* The T-bet/TBX-2 antibody, clone EP263, has been manufactured using Epitomics RabMab® technology covered under Patent No.'s 5,675,063 and 7,402,409.

Immunogen

Synthetic peptide corresponding to residues of human TBX21 protein.

Summary and Explanation

T-box transcription factor TBX21, also known as T-bet, is a T-box transcription factor, is expressed in CD4+ T-lymphocytes committed to T-helper (Th)1 T-cell development from naïve T-helper precursor cells (Thp) and redirects Th2 T cells to Th1 development.

T-bet is expressed in CD4+ T lymphocytes in normal tissues. In lymphoid malignancies, TBX21 has been found in a subset of T-cell lymphomas with Th1 T cell differentiation, a subset of B-cell or T cells, non-Hodgkin's lymphomas, majority of Hodgkin's lymphomas and precursor B-cell lymphoblastic leukemia/lymphoblastic lymphomas. However, B-cell neoplasms derived from pregerminal center or germinal center B-cells, including mantle cell lymphoma, follicular lymphoma, diffuse large B-cell lymphoma, and Burkitt lymphoma are negative for T-bet. Therefore, anti-T-bet should serve as a useful marker for the diagnosis and subtyping of B-cell and T-cell lymphoproliferative disorders. T-bet is a useful marker for Hodgkin's lymphoma and also helpful in identification of hairy cell leukemia.

Antibody Type	Rabbit Monoclonal	Clone	EP263
Isotype	IgG	Reactivity	Paraffin, Frozen
Localization	Nuclear	Control	Spleen, Tonsil, Cervix, Lymphoblastic Lymphoma, Hairy Cell Leukemia, Bladder TCC
Species Reactivity		Human	

Presentation

T-bet/TBX-2 is a rabbit monoclonal antibody derived from cell culture supernatant that is concentrated, dialyzed, filter sterilized and diluted in buffer pH 7.5, containing BSA and sodium azide as a preservative.

Catalog No.	Antibody Type	Dilution	Volume/Qty
BSB 2601	Tinto Prediluted	Ready-to-Use	3.0 mL
BSB 2602	Tinto Prediluted	Ready-to-Use	7.0 mL
BSB 2603	Tinto Prediluted	Ready-to-Use	15.0 mL
BSB 2604	Concentrated	1:25 - 1:100	0.1 mL
BSB 2605	Concentrated	1:25 - 1:100	0.5 mL
BSB 2606	Concentrated	1:25 - 1:100	1.0 mL

Control Slides Available

Catalog No.	Quantity
BSB 2607	5 slides

Storage Store at 2-8°C (Control Slides: Store at 20-25°C)

Precautions

1. For professional users only. Results should be interpreted by a qualified medical professional.
2. This product contains <0.1% sodium azide (NaN₃) as a preservative. Ensure proper handling procedures are used with this reagent.
3. Always wear personal protective equipment such as laboratory coat, goggles and gloves when handling reagents.
4. Dispose of unused solution with copious amount of water.
5. Do not ingest reagent. If reagent is ingested, seek medical advice immediately.
6. Avoid contact with eyes. If contact occurs, flush with large quantities of water.
7. Follow safety precautions of the heating device used for epitope retrieval (TintoRetriever Pressure Cooker or similar).
8. For additional safety information refer to Safety Data Sheet for this product.
9. For complete recommendations for handling biological specimens, please refer to the CDC document, "Guidelines for Safe Work Practices in Human and Animal Medical Diagnostic Laboratories" (see References in this document).

Stability

This product is stable up to the expiration date on the product label. Do not use after expiration date listed on package label. Temperature fluctuations should be avoided. Store appropriately when not in use, and avoid prolonged exposure to room temperature conditions.

Specimen Preparation

Paraffin sections: The antibody can be used on formalin-fixed paraffin-embedded (FFPE) tissue sections. Ensure tissue undergoes appropriate fixation for best results. Pre-treatment of tissues with heat-induced epitope retrieval (HIER) is recommended using Bio SB ImmunoDNA Retriever with Citrate (BSB 0020-BSB 0023), ImmunoDNA Retriever with EDTA (BSB 0030-BSB 0033) or ImmunoDNA Digestor (BSB 0108-0112). See reverse side for complete protocol. Tissue should remain hydrated via use of Bio SB Immuno/DNA Washer solutions (BSB 0029 & BSB 0042).

Frozen sections and cell preparations: The antibody can be used for labeling acetone-fixed frozen sections and acetone-fixed cell preparations.

Staining Procedure

1. Cut and mount 3-5 micron formalin-fixed paraffin-embedded tissues on positively charged slides such as Bio SB Hydrophilic Plus Slides (BSB 7028).
2. Air dry for 2 hours at 58° C.
3. Deparaffinize, dehydrate and rehydrate tissues.
4. Subject tissues to heat induced epitope retrieval (HIER) using a suitable retrieval solution such as ImmunoDNA Retriever with Citrate (BSB 0020-BSB 0023) or EDTA (BSB 0030-BSB 0033).
5. Any of three heating methods may be used:

a. TintoRetriever Pressure Cooker or Equivalent

Place tissues/slides in a staining dish or coplin jar containing the ImmunoDNA Retriever with Citrate or EDTA, and place on trivet in the pressure cooker. Add 1-2 inches of distilled water to the pressure cooker and turn heat to high. Incubate for 15 minutes. Open and immediately transfer slides to room temperature.

b. TintoRetriever PT Module or Water Bath Method

Place tissues/slides in a pre-warmed staining dish or coplin jar containing the ImmunoDNA Retriever with Citrate or EDTA at 95°-99° C. Incubate for 30-60 minutes.

c. Conventional Steamer Method

Place tissues/slides in a pre-warmed staining dish or coplin jar containing the ImmunoDNA Retriever with Citrate or EDTA in a steamer, cover and steam for 30-60 minutes.

6. After heat treatment, transfer slides in ImmunoDNA Retriever with Citrate or EDTA to room temperature and let stand for 15-20 minutes.
7. For manual staining, perform antibody incubation at ambient temperature. For automated staining methods, perform antibody incubation according to instrument manufacturer's instructions.
8. Wash slides with ImmunoDNA washer or DI water.
9. Continue IHC staining protocol. Wash slides between each step with ImmunoDNA washer solution.

Mounting Protocols

For detailed instructions using biodegradable permanent mounting media such as XyGreen PermaMounter (BSB 0169-0174) or organic solvent based resin such as PermaMounter (BSB 0094-0097), refer to PI0174 or PI0097.

Abbreviated Immunohistochemical Protocol

Step	ImmunoDetector AP/HRP	PolyDetector AP/HRP	PolyDetector Plus HRP
Peroxidase/AP Blocker	5 min.	5 min.	5 min
Primary Antibody	30-60 min.	30-60 min.	30-60 min.
1st Step Detection	10 min.	30-45 min.	15 min.
2nd Step Detection	10 min.	Not Applicable	15 min.
Substrate-Chromogen	5-10 min.	5-10 min.	5-10 min.
Counterstain / Coverslip	Varies	Varies	Varies

Product Limitations

Normal Tissues	
Positive (+)	
Spleen	10/10 (100%)
Tonsil	9/10 (90%)
Negative (-)	
Breast	0/5 (0%)
Kidney	0/5 (0%)
Prostate	0/5 (0%)
Placenta	0/5 (0%)
Abnormal Tissues	
Positive (+)	
Hairy Cell Leukemia	7/7 (100%)
Hodgkin's Lymphoma	4/5 (80%)
Negative (-)	
Melanoma	0/6 (0%)
Colon Adenocarcinoma	0/6 (0%)
Burkitt's Lymphoma	0/6 (0%)

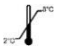



Product Limitations

Due to inherent variability present in immunohistochemical procedures (including fixation time of tissues, dilution factor of antibody, retrieval method utilized and incubation time), optimal performance should be established through the use of positive and negative controls. Results should be interpreted by a qualified medical professional.

References

1. Szabo SJ, et al. Cell. 2000; 100(6):665-9
2. Zhang WX, et al. Genomics. 2001; 70(1):41-8
3. Harashima A, et al. Leuk Res. 2005 Jul; 29(7):841-8
4. Marafioti T, et al. Am J Pathol. 2003; 162:861-71
5. U.S. Department of Health and Human Services: Centers for Disease Control and Prevention. Guidelines for Safe Work Practices in Human and Animal Medical Diagnostic Laboratories. Supplement / Vol. 61, January 6, 2012.

Symbol Key / Légende des symboles/Erläuterung der Symbole

EC REP	EMERGO EUROPE Prinsessegracht 20 2514 AP The Hague The Netherlands		Storage Temperature Limites de température Zulässiger Temperaturbereich		Manufacturer Fabricant Hersteller	REF	Catalog Number Référence du catalogue Bestellnummer
IVD	In Vitro Diagnostic Medical Device Dispositif médical de diagnostic in vitro In-Vitro-Diagnostikum		Read Instructions for Use Consulter les instructions d'utilisation Gebrauchsanweisung beachten		Expiration Date Utiliser jusque Verwendbar bis	LOT	Lot Number Code du lot Chargenbezeichnung

Bio SB
BIOSCIENCE FOR THE WORLD



69 Santa Felicia Dr., Santa Barbara, CA 93117, USA
Tel. (805) 692-2768 | Tel. (800) 561-1145 | Fax. (805) 692-2769
E-mail: sales@biosb.com | Website: www.biosb.com