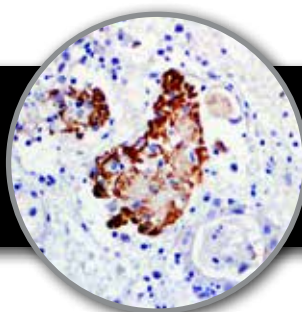


C3d**Clone: Polyclonal****Rabbit Polyclonal**

Bio SB
BIO SCIENCE FOR THE WORLD
www.biosb.com

Inset: IHC of C3d on a FFPE Rejected Kidney Transplant Tissue

Intended Use

For In Vitro Diagnostic Use.

This antibody is intended for use in Immunohistochemical applications on formalin-fixed paraffin-embedded tissues (FFPE), frozen tissue sections and cell preparations. Interpretation of results should be performed by a qualified medical professional.

Immunogen

Purified full length native protein corresponding to the human C7 protein.

Summary and Explanation

Complement component 3, or C3, is a protein of the immune system that plays a central role in the complement system and contributes to innate immunity. Its activation is required for both classical and alternative complement activation pathways. C3d deposition in the renal transplant PTCs (peritubular capillaries) is indicative of AR (acute rejection) with subsequent high probability of graft loss.

Anti-C3d combined with anti-C4d can be utilized as a tool for diagnosis of AR and warrant prompt and aggressive anti-rejection treatment. C3d is also a helpful adjunct in the diagnosis of bullous pemphigoid (BP) and perhaps pemphigus vulgaris (PV), especially in the cases in which only formalin-fixed, paraffin embedded tissue is available for analysis.

Antibody Type	Rabbit Polyclonal	Clone	Polyclonal
Isotype	IgG	Reactivity	Paraffin, Frozen
Localization	Cytoplasmic, Membranous	Control	Rejected Kidney Transplant
Species Reactivity	Human		

Presentation

C3d is a purified immunoglobulin fraction of rabbit antiserum that is filter sterilized and diluted in buffer pH 7.5, containing BSA and sodium azide as a preservative

Presentations

Catalog Num.	Antibody Type	Dilution	Volume/Qty
BSB 6387	Tinto Prediluted	Ready-to-Use	3.0 mL
BSB 6388	Tinto Prediluted	Ready-to-Use	7.0 mL
BSB 6389	Tinto Prediluted	Ready-to-Use	15.0 mL
BSB 6390	Concentrated	1:50 - 1:200	0.1 mL
BSB 6391	Concentrated	1:50 - 1:200	0.5 mL
BSB 6392	Concentrated	1:50 - 1:200	1.0 mL
BSB 6393	Control Slides	Not Applicable	5 slides

Precautions

1. For professional users only. Ensure results are interpreted by a medical professional.
2. This product contains sodium azide (NaN₃), a toxic chemical which may react with plumbing to form highly explosive build-ups of metal azides. Upon disposal, flush with large volumes of water to prevent sodium azide build-up.
3. Ensure proper handling procedures are used with reagent. Always wear proper laboratory equipment such as laboratory coat and gloves when handling reagents.
4. Unused solution should be disposed of according to local and federal regulations.
5. Do not ingest reagent. If reagent ingested, contact a poison control center immediately.
6. For complete recommendations for handling biological specimens please refer to the CDC document, "Guidelines for Safe Work Practices in Human and Animal Medical Diagnostic Laboratories" (5).

Storage

Store at 2-8 °C. Do not use after expiration date listed on package label. Temperature fluctuations should be avoided. Store appropriately when not in use, and avoid prolonged exposure to room temperature conditions.

Specimen Preparation

Paraffin sections: The antibody can be used on formalin-fixed paraffin-embedded (FFPE) tissue sections. Ensure tissue undergoes appropriate fixation to ensure best results. Pre-treatment of tissues with heat-induced epitope retrieval (HIER) is recommended using Bio SB ImmunoDNA Retriever with Citrate (BSB 0020-BSB 0023), ImmunoDNA Retriever with EDTA (BSB 0030-BSB 0033) or ImmunoDNA Digestor (BSB 0108-0112). See reverse side for complete protocol. Tissue should remain hydrated via use of Bio SB Immuno/DNA Washer solutions (BSB 0029 & BSB 0042).

Frozen sections and cell preparations: The antibody can be used for labeling acetone-fixed frozen sections and acetone-fixed cell preparations.

Staining Procedure

1. Cut and mount 3-5 micron formalin-fixed paraffin-embedded tissues on positive charged slides such as Bio SB Hydrophilic Plus Slides (BSB 7028).
2. Air dry for 2 hours at 58° C.
3. Deparaffinize, dehydrate and rehydrate tissues.
4. Subject tissues to heat epitope retrieval using a suitable retrieval solution such as ImmunoDNA Retriever with Citrate (BSB 0020-BSB 0023) or EDTA (BSB 0030-BSB 0033).
5. Any of three heating methods may be used:

a. TintoRetriever Pressure Cooker or Equivalent

Place tissues/slides in a staining dish or coplin jar containing the ImmunoDNA Retriever with Citrate or EDTA, and place in the pressure cooker. Add 1-2 inches of distilled water to the pressure cooker and turn heat to high. Incubate for 15 minutes. Open and immediately transfer slides to room temperature.

b. TintoRetriever PT Module or Water Bath Method

Place tissues/slides in a pre-warmed staining dish or coplin jar containing the ImmunoDNA Retriever with Citrate or EDTA at 95°-99° C. Incubate for 30-60 minutes.

c. Conventional Steamer Method

Place tissues/slides in a pre-warmed staining dish or coplin jar containing the ImmunoDNA Retriever with Citrate or EDTA in a Steamer, cover and steam for 30-60 minutes.

6. After heat treatment, transfer slides in ImmunoDNA Retriever with Citrate or EDTA to room temperature and let stand for 15-20 minutes.
7. For manual staining, perform antibody incubation at ambient temperature. For automated staining methods, perform antibody incubation according to instrument manufacturer's instructions.
8. Wash slides with IHC wash buffer or DI water.
9. Continue IHC staining protocol.

Recommended IHC Protocol

Step	ImmunoDetector AP/HRP	PolyDetector AP/HRP	PolyDetector Plus HRP
Peroxidase/AP Blocker	5 min.	5 min.	5 min
Primary Antibody	30-60 min.	30-60 min.	30-60 min.
1st Step Detection	10 min.	30-45 min.	15 min.
2nd Step Detection	10 min.	Not Applicable	15 min.
Substrate-Chromogen	5-10 min.	5-10 min.	5-10 min.
Counterstain	Varies	Varies	Varies

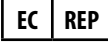
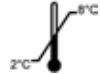






Product Limitations

Due to inherent variability present in immunohistochemical procedures (including fixation time of tissues, dilution factor of antibody, retrieval method utilized and incubation time), optimal performance should be established through the use of positive and negative controls. Results should be interpreted by a medical professional.

References

1. Bickerstaff A, et al. Am J Pathology. 2008 Aug; 173(2):347-57.
2. Kuypers D, et al. Transplantation. 2003 Jul 15; 76(1):102-8.
3. Pfaltz K, et al. J Cutan Pathol. 2009 Oct 15.
4. Eggersten G, et al. APMIS. 2001 Dec; 109(12):825-34
5. U.S. Department of Health and Human Services: Centers for Disease Control and Prevention. Guidelines for Safe Work Practices in Human and Animal Medical Diagnostic Laboratories. Supplement / Vol. 61, January 6, 2012.

Symbol Key / Légende des symboles/Erläuterung der Symbole

 <p>Emergo Europe Moenstraat 15 2513 BH The Hague, Netherlands</p>	 <p>Storage Temperature Limites de température Zulassiger temperaturbereich</p>	 <p>Manufacturer Fabricant Hersteller</p>	 <p>Catalog Number Référence du catalogue Bestellnummer</p>
 <p>In Vitro Diagnostic Medical Device Dispositif médical de diagnostic in vitro In-Vitro-Diagnostikum</p>	 <p>Read Instructions for Use Consulter les instructions d'utilisation Gebrauchsanweisung beachten</p>	 <p>Expiration Date Utiliser jusque Verwendbar bis</p>	 <p>Lot Number Code du lot Chargenbezeichnung</p>



69 Santa Felicia Dr., Santa Barbara, CA 93117, USA
Tel: (805) 692-2768 | Tel: (800) 561-1145 | Fax: (805) 692-2769
E-mail: info@biosb.com | Website: www.biosb.com