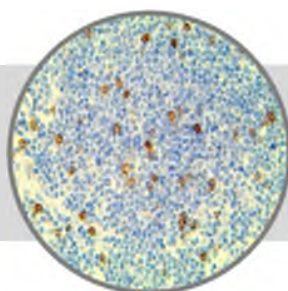


TCR Delta

Clone: BSB-127**Mouse Monoclonal****IVD****Bio SB**
BIOSCIENCE FOR THE WORLD

www.biosb.com

Inset: IHC of TCR Delta on a FFPE Thymus Tissue

Intended Use

For In Vitro Diagnostic Use.

This antibody is intended for use in Immunohistochemical applications on formalin-fixed paraffin-embedded tissues (FFPE), frozen tissue sections and cell preparations. Interpretation of results should be performed by a qualified medical professional.

Immunogen

Recombinant protein corresponding the human TCR delta protein.

Summary and Explanation

T cell receptor delta locus (symbol TRD), also known as TCRD, is a protein that in humans is encoded by the *TRD* gene. It contributes the delta (δ) chain to the larger TCR protein (T-cell receptor). The T cell receptor or TCR is a molecule found on the surface of T lymphocytes (or T cells) that is responsible for recognizing antigens bound to major histocompatibility complex (MHC) molecules. The TCR is composed of two different protein chains (that is, it is a heterodimer). In 95% of T cells, this consists of an alpha (α) and beta (β) chain, whereas in 5% of T cells this consists of gamma and delta (γ/δ) chains.

Deletions and mutations of the TRG and TRD gene have been implicated in a variety of cancers. Specifically, $\gamma\delta$ T cells may contribute to the immune response against several tumor types (lymphoma, myeloma, breast, colon, lung, ovary, and others). They act directly through mediation of cytotoxic activity and indirectly through the regulation of other cell types responsible for the anti-tumor response. The presence of $\gamma\delta$ T cells in the tumor microenvironment has been associated with poor prognosis in some cancers. While $\gamma\delta$ T cells have been implicated in T cell lymphomas, there is also a specific subtype known as $\gamma\delta$ T-cell lymphoma, characterized by the proliferation of those cells exclusively. This lymphoma can be quite aggressive with ulcerative plaques and subcutaneous nodules. In adenocarcinoma, polyclonal rearrangement of the TCR γ chain gene was significantly greater in N1 and N2 patients (using the TNM cancer staging system) than in N0 patients. Apart from carcinomas, TRG has also been correlated with hepatitis B virus (HBV). Specifically, V δ 2+ T cell levels and TCR $\gamma\delta$ T cell cytotoxicity were significantly lower in patients with chronic HBV infections.

Antibody Type	Mouse Monoclonal	Clone	BSB-127
Isotype	IgG1/K	Reactivity	Paraffin, Frozen
Localization	Cytoplasmic, Membranous	Control	Thymus, Tonsil, Lymph Node, Spleen
Species Reactivity		Human	

Presentation

TCR Gamma is a mouse monoclonal antibody derived from cell culture supernatant that is concentrated, dialyzed, filter sterilized and diluted in buffer pH 7.5, containing BSA and sodium azide as a preservative.

Catalog No.	Antibody Type	Dilution	Volume/Qty
BSB 3644	Tinto Prediluted	Ready-to-Use	3.0 mL
BSB 3645	Tinto Prediluted	Ready-to-Use	7.0 mL
BSB 3646	Tinto Prediluted	Ready-to-Use	15.0 mL
BSB 3647	Concentrated	1:10- 1:50	0.1 mL
BSB 3648	Concentrated	1:10- 1:50	0.5 mL
BSB 3649	Concentrated	1:10- 1:50	1.0 mL

Control Slides Available

Catalog No.	Quantity
BSB 3650	5 slides

Precautions

1. For professional users only. Results should be interpreted by a qualified medical professional.
2. This product contains <0.1% sodium azide (NaN₃) as a preservative. Ensure proper handling procedures are used with this reagent.
3. Always wear personal protective equipment such as laboratory coat, goggles and gloves when handling reagents.
4. Dispose of unused solution with copious amount of water.
5. Do not ingest reagent. If reagent is ingested, seek medical advice immediately.
6. Avoid contact with eyes. If contact occurs, flush with large quantities of water.
7. Follow safety precautions of the heating device used for epitope retrieval (TintoRetriever Pressure Cooker or similar).
8. For additional safety information refer to Safety Data Sheet for this product.
9. For complete recommendations for handling biological specimens, please refer to the CDC document, "Guidelines for Safe Work Practices in Human and Animal Medical Diagnostic Laboratories" (see References in this document).

Storage Store at 2-8°C (Control Slides: Store at 20-25°C)

Stability

This product is stable up to the expiration date on the product label. Do not use after expiration date listed on package label. Temperature fluctuations should be avoided. Store appropriately when not in use, and avoid prolonged exposure to room temperature conditions.

Specimen Preparation

Paraffin sections: The antibody can be used on formalin-fixed paraffin-embedded (FFPE) tissue sections. Ensure tissue undergoes appropriate fixation for best results. Pre-treatment of tissues with heat-induced epitope retrieval (HIER) is recommended using Bio SB ImmunoDNA Retriever with Citrate (BSB 0020-BSB 0023), ImmunoDNA Retriever with EDTA (BSB 0030-BSB 0033) or ImmunoDNA Digestor (BSB 0108-0112). See reverse side for complete protocol. Tissue should remain hydrated via use of Bio SB Immuno/DNA Washer solutions (BSB 0029 & BSB 0042).

Frozen sections and cell preparations: The antibody can be used for labeling acetone-fixed frozen sections and acetone-fixed cell preparations.

Staining Procedure

1. Cut and mount 3-5 micron formalin-fixed paraffin-embedded tissues on positively charged slides such as Bio SB Hydrophilic Plus Slides (BSB 7028).
2. Air dry for 2 hours at 58° C.
3. Deparaffinize, dehydrate and rehydrate tissues.
4. Subject tissues to heat induced epitope retrieval (HIER) using a suitable retrieval solution such as ImmunoDNA Retriever with Citrate (BSB 0020-BSB 0023) or EDTA (BSB 0030-BSB 0033).
5. Any of three heating methods may be used:

a. TintoRetriever Pressure Cooker or Equivalent

Place tissues/slides in a staining dish or coplin jar containing the ImmunoDNA Retriever with Citrate or EDTA, and place on trivet in the pressure cooker. Add 1-2 inches of distilled water to the pressure cooker and turn heat to high. Incubate for 15 minutes. Open and immediately transfer slides to room temperature.

b. TintoRetriever PT Module or Water Bath Method

Place tissues/slides in a pre-warmed staining dish or coplin jar containing the ImmunoDNA Retriever with Citrate or EDTA at 95°-99° C. Incubate for 30-60 minutes.

c. Conventional Steamer Method

Place tissues/slides in a pre-warmed staining dish or coplin jar containing the ImmunoDNA Retriever with Citrate or EDTA in a steamer, cover and steam for 30-60 minutes.

6. After heat treatment, transfer slides in ImmunoDNA Retriever with Citrate or EDTA to room temperature and let stand for 15-20 minutes.

7. For manual staining, perform antibody incubation at ambient temperature. For automated staining methods, perform antibody incubation according to instrument manufacturer's instructions.

8. Wash slides with ImmunoDNA washer or DI water.

9. Continue IHC staining protocol. Wash slides between each step with ImmunoDNA washer solution.

Abbreviated Immunohistochemical Protocol

Step	ImmunoDetector AP/HRP	PolyDetector AP/HRP	PolyDetector Plus HRP
Peroxidase/AP Blocker	5 min.	5 min.	5 min
Primary Antibody	30-60 min.	30-60 min.	30-60 min.
1st Step Detection	10 min.	30-45 min.	15 min.
2nd Step Detection	10 min.	Not Applicable	15 min.
Substrate-Chromogen	5-10 min.	5-10 min.	5-10 min.
Counterstain / Coverslip	Varies	Varies	Varies

Mounting Protocols

For detailed instructions using biodegradable permanent mounting media such as XyGreen PermaMounter (BSB 0169-0174) or organic solvent based resin such as PermaMounter (BSB 0094-0097), refer to PI0174 or PI0097.




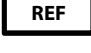


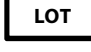
Product Limitations

Due to inherent variability present in immunohistochemical procedures (including fixation time of tissues, dilution factor of antibody, retrieval method utilized and incubation time), optimal performance should be established through the use of positive and negative controls. Results should be interpreted by a qualified medical professional.

References

1. "Entrez Gene: TRD@ T cell receptor delta locus"
2. Erikson J, et al. "Locus of the alpha-chain of the T-cell receptor is split by chromosome translocation in T-cell leukemias". *Science*. 1985;229 (4715): 784-6.
3. Lafont V, et al. "Plasticity of $\gamma\delta$ T Cells: Impact on the Anti-Tumor Response". *Frontiers in Immunology*. 2014; 5 (622): 622.
4. Gammon B, et al. "Neurotropic Gamma-Delta T-Cell Lymphoma With CD30-Positive Lymphoid Infiltrates". *The American Journal of Dermatopathology*. 2016; 38 (9): e133-6.
5. Castiglione F, et al. "TNM staging and T-cell receptor gamma expression in colon adenocarcinoma. Correlation with disease progression?". *Tumori*. 2008; 94 (3): 384-8.
6. Chen M, et al. "Characteristics of circulating T cell receptor gamma-delta T cells from individuals chronically infected with hepatitis B virus (HBV): an association between V(delta)2 subtype and chronic HBV infection". *The Journal of Infectious Diseases*. 2008; 198 (11): 1643-50.
7. U.S. Department of Health and Human Services: Centers for Disease Control and Prevention. Guidelines for Safe Work Practices in Human and Animal Medical Diagnostic Laboratories. Supplement / Vol. 61, January 6, 2012

Symbol Key / Légende des symboles/Erläuterung der Symbole

	In Vitro Diagnostic Medical Device Dispositif médical de diagnostic in vitro In-Vitro-Diagnostikum	 Storage Temperature Limites de température Zulässiger Temperaturbereich	 Manufacturer Fabricant Hersteller	 Catalog Number Référence du catalogue Bestellnummer
	Read Instructions for Use Consulter les instructions d'utilisation Gebrauchsanweisung beachten	 Expiration Date Utiliser jusqu'à Verwendbar bis	 Lot Number Code du lot Chargenbezeichnung	



69 Santa Felicia Dr., Santa Barbara, CA 93117, USA
Tel. (805) 692-2768 | Tel. (800) 561-1145 | Fax. (805) 692-2769
E-mail: sales@biosb.com | Website: www.biosb.com