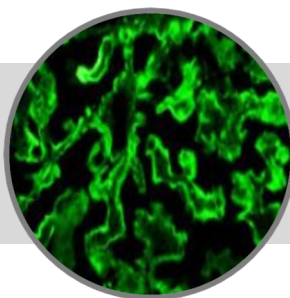
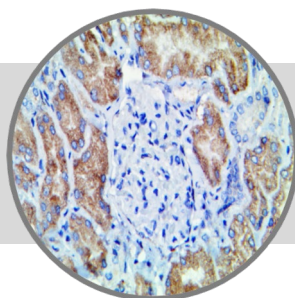


C4c

Clone: Polyclonal
Rabbit Polyclonal



Bio SB
BIOSCIENCE FOR THE WORLD
IVD
www.biosb.com

Inset: IHC and IF of C4c on a FFPE Kidney (IHC) and Frozen Glomerulonephritis Tissue (IF)

Intended Use

For In Vitro Diagnostic Use.

This antibody is intended for use in Immunohistochemical (IHC) and Immunofluorescence (IF) applications on formalin-fixed paraffin-embedded tissues (FFPE), frozen tissue sections and cell preparations. Interpretation of results should be performed by a qualified medical professional.

Immunogen

Recombinant protein corresponding to the human Complement Component 4c protein.

Summary and Explanation

Complement component 4 (C4), in humans, is a protein involved in the intricate complement system, originating from the human leukocyte antigen (HLA) system. It serves several critical functions in immunity, tolerance, and autoimmunity with the other numerous components.

Low serum complement activity or low protein concentrations of complement C4 are found on Systemic Lupus Erythematosus (SLE) and it is often associated with Congenital C4 deficiency. Complete deficiencies of complement components are among the strongest genetic risk factors for SLE or lupus-like disease, across HLA haplotypes and racial backgrounds.

Antibody Type	Rabbit Polyclonal	Clone	Polyclonal
Isotype	IgG	Reactivity	Paraffin, Frozen
Localization	Cytoplasmic, Membranous	Control	Testis, Kidney, Pancreas, Salivary Gland, Colon
Species Reactivity		Human	

Precautions

1. For professional users only. Results should be interpreted by a qualified medical professional.
2. This product contains <0.1% sodium azide (NaN₃) as a preservative. Ensure proper handling procedures are used with this reagent.
3. Always wear personal protective equipment such as laboratory coat, goggles and gloves when handling reagents.
4. Dispose of unused solution with copious amount of water.
5. Do not ingest reagent. If reagent is ingested, seek medical advice immediately.
6. Avoid contact with eyes. If contact occurs, flush with large quantities of water.
7. Follow safety precautions of the heating device used for epitope retrieval (TintoRetriever Pressure Cooker or similar).
8. For additional safety information refer to Safety Data Sheet for this product.
9. For complete recommendations for handling biological specimens, please refer to the CDC document, "Guidelines for Safe Work Practices in Human and Animal Medical Diagnostic Laboratories" (see References in this document).

Presentation

C4c is a purified immunoglobulin fraction of rabbit antiserum that is filter sterilized and diluted in buffer pH 7.5, containing BSA and sodium azide as a preservative.

Catalog No.	Antibody Type	Suggested Dilution IHC/IF	Volume/Qty
BSB 3033	Tinto Prediluted	Ready-to-Use*	3.0 mL
BSB 3034	Tinto Prediluted	Ready-to-Use*	7.0 mL
BSB 3035	Tinto Prediluted	Ready-to-Use*	15.0 mL
BSB 3036	Concentrated	1:100 / 1:100	0.1 mL
BSB 3037	Concentrated	1:100 / 1:100	0.5 mL
BSB 3038	Concentrated	1:100 / 1:100	1.0 mL

***Ready-to-Use, for IHC only**

Control Slides Available

Catalog No.	Quantity
BSB 3039	5 slides

Storage Store at 2-8°C (Control Slides: Store at 20-25°C)

Stability

This product is stable up to the expiration date on the product label. Do not use after expiration date listed on package label. Temperature fluctuations should be avoided. Store appropriately when not in use, and avoid prolonged exposure to room temperature conditions.

Specimen Preparation

Paraffin sections: The antibody can be used on formalin-fixed paraffin-embedded (FFPE) tissue sections. Ensure tissue undergoes appropriate fixation for best results. Pre-treatment of tissues with heat-induced epitope retrieval (HIER) is recommended using Bio SB ImmunoDNA Retriever with Citrate (BSB 0020-BSB 0023), ImmunoDNA Retriever with EDTA (BSB 0030-BSB 0033) or ImmunoDNA Digestor (BSB 0108-0112). See reverse side for complete protocol. Tissue should remain hydrated via use of Bio SB Immuno/DNA Washer solutions (BSB 0029 & BSB 0042).

Frozen sections and cell preparations: The antibody can be used for labeling acetone-fixed frozen sections and acetone-fixed cell preparations.

Staining Procedure**Preparation for Frozen Tissues**

1. Embed the specimen in OCT inside a cryostat.
2. Cut sections at 4-5 microns and mount on a positively charged glass slide such as the Bio SB Hydrophilic Plus Slides (BSB 7028).
4. Air dry at 58-60 °C for 10 minutes.
5. Fix in acetone 100% for 2-10 minutes.
6. Air dry for another 2 minutes.

Preparation for FFPE Tissues

1. Cut and mount 3-5 micron formalin-fixed paraffin-embedded tissues on positively charged slides such as Bio SB Hydrophilic Plus Slides (BSB 7028).
2. Air dry for 2 hours at 58° C.
3. Deparaffinize, dehydrate and rehydrate tissues.
4. Subject tissues to heat induced epitope retrieval (HIER) using a suitable retrieval solution such as ImmunoDNA Retriever with Citrate (BSB 0020-BSB 0023) or EDTA (BSB 0030-BSB 0033).
5. Any of three heating methods may be used:
 - a. TintoRetriever Pressure Cooker or Equivalent**
Place tissues/slides in a staining dish or coplin jar containing the ImmunoDNA Retriever with Citrate or EDTA, and place on trivet in the pressure cooker. Add 1-2 inches of distilled water to the pressure cooker and turn heat to high. Incubate for 15 minutes. Open and immediately transfer slides to room temperature.
 - b. TintoRetriever PT Module or Water Bath Method**
Place tissues/slides in a pre-warmed staining dish or coplin jar containing the ImmunoDNA Retriever with Citrate or EDTA at 95°-99° C. Incubate for 30-60 minutes.
 - c. Conventional Steamer Method**
Place tissues/slides in a pre-warmed staining dish or coplin jar containing the ImmunoDNA Retriever with Citrate or EDTA in a steamer, cover and steam for 30-60 minutes.
6. After heat treatment, transfer slides in ImmunoDNA Retriever with Citrate or EDTA to room temperature and let stand for 15-20 minutes.
7. Wash slides with ImmunoDNA washer or DI water.
8. For manual staining, perform antibody incubation in the dark at ambient temperature. For automated staining methods, perform antibody incubation according to instrument manufacturer's instructions.
9. Continue with IHC and IF staining protocol.

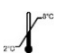



Abbreviated Immunohistochemical Protocol

Step	ImmunoDetector AP/HRP	PolyDetector AP/HRP	PolyDetector Plus AP/HRP
Peroxidase/AP Blocker	5 min.	5 min.	5 min.
Primary Antibody	30-60 min.	30-60 min.	30-60 min.
1st Step Detection	10 min.	30-45 min.	15 min.
2nd Step Detection	10 min.	Not Applicable	15 min.
Substrate-Chromogen	5-10 min.	5-10 min.	5-10 min.
Counterstain / Coverslip	Varies	Varies	Varies

Abbreviated Immunofluorescence Protocol

Step	Incubation Time
Rinse slides in IF wash buffer	5 min
Apply Antibody	30-60 min.
Rinse with 3 changes of IF wash buffer	3 x 5 min. each
Apply Rabbit FluoroDetector FITC	15 min.
Rinse with 3 changes of IF wash buffer	3 x 5 min. each
Coverslip with FluoroMounter medium	

Symbol Key / Légende des symboles/Erläuterung der Symbole

IVD	In Vitro Diagnostic Medical Device Dispositif médical de diagnostic in vitro In-Vitro-Diagnostikum	 Storage Temperature Limites de température Zulässiger Temperaturbereich	 Manufacturer Fabricant Hersteller	REF Catalog Number Référence du catalogue Bestellnummer
		 Read Instructions for Use Consulter les instructions d'utilisation Gebrauchsanweisung beachten	 Expiration Date Utiliser jusque Verwendbar bis	LOT Lot Number Code du lot Chargenbezeichnung

Mounting Protocols

IHC:

For detailed instructions using biodegradable permanent mounting media such as XyGreen PermaMounter (BSB 0169-0174) or organic solvent-based resin such as PermaMounter (BSB 0094-0097), refer to PI0174 or PI0097.

IF:

1. Bring FluoroMounter or FluoroMounter with DAPI to room temperature.
2. Rinse slides with distilled or deionized water.
3. Remove excess of water from slides before laying them flat in the dark.
4. Turn the media bottle upside down before opening the dropper bottle.
5. Apply 1-3 drops of FluoroMounter to each slide making sure the specimen is covered.
6. Incubate 3-5 minutes at room temperature in the dark.
7. Coverslip.
8. Observe under a fluorescent microscope using the appropriate filters.
9. The slides are recommended to be stored at 2-8 °C in the dark.

Product Limitations

Due to inherent variability present in immunohistochemical and immunofluorescent procedures (including fixation time of tissues, dilution factor of antibody, retrieval and detection system used and incubation time), optimal performance should be established using positive and negative controls. Results should be interpreted by a qualified medical professional.

References

1. Yang Y, et al. Diversity in intrinsic strengths of the human complement system: serum C4 protein concentrations correlate with C4 gene size and polygenic variations, hemolytic activities, and body mass index. *Journal of Immunology*. 2003; 171 (5): 2734-45.
2. Yang Y, et al. The intricate role of complement component C4 in human systemic lupus erythematosus. *Curr Dir Autoimmun*. 2004; 7:98-132.
3. U.S. Department of Health and Human Services: Centers for Disease Control and Prevention. Guidelines for Safe Work Practices in Human and Animal Medical Diagnostic Laboratories. Supplement / Vol. 61, January 6, 2012.

Bio SB
BIOSCIENCE FOR THE WORLD



69 Santa Felicia Dr., Santa Barbara, CA 93117, USA
Tel. (805) 692-2768 | Tel. (800) 561-1145 | Fax. (805) 692-2769
E-mail: sales@biosb.com | Website: www.biosb.com