

# Recombinant Mouse ErbB-2/HER2/CD340 Protein

Catalog No.: RP01165 **Recombinant**

## Sequence Information

Species	Gene ID	Swiss Prot
Mouse	13866	P70424

### Tags

C-His

### Synonyms

CD340;c-erbB2;c-  
neu;ErbB-2;HER-2;HER2;Neu

## Product Information

Source	Purification
HEK293 cells	> 97% by SDS- PAGE.

### Endotoxin

< 0.1 EU/μg of the protein by LAL  
method.

### Formulation

Lyophilized from a 0.22 μm filtered  
solution of PBS, pH 7.4. Contact us for  
customized product form or  
formulation.

### Reconstitution

Reconstitute to a concentration of  
0.1-0.5 mg/mL in sterile distilled water.

## Background

## Basic Information

### Description

Recombinant Mouse ErbB-2/HER2/CD340 Protein is produced by HEK293 cells expression system. The target protein is expressed with sequence (Thr23-Thr653) of mouse HER2/ErbB2 (Accession #NP\_001003817.1) fused with a 6×His tag at the C-terminus.

### Bio-Activity

Measured by its binding ability in a functional ELISA. Immobilized Human ErbB2 at 1 μg/mL (100 μL/well) can bind ErbB2 Rabbit pAb with a linear range of 0.06-0.8 ng/mL.

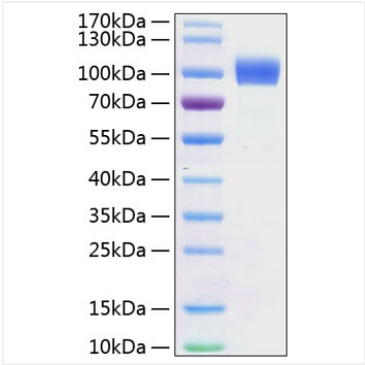
### Storage

Store the lyophilized protein at -20°C to -80 °C for long term.  
After reconstitution, the protein solution is stable at -20 °C for 3 months, at 2-8 °C for up to 1 week.  
Avoid repeated freeze/thaw cycles.

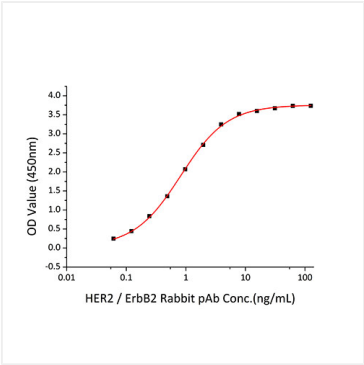
## Contact

 | [www.abclonal.com](http://www.abclonal.com)

# Validation Data



Recombinant Mouse ErbB-2/HER2/CD340 Protein was determined by SDS-PAGE with Coomassie Blue, showing a band at 100-110 kDa.



Immobilized Human ErbB2 at 1 µg/mL (100 µL/well) can bind ErbB2 Rabbit pAb with a linear range of 0.06-0.8 ng/mL.