

Recombinant Human SLAMF2/CD48 Protein

Catalog No.: RP00107 **Recombinant**

Sequence Information

| Species | Gene ID | Swiss Prot |
|---------|---------|------------|
| Human | 962 | P09326 |

Tags

C-hFc&His

Synonyms

BCM1;BLAST;BLAST1;hCD48;mCD48;MEM-102;SLAMF2

Product Information

| Source | Purification |
|--------------|--------------------|
| HEK293 cells | > 97% by SDS-PAGE. |

Endotoxin

< 0.1 EU/μg of the protein by LAL method.

Formulation

Lyophilized from a 0.22 μm filtered solution of PBS, pH 7.4. Contact us for customized product form or formulation.

Reconstitution

Reconstitute to a concentration of 0.1-0.5 mg/mL in sterile distilled water.

Background

This protein is a member of the CD2 subfamily of immunoglobulin-like receptors which includes SLAM (signaling lymphocyte activation molecules) proteins. The encoded protein is found on the surface of lymphocytes and other immune cells, dendritic cells and endothelial cells, and participates in activation and differentiation pathways in these cells. The encoded protein does not have a transmembrane domain, however, but is held at the cell surface by a GPI anchor via a C-terminal domain which maybe cleaved to yield a soluble form of the receptor. Multiple transcript variants encoding different isoforms have been found for this gene.

Basic Information

Description

Recombinant Human SLAMF2/CD48 Protein is produced by HEK293 expression system. The target protein is expressed with sequence (Gln27-Ser220) of human CD48/SLAMF2/BCM1 (Accession #NP_001769.2) fused with an Fc, 6xHis tag at the C-terminus.

Bio-Activity

Measured by its binding ability in a functional ELISA. Immobilized Recombinant human CD244 at 5 μg/mL (100 μL/well) can bind Recombinant human CD48 with a linear range of 0.15-0.65 μg/mL.

Storage

Store the lyophilized protein at -20°C to -80 °C for long term.

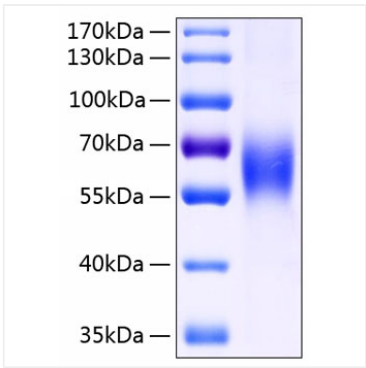
After reconstitution, the protein solution is stable at -20 °C for 3 months, at 2-8 °C for up to 1 week.

Avoid repeated freeze/thaw cycles.

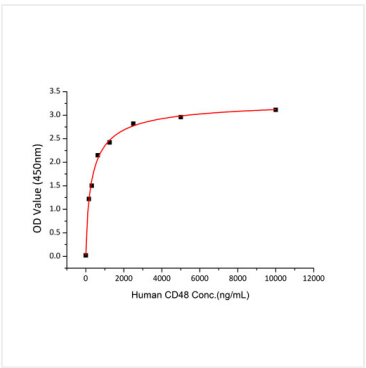
Contact

 | www.abclonal.com

Validation Data



Recombinant Human SLAMF2/CD48 Protein was determined by SDS-PAGE with Coomassie Blue, showing a band at 63-73 kDa.



Immobilized Recombinant human CD244 at 5 µg/mL (100 µL/well) can bind Recombinant human CD48 with a linear range of 0.15-0.65 µg/mL.