

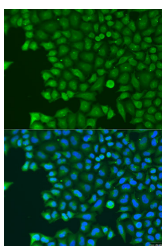
## ABCE1 Polyclonal Antibody

**Catalog No.** E-AB-67952  
**Storage** Store at -20°C. Avoid freeze / thaw cycles.  
**Applications** IF

**Reactivity** H,M  
**Host** Rabbit  
**Isotype** IgG

**Note:** Centrifuge before opening to ensure complete recovery of vial contents.

### Images



Immunofluorescence analysis of U2OS cells using ABCE1 Polyclonal Antibody at dilution of 1:100. Blue: DAPI for nuclear staining.

### Immunogen Information

**Immunogen** Recombinant fusion protein of human ABCE1 (NP\_002931.2).  
**GeneID** 6059  
**Swissprot** P61221  
**Synonyms** ABCE1,ABC38,OABP,RLI,RLI1,RNASEL1,RNASE LI,RNS4I

### Product Information

**Buffer** PBS with 0.02% sodium azide, 50% glycerol, pH7.3.  
**Purify** Affinity purification  
**Dilution** IF 1:50-1:200

### Background

The protein encoded by this gene is a member of the superfamily of ATP-binding cassette (ABC) transporters. ABC proteins transport various molecules across extra- and intra-cellular membranes. ABC genes are divided into seven distinct subfamilies (ABC1, MDR/TAP, MRP, ALD, OABP, GCN20, White). This protein is a member of the OABP subfamily. Alternatively referred to as the RNase L inhibitor, this protein functions to block the activity of ribonuclease L. Activation of ribonuclease L leads to inhibition of protein synthesis in the 2-5A/RNase L system, the central pathway for viral interferon action. Two transcript variants encoding the same protein have been found for this gene.

### For Research Use Only

Thank you for your recent purchase.  
If you would like to learn more about antibodies, please visit [www.elabscience.com](http://www.elabscience.com).

### Focus on your research Service for life science

Applications:WB-Western Blot IHC-Immunohistochemistry IF-Immunofluorescence IP-Immunoprecipitation FC-Flow cytometry ChIP-Chromatin Immunoprecipitation Reactivity: H-Human R-Rat M-Mouse Mk-Monkey Dg-Dog Ch-Chicken Hm-Hamster Rb-Rabbit Sh-Sheep Pg-Pig Z-Zebrafish X-Xenopus C-Cow.