

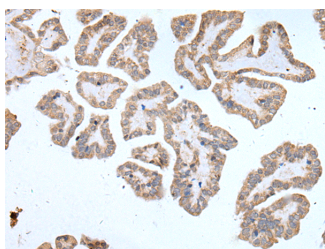
## ABCD1 Polyclonal Antibody

**Catalog No.** E-AB-19528  
**Storage** Store at -20°C. Avoid freeze / thaw cycles.  
**Applications** IHC,ELISA

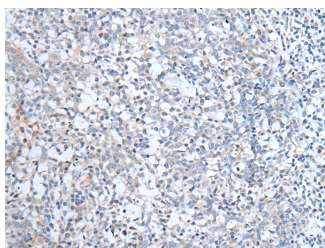
**Reactivity** H,M  
**Host** Rabbit  
**Isotype** IgG

**Note:** Centrifuge before opening to ensure complete recovery of vial contents.

### Images



Immunohistochemistry of paraffin-embedded Human thyroid cancer tissue using ABCD1 Polyclonal Antibody at dilution of 1:80(×200)



Immunohistochemistry of paraffin-embedded Human tonsil tissue using ABCD1 Polyclonal Antibody at dilution of 1:80(×200)

### Immunogen Information

**Immunogen** Synthetic peptide of human ABCD1  
**Gene Accession** NP000024  
**Swissprot** P33897  
**Synonyms** ABC42,Abcd1,ABCD1,ALD,Aldgh,ALDP,AMN,AT P binding cassette,RP23 373N8.2\

### Product Information

**Buffer** PBS with 0.05% NaN<sub>3</sub> and 40% Glycerol,pH7.4  
**Purify** Antigen affinity purification  
**Dilution** IHC 1:60-1:450, ELISA 1:5000-1:10000

### Background

ABCD1 (also known as ALDP) is a member of the ATP-binding cassette (ABC) transporter superfamily which functions as transporter for a wide variety of substrates. It localizes to the peroxisomal membrane. The exact function is not clear so far. Various mutations of ABCD1 cause X-linked adrenoleukodystrophy (X-ALD),an inherited neurodegenerative disease affecting the nervous system white matter and adrenal cortex.

### For Research Use Only

Thank you for your recent purchase.  
If you would like to learn more about antibodies,please visit [www.elabscience.com](http://www.elabscience.com).

### Focus on your research Service for life science

Applications:WB-Western Blot IHC-Immunohistochemistry IF-Immunofluorescence IP-Immunoprecipitation FC-Flow cytometry ChIP-Chromatin Immunoprecipitation Reactivity: H-Human R-Rat M-Mouse Mk-Monkey Dg-Dog Ch-Chicken Hm-Hamster Rb-Rabbit Sh-Sheep Pg-Pig Z-Zebrafish X-Xenopus C-Cow.