

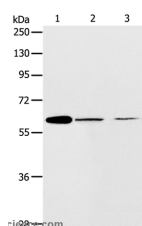
ABCE1 Polyclonal Antibody

Catalog No. E-AB-10695
Storage Store at -20°C. Avoid freeze / thaw cycles.
Applications WB,ELISA

Reactivity H,M
Host Rabbit
Isotype IgG

Note: Centrifuge before opening to ensure complete recovery of vial contents.

Images



Western Blot analysis of NIH/3T3 and SKOV3 cell, Human ovarian cancer tissue using ABCE1 Polyclonal Antibody at dilution of 1:450

Immunogen Information

Immunogen Recombinant protein of human ABCE1
Gene Accession BC016283
Swissprot P61221
Synonyms RLI,OABP,ABC38,RNS4I,RNASEL1,RNASELI

Product Information

Calculated MW 67kDa
Buffer PBS with 0.05% sodium azide and 50% glycerol, PH7.4
Purify Affinity purification
Dilution WB 1:500-1:2000

Background

The protein encoded by this gene is a member of the superfamily of ATP-binding cassette (ABC) transporters. ABC proteins transport various molecules across extra- and intra-cellular membranes. ABC genes are divided into seven distinct subfamilies (ABC1, MDR/TAP, MRP, ALD, OABP, GCN20, White). This protein is a member of the OABP subfamily. Alternatively referred to as the RNase L inhibitor, this protein functions to block the activity of ribonuclease L. Activation of ribonuclease L leads to inhibition of protein synthesis in the 2-5A/RNase L system, the central pathway for viral interferon action. Two transcript variants encoding the same protein have been found for this gene.

For Research Use Only

Thank you for your recent purchase.
If you would like to learn more about antibodies, please visit www.elabscience.com.

Focus on your research Service for life science

Applications:WB-Western Blot IHC-Immunohistochemistry IF-Immunofluorescence IP-Immunoprecipitation FC-Flow cytometry ChIP-Chromatin Immunoprecipitation Reactivity: H-Human R-Rat M-Mouse Mk-Monkey Dg-Dog Ch-Chicken Hm-Hamster Rb-Rabbit Sh-Sheep Pg-Pig Z-Zebrafish X-Xenopus C-Cow.