

Recombinant Human SCF/c-Kit Ligand Protein (His Tag)(Active)

Catalog No. PKSH033081

Description

Synonyms	Kit Ligand; Mast Cell Growth Factor; MGF; Stem Cell Factor; SCF; c-Kit ligand; KITLG; MGF; SCF
Species	Human
Expression_host	Human Cells
Sequence	Glu26-His214
Accession	P21583
Mol_Mass	22.0 kDa
AP_Mol_Mass	35 kDa
Tag	C-6His
Bio_activity	Measured in a cell proliferation assay using TF-1 human erythroleukemic cells. The ED50 for this effect is 2-10 ng/ml.

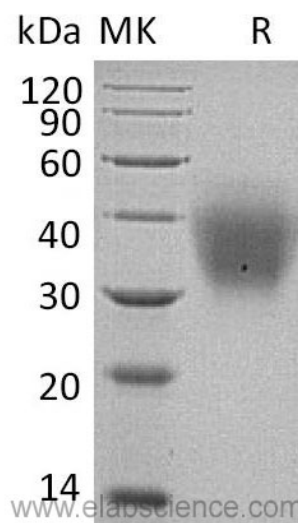
Properties

Purity	> 95 % as determined by reducing SDS-PAGE.
Endotoxin	< 1.0 EU per µg as determined by the LAL method.
Storage	Generally, lyophilized proteins are stable for up to 12 months when stored at -20 to -80°C. Reconstituted protein solution can be stored at 4-8°C for 2-7 days. Aliquots of reconstituted samples are stable at < -20°C for 3 months.
Shipping	This product is provided as lyophilized powder which is shipped with ice packs.
Formulation	Lyophilized from a 0.2 µm filtered solution of 20mM PB,150mM NaCl,pH7.4.
Reconstitution	Please refer to the printed manual for detailed information.

Background

Stem Cell Factor (SCF) is a hematopoietic growth factor that exerts its activity at the early stages of hematopoiesis. SCF stimulates the proliferation of myeloid, erythroid, and lymphoid progenitors in bone marrow cultures and has been shown to act synergistically with colony stimulating factors.

SDS-PAGE



Bioactivity

