

AAR2 Ab

[Images\(1\)](#)

Cat.#: DF15296
Size: 100ul, 200ul

Concn.: ~1mg/ml
Source: Rabbit

Mol.Wt.:
Clonality: Polyclonal

Application: IHC 1:50-1:200, ELISA(peptide) 1:20000-1:40000
*The optimal dilutions should be determined by the end user.

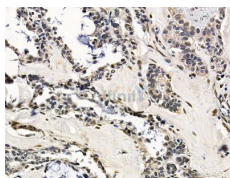
Reactivity: Human, Mouse

Storage: Rabbit IgG in phosphate buffered saline, pH 7.4, 150mM NaCl, 0.02% sodium azide and 50% glycerol. Store at -20 °C. Stable for 12 months from date of receipt.

Purification: The antiserum was purified by peptide affinity chromatography using SulfoLink™ Coupling Resin (Thermo Fisher Scientific).

Immunogen: A synthesized peptide derived from human AAR2.

Uniprot: Q9Y312



DF15296 at 1/100 staining human ovarian cancer by IHC-P. The sample was formaldehyde fixed and a heat mediated antigen retrieval step in citrate buffer was performed. The sample was then blocked and incubated with the primary Ab at 4°C overnight. An HRP conjugated anti-rabbit Ab was used as the secondary Ab.

For Research Use Only. Not for use in diagnostic and therapeutic procedures. Not for resale without express authorization.