

DLK1 Ab

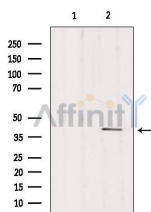
[Images\(1\)](#)

Cat.#: DF7062
Size: 100ul,200ul,50ul

Concn.: ~1mg/ml
Source: Rabbit

Mol.Wt.: 41kDa
Clonality: Polyclonal

Application:	WB 1:500-1:2000, ELISA(peptide) 1:20000-1:40000 *The optimal dilutions should be determined by the end user.
Reactivity:	Human,Mouse,Rat
Purification:	The antiserum was purified by peptide affinity chromatography using SulfoLink™ Coupling Resin (Thermo Fisher Scientific).
Immunogen:	A synthesized peptide derived from human DLK1, corresponding to a region within the internal amino acids.
Uniprot:	P80370
Description:	DLK1 (delta-like-1), also known as fetal antigen 1 (FA1) and preadipocyte factor 1 (pref-1), is a member of the epidermal growth factor (EGF)-like family of proteins, containing six tandem EGF-like repeats (1,2). DLK1 is a paternally expressed, imprinted gene that plays an important role in normal development and in the maintenance of homeostasis of adipose tissue mass . DLK1 deficient mice display growth retardation, obesity, skeletal malformation, and increased serum lipid metabolites . It has been reported that the ectodomain of DLK1 is shredded from the cell surface and inhibits adipocyte differentiation (5-7).
Storage:	Rabbit IgG in phosphate buffered saline , pH 7.4, 150mM NaCl, 0.02% sodium azide and 50% glycerol. Store at -20 °C. Stable for 12 months from date of receipt.



Western blot analysis of extracts from mouse brain, using DLK1 Ab. Lane 1 was treated with the blocking peptide.

IMPORTANT: For western blot, incubate membrane with diluted primary Ab in 5% w/v milk , 1X TBS, 0.1% Tween@20 at 4°C with gentle shaking, overnight.

For Research Use Only. Not for use in diagnostic and therapeutic procedures. Not for resale without express authorization.