

Mitofusin-1/MFN1 Rabbit pAb

Catalog No.: A9880 **20 Publications**

Basic Information

Observed MW

84kDa

Calculated MW

41kDa/71kDa/84kDa

Category

Primary antibody

Applications

WB,IF/ICC

Cross-Reactivity

Human, Mouse, Rat

Background

The protein encoded by this gene is a mediator of mitochondrial fusion. This protein and mitofusin 2 are homologs of the Drosophila protein fuzzy onion (Fzo). They are mitochondrial membrane proteins that interact with each other to facilitate mitochondrial targeting.

Recommended Dilutions

WB 1:500 - 1:2000

IF/ICC 1:50 - 1:200

Immunogen Information

Gene ID

55669

Swiss Prot

Q8IWA4

Immunogen

A synthetic peptide corresponding to a sequence within amino acids 1-100 of human Mitofusin-1/MFN1 (NP_284941.2).

Synonyms

MFN1;hfzo1;hfzo2

Contact

 | www.abclonal.com

Product Information

Source

Rabbit

Isotype

IgG

Purification

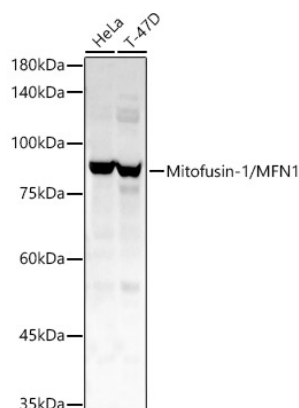
Affinity purification

Storage

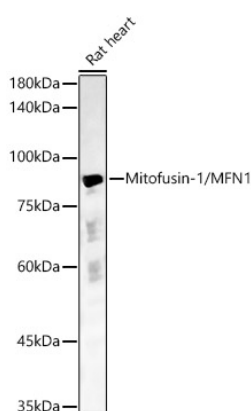
Store at -20°C. Avoid freeze / thaw cycles.

Buffer: PBS with 0.05% proclin300,50% glycerol,pH7.3.

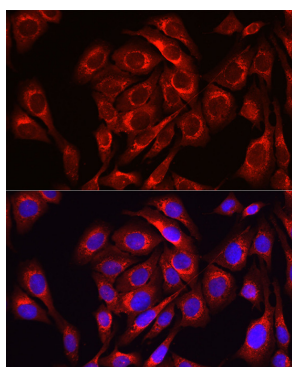
Validation Data



Western blot analysis of various lysates, using Mitofusin-1/MFN1 antibody (A9880) at 1:1140 dilution.
Secondary antibody: HRP Goat Anti-Rabbit IgG (H+L) (A5014) at 1:10000 dilution.
Lysates/proteins: 25ug per lane.
Blocking buffer: 3% nonfat dry milk in TBST.
Detection: ECL Basic Kit (RM00020).
Exposure time: 10s.



Western blot analysis of Rat heart, using Mitofusin-1/MFN1 antibody (A9880) at 1:1140 dilution.
Secondary antibody: HRP Goat Anti-Rabbit IgG (H+L) (A5014) at 1:10000 dilution.
Lysates/proteins: 25ug per lane.
Blocking buffer: 3% nonfat dry milk in TBST.
Detection: ECL Basic Kit (RM00020).
Exposure time: 10s.



Immunofluorescence analysis of U2OS cells using Mitofusin-1/MFN1 Rabbit pAb (A9880) at dilution of 1:100 (40x lens).
Blue: DAPI for nuclear staining.