

Hemoglobin subunit alpha (HBA1) Rabbit mAb

Catalog No.: A9293 **Recombinant**

Basic Information

Observed MW

11kDa

Calculated MW

15kDa

Category

Primary antibody

Applications

WB, IHC, IF/ICC

Cross-Reactivity

Human, Mouse, Rat

CloneNo number

ARC1510

Background

The human alpha globin gene cluster located on chromosome 16 spans about 30 kb and includes seven loci: 5'- zeta - pseudozeta - mu - pseudoalpha-1 - alpha-2 - alpha-1 - theta - 3'. The alpha-2 (HBA2) and alpha-1 (HBA1) coding sequences are identical. These genes differ slightly over the 5' untranslated regions and the introns, but they differ significantly over the 3' untranslated regions. Two alpha chains plus two beta chains constitute HbA, which in normal adult life comprises about 97% of the total hemoglobin; alpha chains combine with delta chains to constitute HbA-2, which with HbF (fetal hemoglobin) makes up the remaining 3% of adult hemoglobin. Alpha thalassemias result from deletions of each of the alpha genes as well as deletions of both HBA2 and HBA1; some nondeletion alpha thalassemias have also been reported. [provided by RefSeq, Jul 2008]

Recommended Dilutions

WB	1:500 - 1:2000
IHC	1:50 - 1:200
IF/ICC	1:50 - 1:200

Immunogen Information

Gene ID	Swiss Prot
3039	P69905

Immunogen

A synthetic peptide corresponding to a sequence within amino acids 1-100 of human Hemoglobin subunit alpha (HBA1) (HBA1) (P69905).

Synonyms

HBA-T3; HBH

Contact

 | www.abclonal.com

Product Information

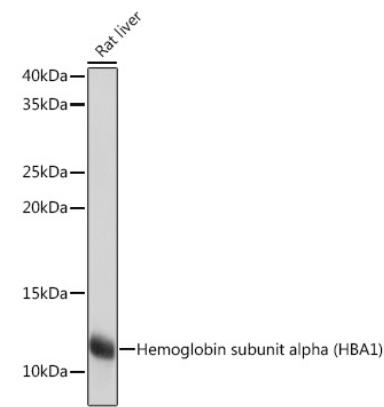
Source	Isotype	Purification
Rabbit	IgG	Affinity purification

Storage

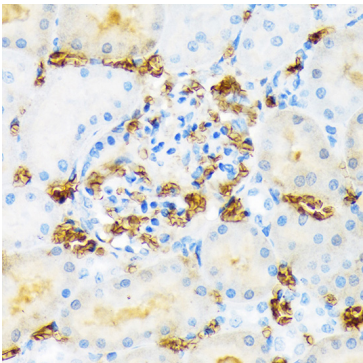
Store at -20°C. Avoid freeze / thaw cycles.

Buffer: PBS with 0.01% thiomersal, 0.05% BSA, 50% glycerol, pH7.3.

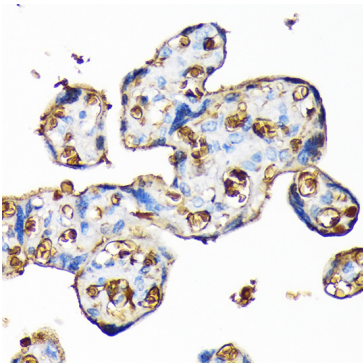
Validation Data



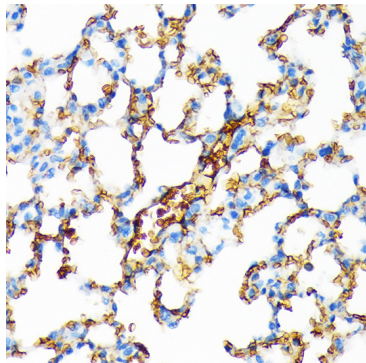
Western blot analysis of extracts of Rat liver, using Hemoglobin subunit alpha (HBA1) (HBA1) Rabbit mAb (A9293) at 1:1000 dilution.
Secondary antibody: HRP Goat Anti-Rabbit IgG (H+L) (A5014) at 1:10000 dilution.
Lysates/proteins: 25ug per lane.
Blocking buffer: 3% nonfat dry milk in TBST.
Detection: ECL Basic Kit (RM00020).
Exposure time: 1s.



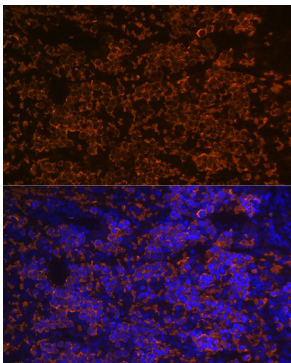
Immunohistochemistry of paraffin-embedded red blood cell staining in rat kidney using Hemoglobin subunit alpha (HBA1) (HBA1) Rabbit mAb (A9293) at dilution of 1:100 (40x lens).Perform microwave antigen retrieval with 10 mM Tris/EDTA buffer pH 9.0 before commencing with IHC staining protocol.



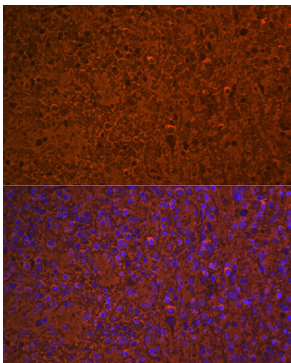
Immunohistochemistry of paraffin-embedded blood cell staining in human placenta using Hemoglobin subunit alpha (HBA1) (HBA1) Rabbit mAb (A9293) at dilution of 1:100 (40x lens).Perform microwave antigen retrieval with 10 mM Tris/EDTA buffer pH 9.0 before commencing with IHC staining protocol.



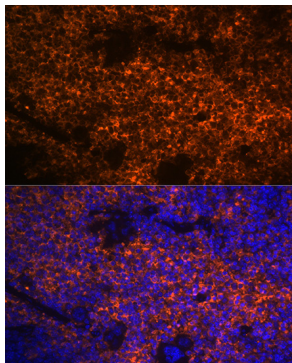
Immunohistochemistry of paraffin-embedded blood cell staining in mouse lung using Hemoglobin subunit alpha (HBA1) (HBA1) Rabbit mAb (A9293) at dilution of 1:100 (40x lens).Perform microwave antigen retrieval with 10 mM Tris/EDTA buffer pH 9.0 before commencing with IHC staining protocol.



Immunofluorescence analysis of rat spleen using Hemoglobin subunit alpha (HBA1) (HBA1) Rabbit mAb (A9293) at dilution of 1:100 (40x lens). Blue: DAPI for nuclear staining.



Immunofluorescence analysis of human spleen using Hemoglobin subunit alpha (HBA1) (HBA1) Rabbit mAb (A9293) at dilution of 1:100 (40x lens). Blue: DAPI for nuclear staining.



Immunofluorescence analysis of mouse spleen using Hemoglobin subunit alpha (HBA1) (HBA1) Rabbit mAb (A9293) at dilution of 1:100 (40x lens). Blue: DAPI for nuclear staining.