

Xanthine Oxidase (XDH) Rabbit mAb

Catalog No.: A9022 **Recombinant**

Basic Information

Observed MW

150kDa

Calculated MW

146kDa

Category

Primary antibody

Applications

WB, IHC, IF/ICC

Cross-Reactivity

Human, Mouse, Rat

CloneNo number

ARC51279

Background

Xanthine dehydrogenase belongs to the group of molybdenum-containing hydroxylases involved in the oxidative metabolism of purines. The encoded protein has been identified as a moonlighting protein based on its ability to perform mechanistically distinct functions. Xanthine dehydrogenase can be converted to xanthine oxidase by reversible sulfhydryl oxidation or by irreversible proteolytic modification. Defects in xanthine dehydrogenase cause xanthinuria, may contribute to adult respiratory stress syndrome, and may potentiate influenza infection through an oxygen metabolite-dependent mechanism. [provided by RefSeq, Jan 2014]

Recommended Dilutions

WB	1:500 - 1:2000
IHC	1:50 - 1:200
IF/ICC	1:50 - 1:200

Immunogen Information

Gene ID

7498

Swiss Prot

P47989

Immunogen

Recombinant fusion protein containing a sequence corresponding to amino acids 202-293 of human Xanthine Oxidase (XDH) (P47989).

Synonyms

XAN1; XO; XOR

Contact

 | www.abclonal.com

Product Information

Source

Rabbit

Isotype

IgG

Purification

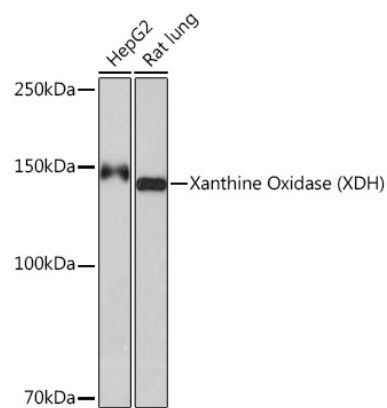
Affinity purification

Storage

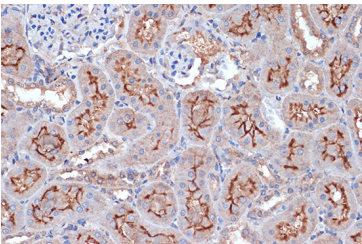
Store at -20°C. Avoid freeze / thaw cycles.

Buffer: PBS with 0.02% sodium azide, 0.05% BSA, 50% glycerol, pH 7.3.

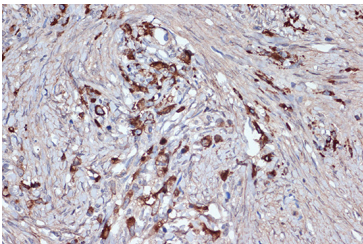
Validation Data



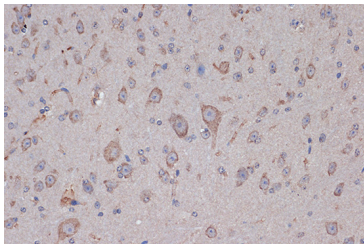
Western blot analysis of extracts of various cell lines, using Xanthine Oxidase (XDH) (XDH) Rabbit mAb (A9022) at 1:1000 dilution.
Secondary antibody: HRP Goat Anti-Rabbit IgG (H+L) (A5014) at 1:10000 dilution.
Lysates/proteins: 25ug per lane.
Blocking buffer: 3% nonfat dry milk in TBST.
Detection: ECL Basic Kit (RM00020).
Exposure time: 60s.



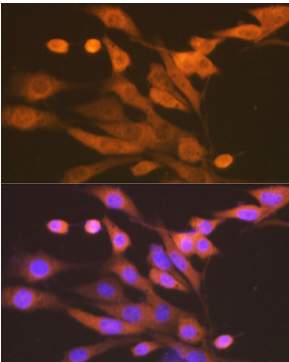
Immunohistochemistry of paraffin-embedded rat kidney using Xanthine Oxidase (XDH) (XDH) Rabbit mAb (A9022) at dilution of 1:100 (40x lens).Perform microwave antigen retrieval with 10 mM Tris/EDTA buffer pH 9.0 before commencing with IHC staining protocol.



Immunohistochemistry of paraffin-embedded human oophoroma using Xanthine Oxidase (XDH) (XDH) Rabbit mAb (A9022) at dilution of 1:100 (40x lens).Perform microwave antigen retrieval with 10 mM Tris/EDTA buffer pH 9.0 before commencing with IHC staining protocol.



Immunohistochemistry of paraffin-embedded mouse brain using Xanthine Oxidase (XDH) (XDH) Rabbit mAb (A9022) at dilution of 1:100 (40x lens).Perform microwave antigen retrieval with 10 mM Tris/EDTA buffer pH 9.0 before commencing with IHC staining protocol.



Immunofluorescence analysis of NIH-3T3 cells using Xanthine Oxidase (XDH) (XDH) Rabbit mAb (A9022) at dilution of 1:100 (40x lens). Blue: DAPI for nuclear staining.