

BRIP1 Rabbit pAb

Catalog No.: A6804 **1 Publications**

Basic Information

Observed MW

145kDa

Calculated MW

112kDa/140kDa

Category

Primary antibody

Applications

WB

Cross-Reactivity

Human

Background

The protein encoded by this gene is a member of the RecQ DEAH helicase family and interacts with the BRCT repeats of breast cancer, type 1 (BRCA1). The bound complex is important in the normal double-strand break repair function of breast cancer, type 1 (BRCA1). This gene may be a target of germline cancer-inducing mutations.

Recommended Dilutions

WB 1:500 - 1:2000

Immunogen Information

Gene ID

83990

Swiss Prot

Q9BX63

Immunogen

Recombinant fusion protein containing a sequence corresponding to amino acids 1-260 of human BRIP1 (NP_114432.2).

Synonyms

BRIP1;BACH1;FANCJ;OF

Contact

 | www.abclonal.com

Product Information

Source

Rabbit

Isotype

IgG

Purification

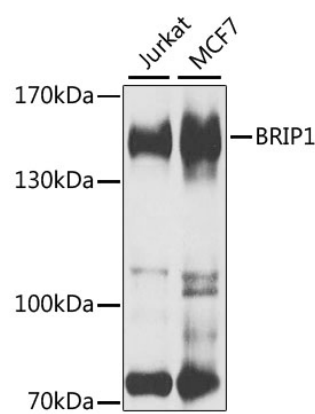
Affinity purification

Storage

Store at -20°C. Avoid freeze / thaw cycles.

Buffer: PBS with 0.02% sodium azide, 50% glycerol, pH7.3.

Validation Data



Western blot analysis of extracts of various cell lines, using BRIP1 antibody (A6804) at 1:1000 dilution.
Secondary antibody: HRP Goat Anti-Rabbit IgG (H+L) (A5014) at 1:10000 dilution.
Lysates/proteins: 25ug per lane.
Blocking buffer: 3% nonfat dry milk in TBST.
Detection: ECL Basic Kit (RM00020).
Exposure time: 30s.