

LDHB Rabbit mAb

Catalog No.: A5131 **Recombinant**

Basic Information

Observed MW

36kDa

Calculated MW

37kDa

Category

Primary antibody

Applications

WB, IHC, IP

Cross-Reactivity

Human, Rat

CloneNo number

ARC1217

Background

This gene encodes the B subunit of lactate dehydrogenase enzyme, which catalyzes the interconversion of pyruvate and lactate with concomitant interconversion of NADH and NAD⁺ in a post-glycolysis process. Alternatively spliced transcript variants have been found for this gene. Recent studies have shown that a C-terminally extended isoform is produced by use of an alternative in-frame translation termination codon via a stop codon readthrough mechanism, and that this isoform is localized in the peroxisomes. Mutations in this gene are associated with lactate dehydrogenase B deficiency. Pseudogenes have been identified on chromosomes X, 5 and 13. [provided by RefSeq, Feb 2016]

Recommended Dilutions

WB	1:500 - 1:2000
IHC	1:50 - 1:200
IP	1:50 - 1:200

Immunogen Information

Gene ID

3945

Swiss Prot

P07195

Immunogen

A synthetic peptide corresponding to a sequence within amino acids 1-100 of human LDHB (P07195).

Synonyms

HEL-S-281; LDH-B; LDH-H; LDHBD; TRG-5

Contact

 | www.abclonal.com

Product Information

Source

Rabbit

Isotype

IgG

Purification

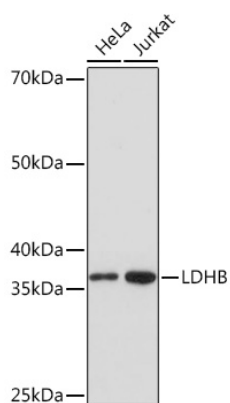
Affinity purification

Storage

Store at -20°C. Avoid freeze / thaw cycles.

Buffer: PBS with 0.01% thiomersal, 0.05% BSA, 50% glycerol, pH 7.3.

Validation Data



Western blot analysis of extracts of various cell lines, using LDHB Rabbit mAb (A5131) at 1:1000 dilution.

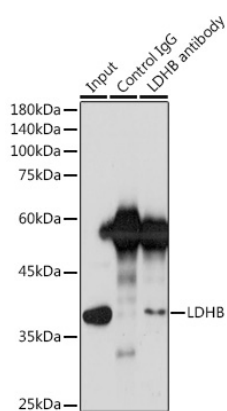
Secondary antibody: HRP Goat Anti-Rabbit IgG (H+L) (A5014) at 1:10000 dilution.

Lysates/proteins: 25ug per lane.

Blocking buffer: 3% nonfat dry milk in TBST.

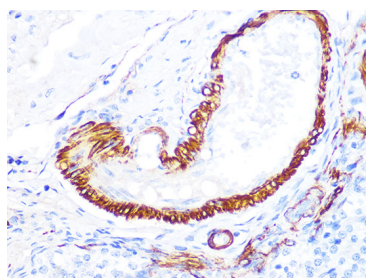
Detection: ECL Basic Kit (RM00020).

Exposure time: 5s.

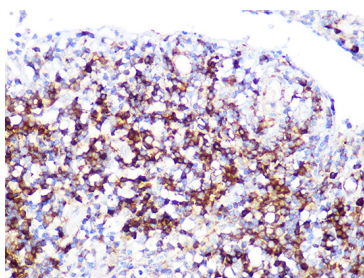


Immunoprecipitation analysis of 300ug extracts of Jurkat cells using 3ug LDHB antibody (A5131).

Western blot was performed from the immunoprecipitate using LDHB antibody (A5131) at a dilution of 1:1000.



Immunohistochemistry of paraffin-embedded rat ovary using LDHB Rabbit mAb (A5131) at dilution of 1:100 (40x lens). Perform microwave antigen retrieval with 10 mM PBS buffer pH 7.2 before commencing with IHC staining protocol.



Immunohistochemistry of paraffin-embedded human appendix using LDHB Rabbit mAb (A5131) at dilution of 1:100 (40x lens). Perform microwave antigen retrieval with 10 mM PBS buffer pH 7.2 before commencing with IHC staining protocol.