

NF- κ B p65/RelA Rabbit pAb

Catalog No.: A2547 **53 Publications**

Basic Information

Observed MW

65kDa

Calculated MW

58kDa/59kDa/60kDa

Category

Primary antibody

Applications

WB, IHC, IF/ICC

Cross-Reactivity

Human, Mouse, Rat

Background

NF- κ B is a ubiquitous transcription factor involved in several biological processes. It is held in the cytoplasm in an inactive state by specific inhibitors. Upon degradation of the inhibitor, NF- κ B moves to the nucleus and activates transcription of specific genes. NF- κ B is composed of NFKB1 or NFKB2 bound to either REL, RELA, or RELB. The most abundant form of NF- κ B is NFKB1 complexed with the product of this gene, RELA. Four transcript variants encoding different isoforms have been found for this gene.

Recommended Dilutions

WB	1:500 - 1:2000
IHC	1:50 - 1:200
IF/ICC	1:50 - 1:200

Immunogen Information

Gene ID	Swiss Prot
5970	Q04206

Immunogen

Recombinant fusion protein containing a sequence corresponding to amino acids 50-180 of human NF- κ B p65/RelA (NP_068810.3).

Synonyms

NFKB3;p65;NF- κ B p65;RELA;CMCU

Contact

 | www.abclonal.com

Product Information

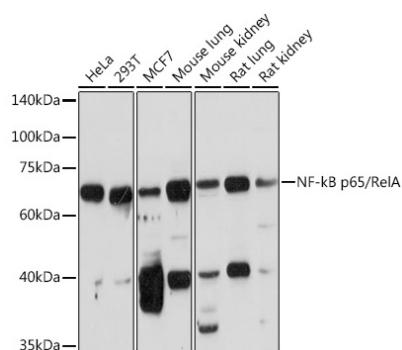
Source	Isotype	Purification
Rabbit	IgG	Affinity purification

Storage

Store at -20°C. Avoid freeze / thaw cycles.

Buffer: PBS with 0.01% thiomersal, 50% glycerol, pH7.3.

Validation Data



Western blot analysis of extracts of various cell lines, using NF-kB p65/RelA Rabbit pAb (A2547) at 1:1000 dilution.

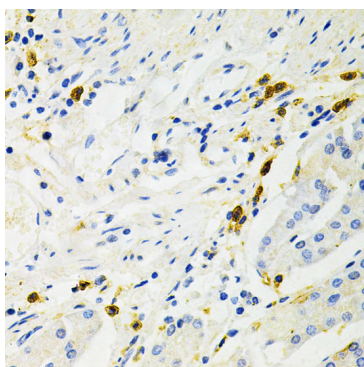
Secondary antibody: HRP Goat Anti-Rabbit IgG (H+L) (A5014) at 1:10000 dilution.

Lysates/proteins: 25ug per lane.

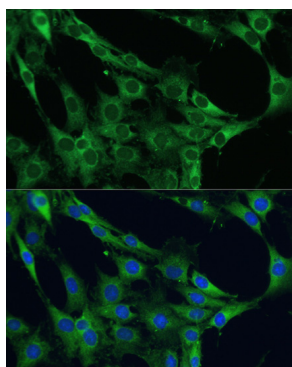
Blocking buffer: 3% nonfat dry milk in TBST.

Detection: ECL Basic Kit (RM00020).

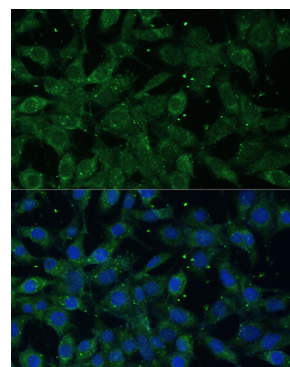
Exposure time: 180s.



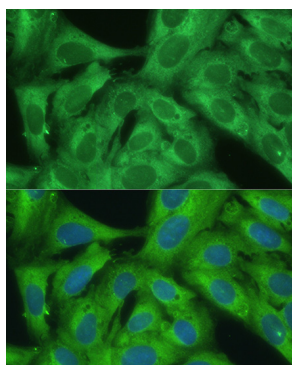
Immunohistochemistry of paraffin-embedded human stomach using NF-kB p65/RelA Antibody (A2547) at dilution of 1:200 (40x lens). Perform microwave antigen retrieval with 10 mM PBS buffer pH 7.2 before commencing with IHC staining protocol.



Immunofluorescence analysis of C6 cells using NF-kB p65/RelA antibody (A2547) at dilution of 1:100. Blue: DAPI for nuclear staining.



Immunofluorescence analysis of L929 cells using NF-kB p65/RelA antibody (A2547) at dilution of 1:100. Blue: DAPI for nuclear staining.



Immunofluorescence analysis of U2OS cells using NF-kB p65/RelA antibody (A2547) at dilution of 1:100. Blue: DAPI for nuclear staining.