

EIF1AY Rabbit pAb

Catalog No.: A4270

Basic Information

Observed MW

18kDa

Calculated MW

16kDa

Category

Primary antibody

Applications

WB,IHC

Cross-Reactivity

Human, Mouse, Rat

Background

This gene is located on the non-recombining region of the Y chromosome. It encodes a protein related to eukaryotic translation initiation factor 1A (EIF1A), which may function in stabilizing the binding of the initiator Met-tRNA to 40S ribosomal subunits. Alternative splicing results in multiple transcript variants.

Recommended Dilutions

WB	1:200 - 1:2000
IHC	1:50 - 1:200

Immunogen Information

Gene ID

9086

Swiss Prot

O14602

Immunogen

Recombinant fusion protein containing a sequence corresponding to amino acids 1-144 of human EIF1AY (NP_004672.2).

Synonyms

EIF1AY;eIF-4C;Y-linked

Contact

 | www.abclonal.com

Product Information

Source

Rabbit

Isotype

IgG

Purification

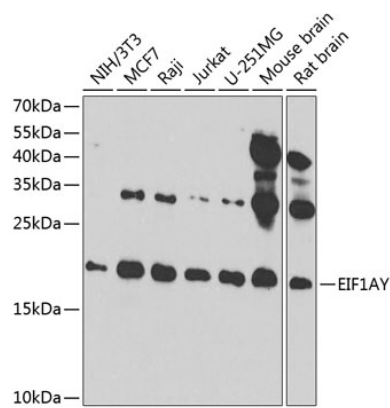
Affinity purification

Storage

Store at -20°C. Avoid freeze / thaw cycles.

Buffer: PBS with 0.02% sodium azide,50% glycerol,pH7.3.

Validation Data



Western blot analysis of extracts of various cell lines, using EIF1AY antibody (A4270) at 1:1000 dilution.
Secondary antibody: HRP Goat Anti-Rabbit IgG (H+L) (A5014) at 1:10000 dilution.
Lysates/proteins: 25ug per lane.
Blocking buffer: 3% nonfat dry milk in TBST.
Detection: ECL Enhanced Kit (RM00021).
Exposure time: 90s.