

SAT1 Rabbit pAb

Catalog No.: A2506

Basic Information

Observed MW

20kDa

Calculated MW

20kDa

Category

Primary antibody

Applications

WB

Cross-Reactivity

Human

Background

The protein encoded by this gene belongs to the acetyltransferase family, and is a rate-limiting enzyme in the catabolic pathway of polyamine metabolism. It catalyzes the acetylation of spermidine and spermine, and is involved in the regulation of the intracellular concentration of polyamines and their transport out of cells. Defects in this gene are associated with keratosis follicularis spinulosa decalvans (KFSD). Alternatively spliced transcripts have been found for this gene.

Recommended Dilutions

WB 1:500 - 1:2000

Immunogen Information

Gene ID

6303

Swiss Prot

P21673

Immunogen

Recombinant fusion protein containing a sequence corresponding to amino acids 1-171 of human SAT1 (NP_002961.1).

Synonyms

DC21;KFSD;KFSDX;SAT;SSAT;SSAT-1;SAT1

Contact

 | www.abclonal.com

Product Information

Source

Rabbit

Isotype

IgG

Purification

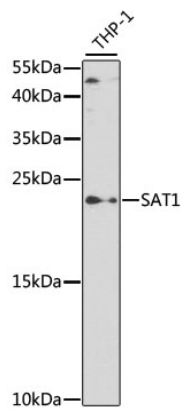
Affinity purification

Storage

Store at -20°C. Avoid freeze / thaw cycles.

Buffer: PBS with 0.05% proclin300,50% glycerol,pH7.3.

Validation Data



Western blot analysis of extracts of THP-1 cells, using SAT1 antibody (A2506) at 1:500 dilution.
Secondary antibody: HRP Goat Anti-Rabbit IgG (H+L) (A5014) at 1:10000 dilution.
Lysates/proteins: 25ug per lane.
Blocking buffer: 3% nonfat dry milk in TBST.
Detection: ECL Basic Kit (RM00020).
Exposure time: 90s.