

TOLLIP Rabbit pAb

Catalog No.: A2202 **2 Publications**

Basic Information

Observed MW

30KDa

Calculated MW

22kDa/30kDa

Category

Primary antibody

Applications

WB,IHC,IF/ICC

Cross-Reactivity

Human, Mouse, Rat

Background

This gene encodes a ubiquitin-binding protein that interacts with several Toll-like receptor (TLR) signaling cascade components. The encoded protein regulates inflammatory signaling and is involved in interleukin-1 receptor trafficking and in the turnover of IL1R-associated kinase. Several transcript variants encoding different isoforms have been found for this gene.

Recommended Dilutions

WB	1:500 - 1:2000
IHC	1:50 - 1:200
IF/ICC	1:50 - 1:200

Immunogen Information

Gene ID

54472

Swiss Prot

Q9H0E2

Immunogen

Recombinant fusion protein containing a sequence corresponding to amino acids 1-274 of human TOLLIP (NP_061882.2).

Synonyms

TOLLIP;IL-1RACPIP

Contact

 | www.abclonal.com

Product Information

Source

Rabbit

Isotype

IgG

Purification

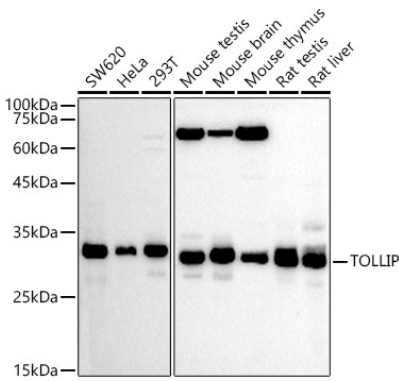
Affinity purification

Storage

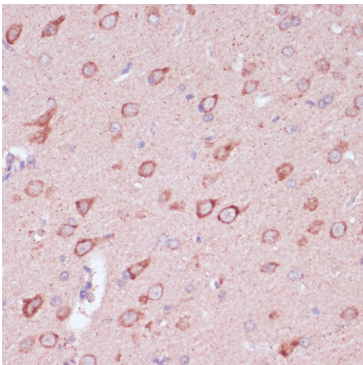
Store at -20°C. Avoid freeze / thaw cycles.

Buffer: PBS with 0.05% proclin300,50% glycerol,pH7.3.

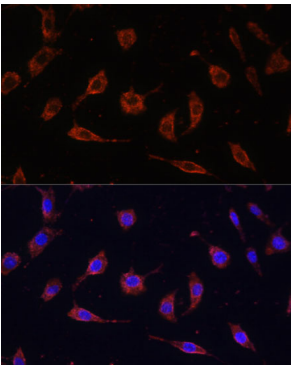
Validation Data



Western blot analysis of extracts of various cell lines, using TOLLIP Rabbit pAb antibody (A2202) at 1:500 dilution.
Secondary antibody: HRP Goat Anti-Rabbit IgG (H+L) (A5014) at 1:10000 dilution.
Lysates/proteins: 25ug per lane.
Blocking buffer: 3% nonfat dry milk in TBST.
Detection: ECL Basic Kit (RM00020).
Exposure time: 30s.



Immunohistochemistry of paraffin-embedded rat brain using TOLLIP antibody (A2202) at dilution of 1:100 (40x lens). Perform microwave antigen retrieval with 10 mM PBS buffer pH 7.2 before commencing with IHC staining protocol.



Immunofluorescence analysis of L929 cells using TOLLIP antibody (A2202) at dilution of 1:100. Blue: DAPI for nuclear staining.