

# TCP1 Rabbit pAb

Catalog No.: A1950 **1 Publications**

## Basic Information

### Observed MW

60kDa

### Calculated MW

60kDa

### Category

Primary antibody

### Applications

WB

### Cross-Reactivity

Human, Rat

## Background

The protein encoded by this gene is a molecular chaperone that is a member of the chaperonin containing TCP1 complex (CCT), also known as the TCP1 ring complex (TRiC). This complex consists of two identical stacked rings, each containing eight different proteins. Unfolded polypeptides enter the central cavity of the complex and are folded in an ATP-dependent manner. The complex folds various proteins, including actin and tubulin. Alternate transcriptional splice variants of this gene, encoding different isoforms, have been characterized. In addition, three pseudogenes that appear to be derived from this gene have been found.

## Recommended Dilutions

**WB** 1:500 - 1:2000

## Immunogen Information

### Gene ID

6950

### Swiss Prot

P17987

### Immunogen

Recombinant fusion protein containing a sequence corresponding to amino acids 307-556 of human TCP1 (NP\_110379.2).

### Synonyms

TCP1;CCT-alpha;CCT1;CCTa;D6S230E;TCP-1-alpha

## Contact

 | [www.abclonal.com](http://www.abclonal.com)

## Product Information

### Source

Rabbit

### Isotype

IgG

### Purification

Affinity purification

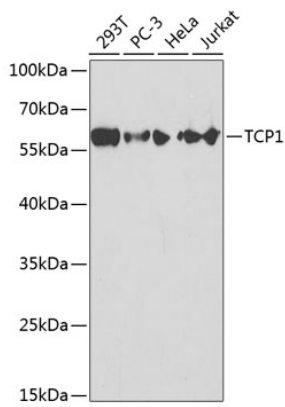
### Storage

Store at -20°C. Avoid freeze / thaw cycles.

Buffer: PBS with 0.02% sodium azide,50% glycerol,pH7.3.

## Validation Data

---



Western blot analysis of extracts of various cell lines, using TCP1 antibody (A1950) at 1:1000 dilution.  
Secondary antibody: HRP Goat Anti-Rabbit IgG (H+L) (AS014) at 1:10000 dilution.  
Lysates/proteins: 25ug per lane.  
Blocking buffer: 3% nonfat dry milk in TBST.