

EPHX2 Rabbit pAb

Catalog No.: A1885 **3 Publications**

Basic Information

Observed MW

63kDa

Calculated MW

55kDa/57kDa/62kDa

Category

Primary antibody

Applications

WB,IF/ICC

Cross-Reactivity

Human, Mouse, Rat

Background

This gene encodes a member of the epoxide hydrolase family. The protein, found in both the cytosol and peroxisomes, binds to specific epoxides and converts them to the corresponding dihydrodiols. Mutations in this gene have been associated with familial hypercholesterolemia. Alternatively spliced transcript variants have been described.

Recommended Dilutions

WB	1:500 - 1:2000
IF/ICC	1:50 - 1:200

Immunogen Information

Gene ID	Swiss Prot
2053	P34913

Immunogen

Recombinant fusion protein containing a sequence corresponding to amino acids 30-240 of human EPX2 (NP_001970.2).

Synonyms

EPHX2;CEH;SEH

Contact

 | www.abclonal.com

Product Information

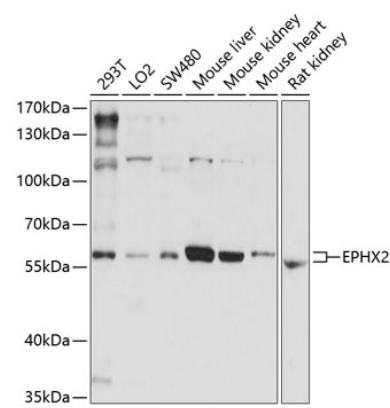
Source	Isotype	Purification
Rabbit	IgG	Affinity purification

Storage

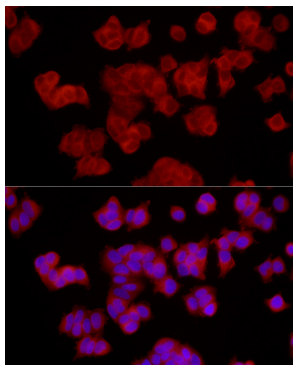
Store at -20°C. Avoid freeze / thaw cycles.

Buffer: PBS with 0.01% thiomersal,50% glycerol,pH7.3.

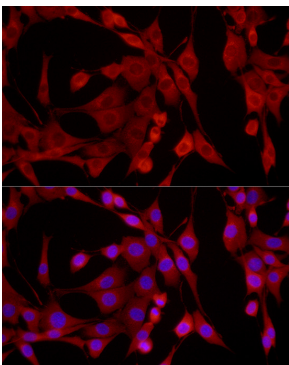
Validation Data



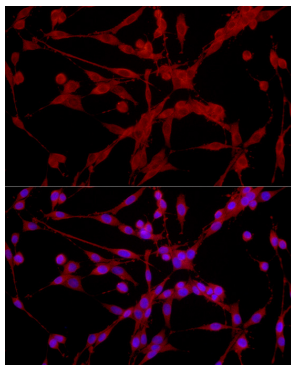
Western blot analysis of extracts of various cell lines, using EPHX2 antibody (A1885) at 1:1000 dilution.
Secondary antibody: HRP Goat Anti-Rabbit IgG (H+L) (A5014) at 1:10000 dilution.
Lysates/proteins: 25ug per lane.
Blocking buffer: 3% nonfat dry milk in TBST.
Detection: ECL Enhanced Kit (RM00021).
Exposure time: 30s.



Immunofluorescence analysis of MCF7 cells using EPHX2 Rabbit pAb (A1885) at dilution of 1:250 (40x lens). Blue: DAPI for nuclear staining.



Immunofluorescence analysis of NIH/3T3 cells using EPHX2 Rabbit pAb (A1885) at dilution of 1:250 (40x lens). Blue: DAPI for nuclear staining.



Immunofluorescence analysis of PC-12 cells using EPHX2 Rabbit pAb (A1885) at dilution of 1:250 (40x lens). Blue: DAPI for nuclear staining.