

GTF2B Rabbit pAb

Catalog No.: A1708 **1 Publications**

Basic Information

Observed MW

32KDa

Calculated MW

34kDa

Category

Primary antibody

Applications

WB, IHC, IF/ICC

Cross-Reactivity

Human, Mouse, Rat

Background

This gene encodes the general transcription factor IIB, one of the ubiquitous factors required for transcription initiation by RNA polymerase II. The protein localizes to the nucleus where it forms a complex (the DAB complex) with transcription factors IID and IIA. Transcription factor IIB serves as a bridge between IID, the factor which initially recognizes the promoter sequence, and RNA polymerase II.

Recommended Dilutions

WB	1:500 - 1:2000
IHC	1:50 - 1:200
IF/ICC	1:50 - 1:200

Immunogen Information

Gene ID	Swiss Prot
2959	Q00403

Immunogen

Recombinant fusion protein containing a sequence corresponding to amino acids 40-154 of GTF2B (NP_001505.1).

Synonyms

GTF2B;TF2B;TFIIB

Contact

 | www.abclonal.com

Product Information

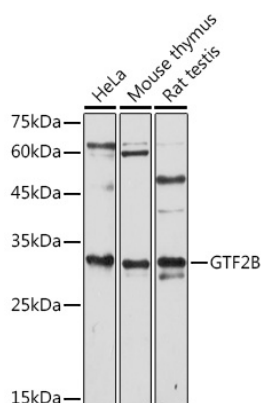
Source	Isotype	Purification
Rabbit	IgG	Affinity purification

Storage

Store at -20°C. Avoid freeze / thaw cycles.

Buffer: PBS with 0.01% thiomersal, 50% glycerol, pH7.3.

Validation Data



Western blot analysis of extracts of various cell lines, using GTF2B antibody (A1708) at 1:1000 dilution.

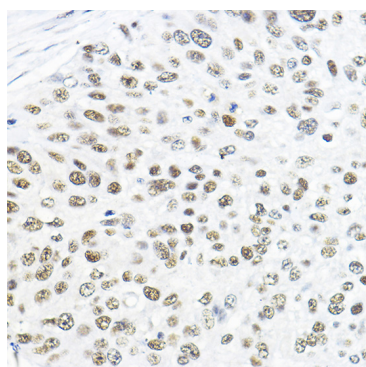
Secondary antibody: HRP Goat Anti-Rabbit IgG (H+L) (A5014) at 1:10000 dilution.

Lysates/proteins: 25ug per lane.

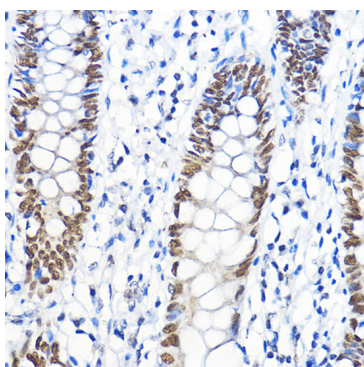
Blocking buffer: 3% nonfat dry milk in TBST.

Detection: ECL Enhanced Kit (RM00021).

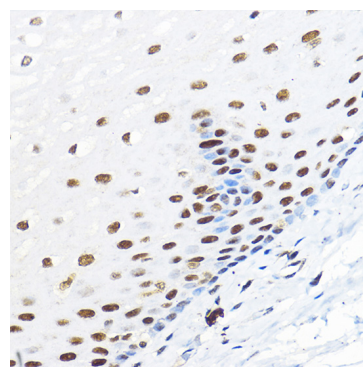
Exposure time: 180s.



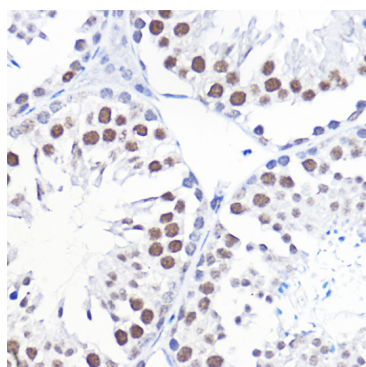
Immunohistochemistry of paraffin-embedded human lung cancer using GTF2B Rabbit pAb (A1708) at dilution of 1:100 (40x lens).



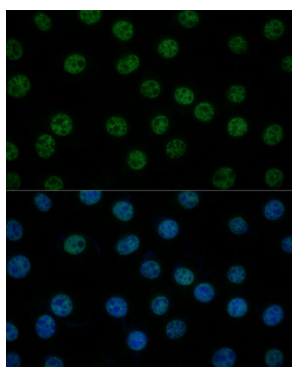
Immunohistochemistry of paraffin-embedded human colon using GTF2B Rabbit pAb (A1708) at dilution of 1:100 (40x lens).



Immunohistochemistry of paraffin-embedded human esophageal using GTF2B Rabbit pAb (A1708) at dilution of 1:100 (40x lens).



Immunohistochemistry of paraffin-embedded mouse testis using GTF2B Rabbit pAb (A1708) at dilution of 1:100 (40x lens).



Immunofluorescence analysis of L929 cells using GTF2B Polyclonal Antibody (A1708) at dilution of 1:100 (40x lens). Blue: DAPI for nuclear staining.