

# RPS6KA2 Rabbit pAb

Catalog No.: A16305 **1 Publications**

## Basic Information

**Observed MW**

83kDa

**Calculated MW**

83kDa

**Category**

Primary antibody

**Applications**

WB, IHC, IF/ICC

**Cross-Reactivity**

Human, Mouse, Rat

## Background

This gene encodes a member of the RSK (ribosomal S6 kinase) family of serine/threonine kinases. This kinase contains two non-identical kinase catalytic domains and phosphorylates various substrates, including members of the mitogen-activated kinase (MAPK) signalling pathway. The activity of this protein has been implicated in controlling cell growth and differentiation. Alternative splice variants, encoding different isoforms, have been characterized.

## Recommended Dilutions

<b>WB</b>	1:500 - 1:2000
<b>IHC</b>	1:100 - 1:200
<b>IF/ICC</b>	1:50 - 1:200

## Immunogen Information

**Gene ID**

6196

**Swiss Prot**

Q15349

**Immunogen**

Recombinant fusion protein containing a sequence corresponding to amino acids 632-733 of human RPS6KA2 (NP\_066958.2).

**Synonyms**

RPS6KA2; HU-2; MAPKAPK1C; RSK; RSK3; S6K-alpha; S6K-alpha2; p90-RSK3; p90RSK2; pp90RSK3

## Contact

 | [www.abclonal.com](http://www.abclonal.com)

## Product Information

**Source**

Rabbit

**Isotype**

IgG

**Purification**

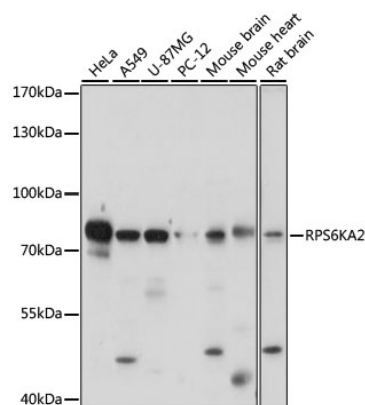
Affinity purification

**Storage**

Store at -20°C. Avoid freeze / thaw cycles.

Buffer: PBS with 0.01% thiomersal, 50% glycerol, pH7.3.

## Validation Data



Western blot analysis of extracts of various cell lines, using RPS6KA2 antibody (A16305) at 1:1000 dilution.

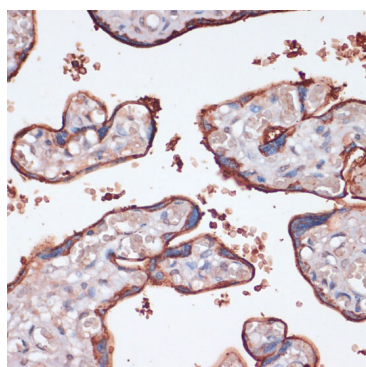
Secondary antibody: HRP Goat Anti-Rabbit IgG (H+L) (A5014) at 1:10000 dilution.

Lysates/proteins: 25ug per lane.

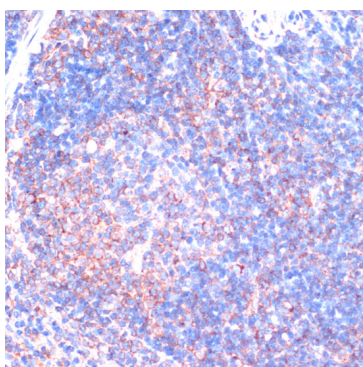
Blocking buffer: 3% nonfat dry milk in TBST.

Detection: ECL Basic Kit (RM00020).

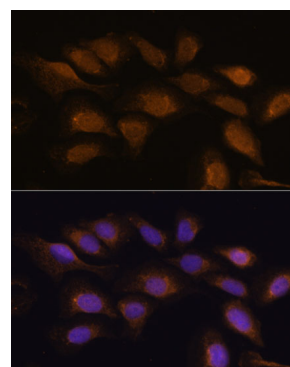
Exposure time: 30s.



Immunohistochemistry of paraffin-embedded human placenta using RPS6KA2 antibody (A16305) at dilution of 1:100 (40x lens). Perform microwave antigen retrieval with 10 mM PBS buffer pH 7.2 before commencing with IHC staining protocol.



Immunohistochemistry of paraffin-embedded mouse spleen using RPS6KA2 antibody (A16305) at dilution of 1:100 (40x lens). Perform microwave antigen retrieval with 10 mM PBS buffer pH 7.2 before commencing with IHC staining protocol.



Immunofluorescence analysis of U-2 OS cells using RPS6KA2 antibody (A16305) at dilution of 1:100. Blue: DAPI for nuclear staining.