

# TAP2 Rabbit pAb

Catalog No.: A1610 **1 Publications**

## Basic Information

**Observed MW**

75KDa

**Calculated MW**

72kDa/75kDa

**Category**

Primary antibody

**Applications**

WB,IHC,IF/ICC

**Cross-Reactivity**

Human, Mouse, Rat

## Background

The membrane-associated protein encoded by this gene is a member of the superfamily of ATP-binding cassette (ABC) transporters. ABC proteins transport various molecules across extra- and intra-cellular membranes. ABC genes are divided into seven distinct subfamilies (ABC1, MDR/TAP, MRP, ALD, OABP, GCN20, White). This protein is a member of the MDR/TAP subfamily. Members of the MDR/TAP subfamily are involved in multidrug resistance. This gene is located 7 kb telomeric to gene family member ABCB2. The protein encoded by this gene is involved in antigen presentation. This protein forms a heterodimer with ABCB2 in order to transport peptides from the cytoplasm to the endoplasmic reticulum. Mutations in this gene may be associated with ankylosing spondylitis, insulin-dependent diabetes mellitus, and celiac disease. Alternative splicing of this gene produces products which differ in peptide selectivity and level of restoration of surface expression of MHC class I molecules.

## Recommended Dilutions

<b>WB</b>	1:500 - 1:2000
<b>IHC</b>	1:50 - 1:200
<b>IF/ICC</b>	1:50 - 1:200

## Immunogen Information

<b>Gene ID</b>	<b>Swiss Prot</b>
6891	Q03519

**Immunogen**

Recombinant fusion protein containing a sequence corresponding to amino acids 450-686 of human TAP2 (NP\_001276972.1).

**Synonyms**

TAP2;ABC18;ABCB3;APT2;D6S217E;PSF-2;PSF2;RING11

## Contact

 | [www.abclonal.com](http://www.abclonal.com)

## Product Information

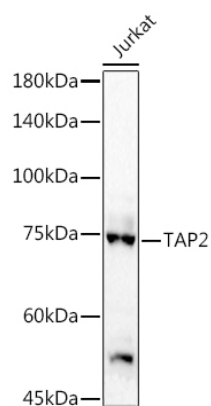
<b>Source</b>	<b>Isotype</b>	<b>Purification</b>
Rabbit	IgG	Affinity purification

**Storage**

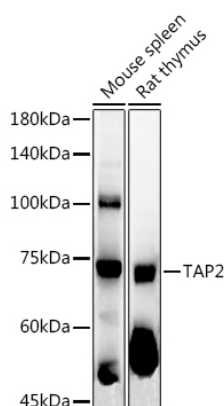
Store at -20°C. Avoid freeze / thaw cycles.

Buffer: PBS with 0.05% proclin300,50% glycerol,pH7.3.

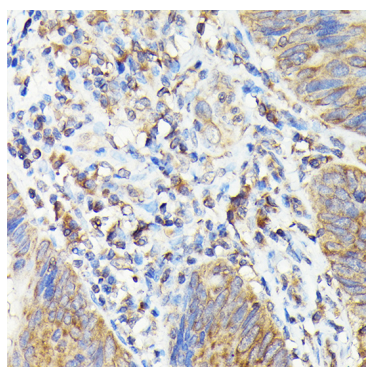
## Validation Data



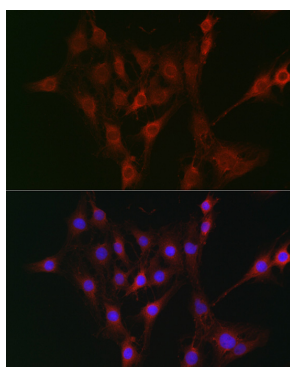
Western blot analysis of extracts of Jurkat cells, using TAP2 antibody (A1610) at 1:1000 dilution.  
Secondary antibody: HRP Goat Anti-Rabbit IgG (H+L) (AS014) at 1:10000 dilution.  
Lysates/proteins: 25ug per lane.  
Blocking buffer: 3% nonfat dry milk in TBST.  
Detection: ECL Basic Kit (RM00020).  
Exposure time: 180s.



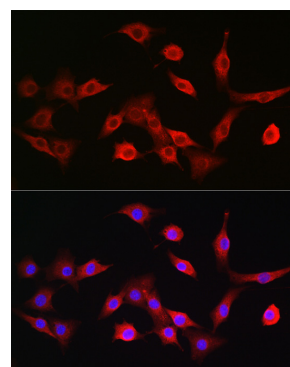
Western blot analysis of extracts of various cell lines, using TAP2 antibody (A1610) at 1:1000 dilution.  
Secondary antibody: HRP Goat Anti-Rabbit IgG (H+L) (AS014) at 1:10000 dilution.  
Lysates/proteins: 25ug per lane.  
Blocking buffer: 3% nonfat dry milk in TBST.  
Detection: ECL Enhanced Kit (RM00021).  
Exposure time: 180s.



Immunohistochemistry of paraffin-embedded human colon carcinoma using TAP2 Rabbit pAb (A1610) at dilution of 1:100 (40x lens). Perform high pressure antigen retrieval with 10 mM citrate buffer pH 6.0 before commencing with IHC staining protocol.



Immunofluorescence analysis of C6 cells using TAP2 Rabbit pAb (A1610) at dilution of 1:100 (40x lens). Blue: DAPI for nuclear staining.



Immunofluorescence analysis of NIH/3T3 cells using TAP2 Rabbit pAb (A1610) at dilution of 1:100 (40x lens). Blue: DAPI for nuclear staining.