

Phospho-Connexin 43-S368 Rabbit pAb

Catalog No.: AP0876

Basic Information

Observed MW

Refer to figures

Calculated MW

43kDa

Category

Primary antibody

Applications

IHC

Cross-Reactivity

Mouse, Rat

Background

This gene is a member of the connexin gene family. The encoded protein is a component of gap junctions, which are composed of arrays of intercellular channels that provide a route for the diffusion of low molecular weight materials from cell to cell. The encoded protein is the major protein of gap junctions in the heart that are thought to have a crucial role in the synchronized contraction of the heart and in embryonic development. A related intronless pseudogene has been mapped to chromosome 5. Mutations in this gene have been associated with oculodentodigital dysplasia, autosomal recessive craniometaphyseal dysplasia and heart malformations.

Recommended Dilutions

IHC 1:50 - 1:200

Immunogen Information

Gene ID

2697

Swiss Prot

P17302

Immunogen

A synthetic phosphorylated peptide around S368 of human GJA1 (NP_000156.1).

Synonyms

GJA1;AVSD3;CMDR;CX43;EKVP;GJAL;HLHS1;HSS;ODDD;PPKCA;EKVP3

Contact

 | www.abclonal.com

Product Information

Source

Rabbit

Isotype

IgG

Purification

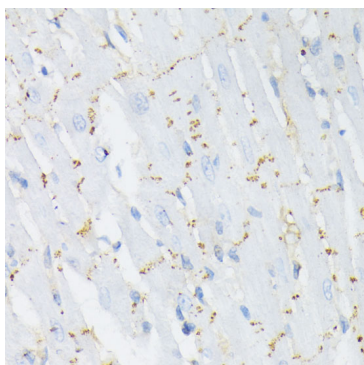
Affinity purification

Storage

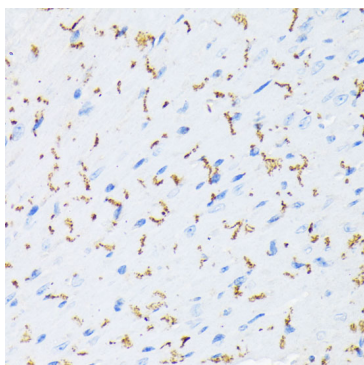
Store at -20°C. Avoid freeze / thaw cycles.

Buffer: PBS with 0.01% thiomersal, 50% glycerol, pH7.3.

Validation Data



Immunohistochemistry of paraffin-embedded rat heart using Phospho-Connexin 43-S368 antibody (AP0876) at dilution of 1:200 (40x lens). Perform microwave antigen retrieval with 10 mM Tris/EDTA buffer pH 9.0 before commencing with IHC staining protocol.



Immunohistochemistry of paraffin-embedded mouse heart using Phospho-Connexin 43-S368 antibody (AP0876) at dilution of 1:200 (40x lens). Perform microwave antigen retrieval with 10 mM Tris/EDTA buffer pH 9.0 before commencing with IHC staining protocol.