

Phospho-Smad3-S423/S425 Rabbit mAb

Catalog No.: AP0727 **Recombinant** **17 Publications**

Basic Information

Observed MW

55KDa

Calculated MW

48kDa

Category

Primary antibody

Applications

WB,IHC

Cross-Reactivity

Human, Mouse, Rat

CloneNo number

ARC0170

Background

The protein encoded by this gene belongs to the SMAD, a family of proteins similar to the gene products of the Drosophila gene 'mothers against decapentaplegic' (Mad) and the C. elegans gene Sma. SMAD proteins are signal transducers and transcriptional modulators that mediate multiple signaling pathways. This protein functions as a transcriptional modulator activated by transforming growth factor-beta and is thought to play a role in the regulation of carcinogenesis. [provided by RefSeq, Apr 2009]

Recommended Dilutions

WB	1:500 - 1:2000
IHC	1:50 - 1:200

Immunogen Information

Gene ID	Swiss Prot
4088	P84022


Immunogen

A synthetic phosphorylated peptide around S423 & S425 of human Smad3 (P84022).

Synonyms

HSPC193;HsT17436;JV15-2;LDS1C;LDS3;MADH3;SMAD3

Contact

 | www.abclonal.com

Product Information

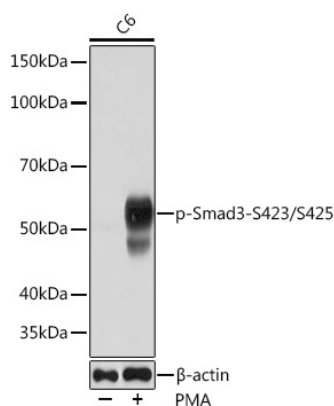
Source	Isotype	Purification
Rabbit	IgG	Affinity purification

Storage

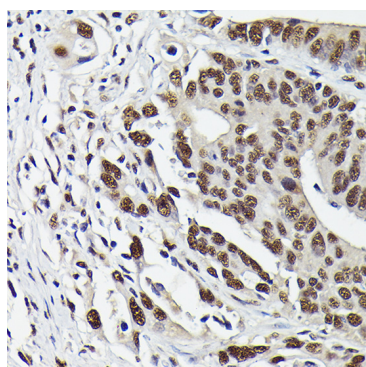
Store at -20°C. Avoid freeze / thaw cycles.

Buffer: PBS with 0.01% thiomersal,0.05% BSA,50% glycerol,pH7.3.

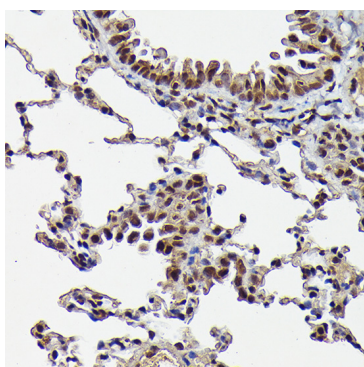
Validation Data



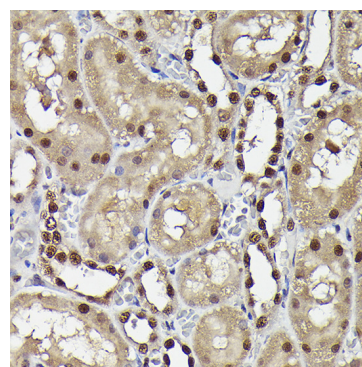
Western blot analysis of extracts of C6 cells, using Phospho-Smad3-S423/S425 Rabbit mAb (AP0727) at 1:1000 dilution. C6 cells were treated by PMA/TPA (200 nM) at 37°C for 10 minutes. Secondary antibody: HRP Goat Anti-Rabbit IgG (H+L) (AS014) at 1:10000 dilution. Lysates/proteins: 25ug per lane. Blocking buffer: 3% nonfat dry milk in TBST. Detection: ECL Basic Kit (RM00020). Exposure time: 60s.



Immunohistochemistry of paraffin-embedded human colon carcinoma using Phospho-Smad3-S423/S425 Rabbit mAb (AP0727) at dilution of 1:50 (40x lens). Perform high pressure antigen retrieval with 10 mM citrate buffer pH 6.0 before commencing with IHC staining protocol.



Immunohistochemistry of paraffin-embedded mouse lung using Phospho-Smad3-S423/S425 Rabbit mAb (AP0727) at dilution of 1:50 (40x lens). Perform high pressure antigen retrieval with 10 mM citrate buffer pH 6.0 before commencing with IHC staining protocol.



Immunohistochemistry of paraffin-embedded rat kidney using Phospho-Smad3-S423/S425 Rabbit mAb (AP0727) at dilution of 1:50 (40x lens). Perform high pressure antigen retrieval with 10 mM citrate buffer pH 6.0 before commencing with IHC staining protocol.