

# Phospho-ATR-S428 Rabbit pAb

Catalog No.: AP0676 **3 Publications**

## Basic Information

### Observed MW

300kDa

### Calculated MW

294kDa/297kDa/301kDa

### Category

Primary antibody

### Applications

WB,IHC,IF/ICC

### Cross-Reactivity

Human, Mouse, Rat

## Background

The protein encoded by this gene belongs the PI3/PI4-kinase family, and is most closely related to ATM, a protein kinase encoded by the gene mutated in ataxia telangiectasia. This protein and ATM share similarity with Schizosaccharomyces pombe rad3, a cell cycle checkpoint gene required for cell cycle arrest and DNA damage repair in response to DNA damage. This kinase has been shown to phosphorylate checkpoint kinase CHK1, checkpoint proteins RAD17, and RAD9, as well as tumor suppressor protein BRCA1. Mutations of this gene are associated with Seckel syndrome. An alternatively spliced transcript variant of this gene has been reported, however, its full length nature is not known. Transcript variants utilizing alternative polyA sites exist.

## Recommended Dilutions

<b>WB</b>	1:500 - 1:2000
<b>IHC</b>	1:50 - 1:200
<b>IF/ICC</b>	1:50 - 1:200

## Immunogen Information

<b>Gene ID</b>	<b>Swiss Prot</b>
545	Q13535

### Immunogen

A synthetic phosphorylated peptide around S428 of human ATR (NP\_001175.2).

### Synonyms

ATR;FCTCS;FRP1;MEC1;SCKL;SCKL1

## Contact

 | [www.abclonal.com](http://www.abclonal.com)

## Product Information

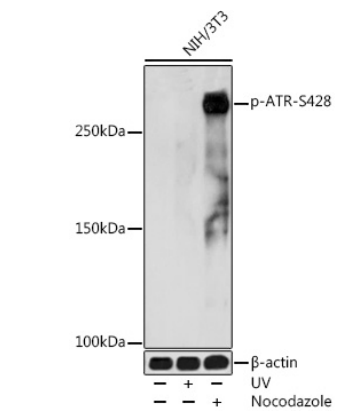
<b>Source</b>	<b>Isotype</b>	<b>Purification</b>
Rabbit	IgG	Affinity purification

### Storage

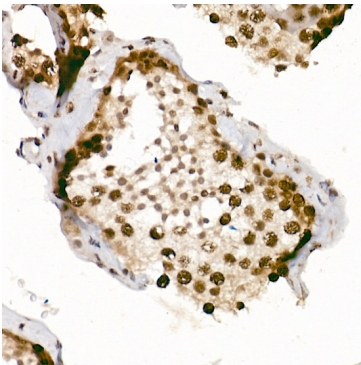
Store at -20°C. Avoid freeze / thaw cycles.

Buffer: PBS with 0.02% sodium azide,50% glycerol,pH7.3.

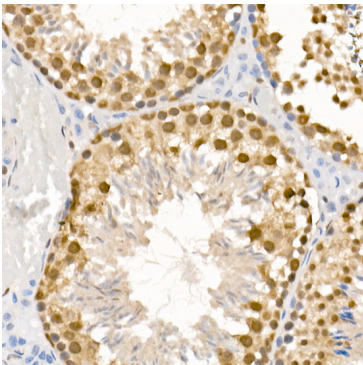
Validation Data



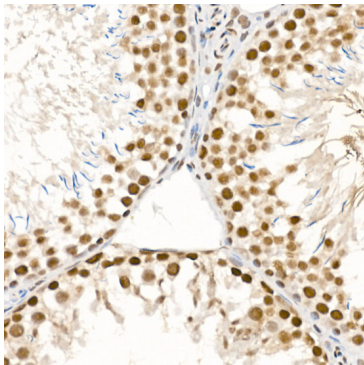
Western blot analysis of extracts of NIH/3T3 cells, using Phospho-ATR-S428 antibody (AP0676) at 1:1000 dilution. NIH/3T3 cells were treated by UV at room temperature for 15-30 minutes. NIH/3T3 cells were treated by Nocodazole (50 ng/ml) at 37°C for 20 hours. Secondary antibody: HRP Goat Anti-Rabbit IgG (H+L) (AS014) at 1:10000 dilution. Lysates/proteins: 25ug per lane. Blocking buffer: 3% nonfat dry milk in TBST. Detection: ECL Basic Kit (RM00020). Exposure time: 30s.



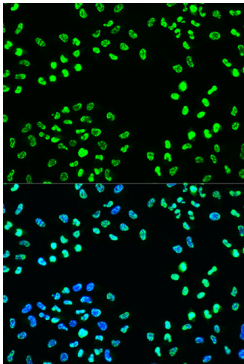
Immunohistochemistry of paraffin-embedded human testis using Phospho-ATR-S428 Rabbit pAb (AP0676) at dilution of 1:100 (40x lens). Perform high pressure antigen retrieval with 10 mM citrate buffer pH 6.0 before commencing with IHC staining protocol.



Immunohistochemistry of paraffin-embedded mouse testis using Phospho-ATR-S428 Rabbit pAb (AP0676) at dilution of 1:100 (40x lens). Perform high pressure antigen retrieval with 10 mM citrate buffer pH 6.0 before commencing with IHC staining protocol.



Immunohistochemistry of paraffin-embedded rat testis using Phospho-ATR-S428 Rabbit pAb (AP0676) at dilution of 1:100 (40x lens). Perform high pressure antigen retrieval with 10 mM citrate buffer pH 6.0 before commencing with IHC staining protocol.



Immunofluorescence analysis of U2OS cells using Phospho-ATR-S428 antibody (AP0676) at dilution of 1:100. Blue: DAPI for nuclear staining.