

# **PLOD1 Rabbit pAb**

**Catalog No.: A7919**

## **Basic Information**

### **Observed MW**

84KDa

### **Calculated MW**

83kDa/88kDa

### **Category**

Primary antibody

### **Applications**

WB

### **Cross-Reactivity**

Human, Mouse, Rat

## **Background**

Lysyl hydroxylase is a membrane-bound homodimeric protein localized to the cisternae of the endoplasmic reticulum. The enzyme (cofactors iron and ascorbate) catalyzes the hydroxylation of lysyl residues in collagen-like peptides. The resultant hydroxylysyl groups are attachment sites for carbohydrates in collagen and thus are critical for the stability of intermolecular crosslinks. Some patients with Ehlers-Danlos syndrome type VI have deficiencies in lysyl hydroxylase activity. Two transcript variants encoding different isoforms have been found for this gene.

## **Recommended Dilutions**

**WB** 1:500 - 1:2000

## **Immunogen Information**

### **Gene ID**

5351

### **Swiss Prot**

Q02809

### **Immunogen**

Recombinant fusion protein containing a sequence corresponding to amino acids 19-295 of human PLOD1 (NP\_000293.2).

### **Synonyms**

PLOD1;EDS6;LH;LH1;LLH;PLOD

## **Contact**

 | [www.abclonal.com](http://www.abclonal.com)

## **Product Information**

### **Source**

Rabbit

### **Isotype**

IgG

### **Purification**

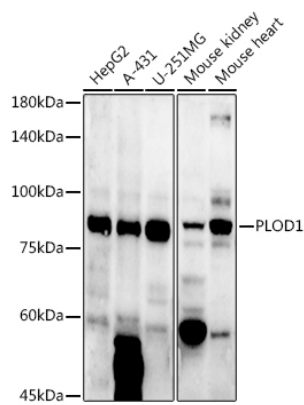
Affinity purification

### **Storage**

Store at -20°C. Avoid freeze / thaw cycles.

Buffer: PBS with 0.05% proclin300,50% glycerol,pH7.3.

# Validation Data



Western blot analysis of extracts of various cell lines, using PLD1 antibody (A7919) at 1:1000 dilution.  
Secondary antibody: HRP Goat Anti-Rabbit IgG (H+L) (A5014) at 1:10000 dilution.  
Lysates/proteins: 25ug per lane.  
Blocking buffer: 3% nonfat dry milk in TBST.  
Detection: ECL Enhanced Kit (RM00021).  
Exposure time: 180s.