

RPL26L1 Rabbit pAb

Catalog No.: A9192

Basic Information

Observed MW

20kDa

Calculated MW

17kDa

Category

Primary antibody

Applications

WB

Cross-Reactivity

Human

Background

This gene encodes a protein that shares high sequence similarity with ribosomal protein L26. Alternative splicing results in multiple transcript variants encoding the same protein.

Recommended Dilutions

WB 1:200 - 1:2000

Immunogen Information

Gene ID

51121

Swiss Prot

Q9UNX3

Immunogen

Recombinant fusion protein containing a sequence corresponding to amino acids 1-145 of human RPL26L1 (NP_057177.1).

Synonyms

RPL26L1;RPL26P1

Contact

 | www.abclonal.com

Product Information

Source

Rabbit

Isotype

IgG

Purification

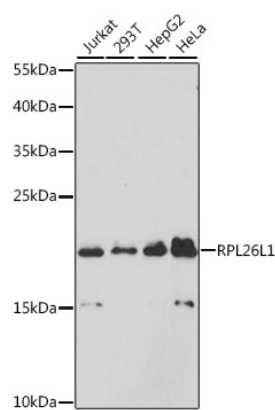
Affinity purification

Storage

Store at -20°C. Avoid freeze / thaw cycles.

Buffer: PBS with 0.01% thiomersal, 50% glycerol, pH7.3.

Validation Data



Western blot analysis of extracts of various cell lines, using RPL26L1 antibody (A9192) at 1:3000 dilution.
Secondary antibody: HRP Goat Anti-Rabbit IgG (H+L) (A5014) at 1:10000 dilution.
Lysates/proteins: 25ug per lane.
Blocking buffer: 3% nonfat dry milk in TBST.
Detection: ECL Enhanced Kit (RM00021).
Exposure time: 90s.