

# SEMA4C Rabbit pAb

Catalog No.: A8225

## Basic Information

---

### Observed MW

110kDa

### Calculated MW

92kDa

### Category

Primary antibody

### Applications

WB

### Cross-Reactivity

Human, Mouse

## Background

---

Cell surface receptor for PLXNB2 that plays an important role in cell-cell signaling. PLXNB2 binding promotes downstream activation of RHOA and phosphorylation of ERBB2 at 'Tyr-1248'. Required for normal brain development, axon guidance and cell migration (By similarity. Probable signaling receptor which may play a role in myogenic differentiation through activation of the stress-activated MAPK cascade.

## Recommended Dilutions

---

WB 1:500 - 1:2000

## Immunogen Information

---

### Gene ID

54910

### Swiss Prot

Q9C0C4

### Immunogen

Recombinant fusion protein containing a sequence corresponding to amino acids 749-833 of human SEMA4C (NP\_060259.4).

### Synonyms

SEMA4C;M-SEMA-F;SEMACL1;SEMAF;SEMAI

## Contact

---



[www.abclonal.com](http://www.abclonal.com)

## Product Information

---

### Source

Rabbit

### Isotype

IgG

### Purification

Affinity purification

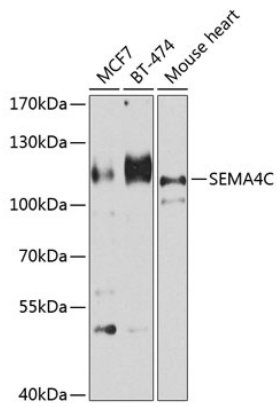
### Storage

Store at -20°C. Avoid freeze / thaw cycles.

Buffer: PBS with 0.02% sodium azide,50% glycerol,pH7.3.

## Validation Data

---



Western blot analysis of extracts of various cell lines, using SEMA4C antibody (A8225) at 1:1000 dilution.

Secondary antibody: HRP Goat Anti-Rabbit IgG (H+L) (AS014) at 1:10000 dilution.

Lysates/proteins: 25ug per lane.

Blocking buffer: 3% nonfat dry milk in TBST.

Detection: ECL Basic Kit (RM00020).

Exposure time: 90s.