

HOXB5 Rabbit pAb

Catalog No.: A8123

Basic Information

Observed MW

29kDa

Calculated MW

29kDa

Category

Primary antibody

Applications

WB,IF/ICC

Cross-Reactivity

Human, Mouse, Rat

Background

This gene is a member of the Antp homeobox family and encodes a nuclear protein with a homeobox DNA-binding domain. It is included in a cluster of homeobox B genes located on chromosome 17. The encoded protein functions as a sequence-specific transcription factor that is involved in lung and gut development. Increased expression of this gene is associated with a distinct biologic subset of acute myeloid leukemia (AML) and the occurrence of bronchopulmonary sequestration (BPS) and congenital cystic adenomatoid malformation (CCAM) tissue.

Recommended Dilutions

WB	1:500 - 1:2000
IF/ICC	1:50 - 1:200

Immunogen Information

Gene ID

3215

Swiss Prot

P09067

Immunogen

A synthetic peptide corresponding to a sequence within amino acids 170-269 of human HOXB5 (NP_002138.1).

Synonyms

HOXB5;HHO.C10;HOX2;HOX2A;HU-1;Hox2.1

Contact

 | www.abclonal.com

Product Information

Source

Rabbit

Isotype

IgG

Purification

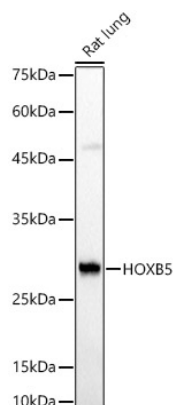
Affinity purification

Storage

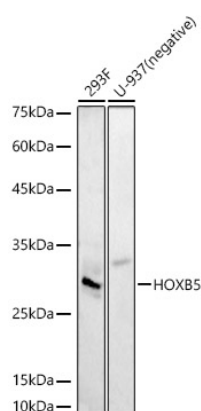
Store at -20°C. Avoid freeze / thaw cycles.

Buffer: PBS with 0.02% sodium azide,50% glycerol,pH7.3.

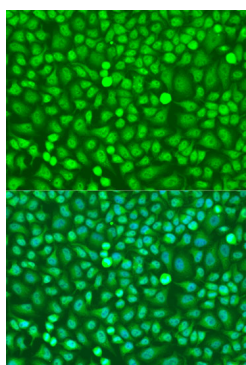
Validation Data



Western blot analysis of extracts of Rat lung, using HOXB5 antibody (A8123) at 1:510 dilution.
Secondary antibody: HRP Goat Anti-Rabbit IgG (H+L) (AS014) at 1:10000 dilution.
Lysates/proteins: 25ug per lane.
Blocking buffer: 3% nonfat dry milk in TBST.
Detection: ECL Basic Kit (RM00020).
Exposure time: 0.2s.



Western blot analysis of extracts of various cell lines, using HOXB5 antibody (A8123) at 1:510 dilution.
Secondary antibody: HRP Goat Anti-Rabbit IgG (H+L) (AS014) at 1:10000 dilution.
Lysates/proteins: 25ug per lane.
Blocking buffer: 3% nonfat dry milk in TBST.
Detection: ECL Basic Kit (RM00020).
Exposure time: 30s.



Immunofluorescence analysis of U2OS cells using HOXB5 antibody (A8123) at dilution of 1:100. Blue: DAPI for nuclear staining.