

IDH2 Rabbit pAb

Catalog No.: A7190 **2 Publications**

Basic Information

Observed MW

51kDa

Calculated MW

45kDa/50kDa

Category

Primary antibody

Applications

WB,IF/ICC,IP,ChIP

Cross-Reactivity

Human, Mouse, Rat

Background

Isocitrate dehydrogenases catalyze the oxidative decarboxylation of isocitrate to 2-oxoglutarate. These enzymes belong to two distinct subclasses, one of which utilizes NAD(+) as the electron acceptor and the other NADP(+). Five isocitrate dehydrogenases have been reported: three NAD(+)-dependent isocitrate dehydrogenases, which localize to the mitochondrial matrix, and two NADP(+)-dependent isocitrate dehydrogenases, one of which is mitochondrial and the other predominantly cytosolic. Each NADP(+)-dependent isozyme is a homodimer. The protein encoded by this gene is the NADP(+)-dependent isocitrate dehydrogenase found in the mitochondria. It plays a role in intermediary metabolism and energy production. This protein may tightly associate or interact with the pyruvate dehydrogenase complex. Alternative splicing results in multiple transcript variants.

Recommended Dilutions

WB	1:500 - 1:2000
IF/ICC	1:20 - 1:50
IP	1:50 - 1:200
ChIP	1:20 - 1:100

Immunogen Information

Gene ID

3418

Swiss Prot

P48735

Immunogen

Recombinant fusion protein containing a sequence corresponding to amino acids 193-452 of human IDH2 (NP_002159.2).

Synonyms

IDH2;D2HGA2;ICD-M;IDH;IDHM;IDP;IDPM;mNADP-IDH

Contact

 | www.abclonal.com

Product Information

Source

Rabbit

Isotype

IgG

Purification

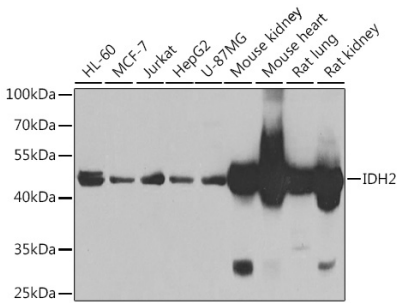
Affinity purification

Storage

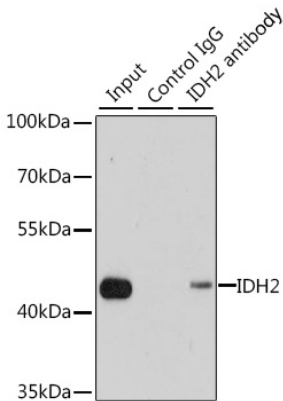
Store at -20°C. Avoid freeze / thaw cycles.

Buffer: PBS with 0.01% thiomersal, 50% glycerol, pH7.3.

Validation Data



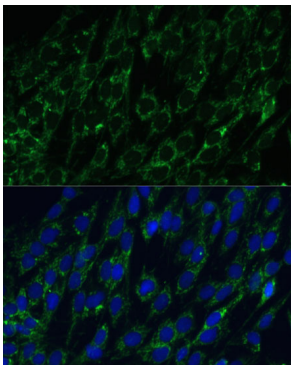
Western blot analysis of extracts of various cell lines, using IDH2 antibody (A7190) at 1:1000 dilution.
Secondary antibody: HRP Goat Anti-Rabbit IgG (H+L) (AS014) at 1:10000 dilution.
Lysates/proteins: 25ug per lane.
Blocking buffer: 3% nonfat dry milk in TBST.
Detection: ECL Basic Kit (RM00020).
Exposure time: 90s.



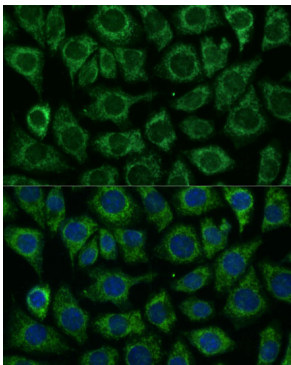
Immunoprecipitation analysis of 200ug extracts of MCF7 cells using 1ug IDH2 antibody (A7190).
Western blot was performed from the immunoprecipitate using IDH2 antibody (A7190) at a dilution of 1:1000.



Chromatin immunoprecipitation of extracts of 293T cell line, using IDH2 antibody (A7190) and rabbit IgG. The amount of immunoprecipitated DNA was checked by quantitative PCR. Histogram was constructed by the ratios of the immunoprecipitated DNA to the input.



Immunofluorescence analysis of C6 cells using IDH2 antibody (A7190) at dilution of 1:100. Blue: DAPI for nuclear staining.



Immunofluorescence analysis of L929 cells using IDH2 antibody (A7190) at dilution of 1:100. Blue: DAPI for nuclear staining.