

# ZWINT Rabbit pAb

Catalog No.: A6328

## Basic Information

### Observed MW

39kDa

### Calculated MW

25kDa/31kDa

### Category

Primary antibody

### Applications

WB, IF/ICC

### Cross-Reactivity

Human, Mouse, Rat

## Background

This gene encodes a protein that is clearly involved in kinetochore function although an exact role is not known. It interacts with ZW10, another kinetochore protein, possibly regulating the association between ZW10 and kinetochores. The encoded protein localizes to prophase kinetochores before ZW10 does and it remains detectable on the kinetochore until late anaphase. It has a uniform distribution in the cytoplasm of interphase cells. Alternatively spliced transcript variants encoding different isoforms have been found for this gene.

## Recommended Dilutions

<b>WB</b>	1:500 - 1:2000
<b>IF/ICC</b>	1:50 - 1:200

## Immunogen Information

<b>Gene ID</b>	<b>Swiss Prot</b>
11130	O95229

### Immunogen

Recombinant fusion protein containing a sequence corresponding to amino acids 1-277 of human ZWINT (NP\_008988.2).

### Synonyms

ZWINT;HZwint-1;KNTC2AP;SIP30;ZWINT1

## Contact

 | [www.abclonal.com](http://www.abclonal.com)

## Product Information

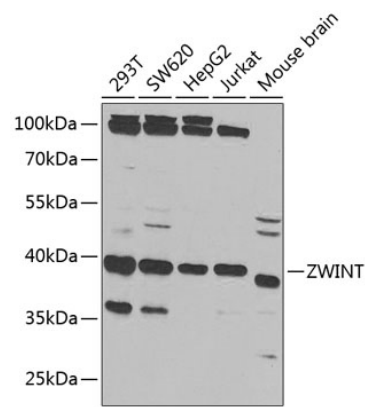
<b>Source</b>	<b>Isotype</b>	<b>Purification</b>
Rabbit	IgG	Affinity purification

### Storage

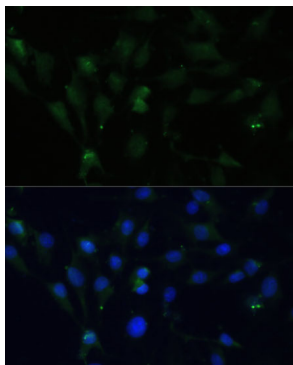
Store at -20°C. Avoid freeze / thaw cycles.

Buffer: PBS with 0.02% sodium azide, 50% glycerol, pH7.3.

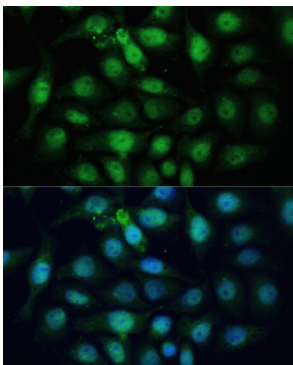
Validation Data



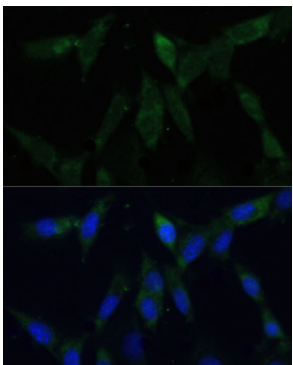
Western blot analysis of extracts of various cell lines, using ZWINT antibody (A6328) at 1:1000 dilution.  
Secondary antibody: HRP Goat Anti-Rabbit IgG (H+L) (A5014) at 1:10000 dilution.  
Lysates/proteins: 25ug per lane.  
Blocking buffer: 3% nonfat dry milk in TBST.



Immunofluorescence analysis of C6 cells using ZWINT Polyclonal Antibody (A6328) at dilution of 1:100 (40x lens). Blue: DAPI for nuclear staining.



Immunofluorescence analysis of HeLa cells using ZWINT Polyclonal Antibody (A6328) at dilution of 1:100 (40x lens). Blue: DAPI for nuclear staining.



Immunofluorescence analysis of NIH-3T3 cells using ZWINT Polyclonal Antibody (A6328) at dilution of 1:100 (40x lens). Blue: DAPI for nuclear staining.