

# BNIP3L Rabbit pAb

Catalog No.: A6283 **1 Publications**

## Basic Information

### Observed MW

45KDa/70KDa

### Calculated MW

19kDa/23kDa

### Category

Primary antibody

### Applications

WB, IHC, IF/ICC

### Cross-Reactivity

Human, Mouse, Rat

## Background

This gene encodes a protein that belongs to the pro-apoptotic subfamily within the Bcl-2 family of proteins. The encoded protein binds to Bcl-2 and possesses the BH3 domain. The protein directly targets mitochondria and causes apoptotic changes, including loss of membrane potential and the release of cytochrome c.

## Recommended Dilutions

<b>WB</b>	1:500 - 1:2000
<b>IHC</b>	1:50 - 1:200
<b>IF/ICC</b>	1:50 - 1:200

## Immunogen Information

<b>Gene ID</b>	<b>Swiss Prot</b>
665	O60238

### Immunogen

Recombinant fusion protein containing a sequence corresponding to amino acids 1-187 of human BNIP3L (NP\_004322.1).

### Synonyms

BNIP3L;BNIP3a;NIX

## Contact

 | [www.abclonal.com](http://www.abclonal.com)

## Product Information

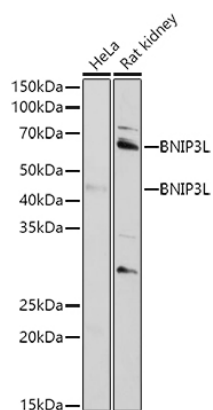
<b>Source</b>	<b>Isotype</b>	<b>Purification</b>
Rabbit	IgG	Affinity purification

### Storage

Store at -20°C. Avoid freeze / thaw cycles.

Buffer: PBS with 0.01% thiomersal, 50% glycerol, pH7.3.

## Validation Data



Western blot analysis of extracts of various cell lines, using BNIP3L antibody (A6283) at 1:1000 dilution.

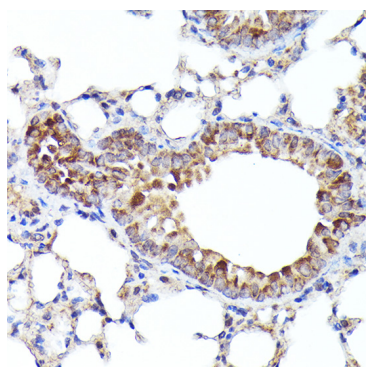
Secondary antibody: HRP Goat Anti-Rabbit IgG (H+L) (A5014) at 1:10000 dilution.

Lysates/proteins: 25ug per lane.

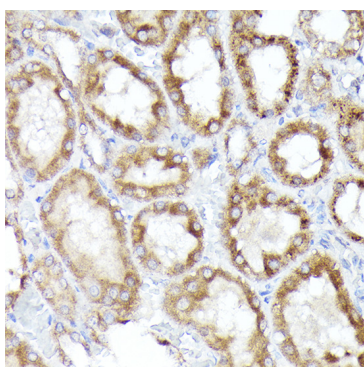
Blocking buffer: 3% nonfat dry milk in TBST.

Detection: ECL Basic Kit (RM00020).

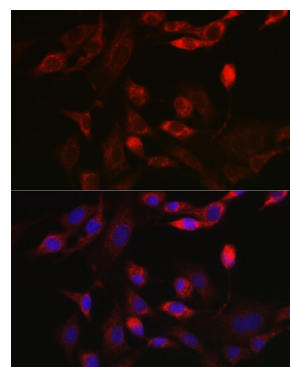
Exposure time: 90s.



Immunohistochemistry of paraffin-embedded mouse lung using BNIP3L Rabbit pAb (A6283) at dilution of 1:100 (40x lens).



Immunohistochemistry of paraffin-embedded rat kidney using BNIP3L Rabbit pAb (A6283) at dilution of 1:100 (40x lens).



Immunofluorescence analysis of NIH/3T3 cells using BNIP3L Rabbit pAb (A6283) at dilution of 1:100 (40x lens). Blue: DAPI for nuclear staining.