

RPS10 Rabbit pAb

Catalog No.: A5880

Basic Information

Observed MW

19kDa

Calculated MW

18kDa

Category

Primary antibody

Applications

WB,IHC,IF/ICC,IP

Cross-Reactivity

Human, Mouse, Rat

Background

Ribosomes, the organelles that catalyze protein synthesis, consist of a small 40S subunit and a large 60S subunit. Together these subunits are composed of 4 RNA species and approximately 80 structurally distinct proteins. This gene encodes a ribosomal protein that is a component of the 40S subunit. The protein belongs to the S10E family of ribosomal proteins. It is located in the cytoplasm. Variable expression of this gene in colorectal cancers compared to adjacent normal tissues has been observed, although no correlation between the level of expression and the severity of the disease has been found. As is typical for genes encoding ribosomal proteins, there are multiple processed pseudogenes of this gene dispersed through the genome. Alternate splicing results in multiple transcript variants that encode the same protein. Naturally occurring read-through transcription occurs between this locus and the neighboring locus NUDT3 (nucleoside diphosphate linked moiety X)-type motif 3).

Recommended Dilutions

WB	1:500 - 1:2000
IHC	1:50 - 1:200
IF/ICC	1:20 - 1:50
IP	1:20 - 1:50

Immunogen Information

Gene ID

6204

Swiss Prot

P46783

Immunogen

Recombinant fusion protein containing a sequence corresponding to amino acids 1-165 of human RPS10 (NP_001190174.1).

Synonyms

RPS10;DBA9;S10;RPS10

Contact

 | www.abclonal.com

Product Information

Source

Rabbit

Isotype

IgG

Purification

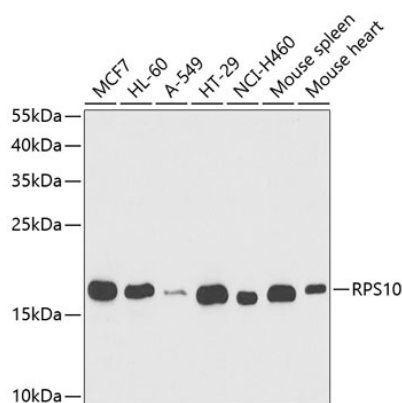
Affinity purification

Storage

Store at -20°C. Avoid freeze / thaw cycles.

Buffer: PBS with 0.02% sodium azide, 50% glycerol, pH7.3.

Validation Data



Western blot analysis of extracts of various cell lines, using RPS10 antibody (A5880) at 1:1000 dilution.

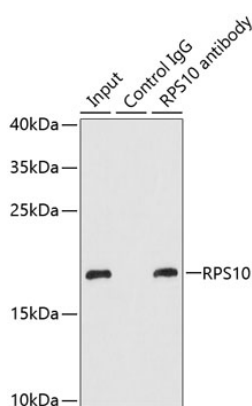
Secondary antibody: HRP Goat Anti-Rabbit IgG (H+L) (A5014) at 1:10000 dilution.

Lysates/proteins: 25ug per lane.

Blocking buffer: 3% nonfat dry milk in TBST.

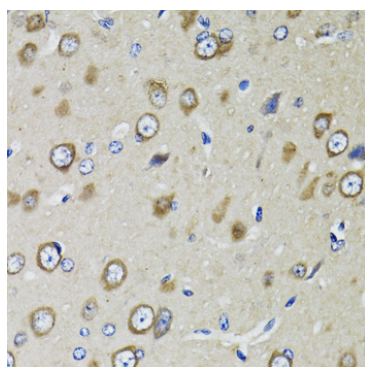
Detection: ECL Basic Kit (RM00020).

Exposure time: 10s.

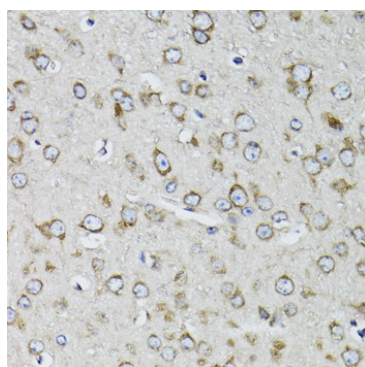


Immunoprecipitation analysis of 200ug extracts of MCF-7 cells using 1ug RPS10 antibody (A5880).

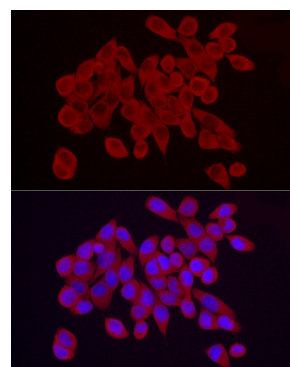
Western blot was performed from the immunoprecipitate using RPS10 antibody (A5880) at a dilution of 1:1000.



Immunohistochemistry of paraffin-embedded rat brain using RPS10 antibody (A5880) at dilution of 1:100 (40x lens). Perform microwave antigen retrieval with 10 mM PBS buffer pH 7.2 before commencing with IHC staining protocol.



Immunohistochemistry of paraffin-embedded mouse brain using RPS10 antibody (A5880) at dilution of 1:100 (40x lens). Perform microwave antigen retrieval with 10 mM PBS buffer pH 7.2 before commencing with IHC staining protocol.



Immunofluorescence analysis of HeLa cells using RPS10 Rabbit pAb (A5880) at dilution of 1:25 (40x lens). Blue: DAPI for nuclear staining.