

# MFF Rabbit pAb

Catalog No.: A4874 **3 Publications**

## Basic Information

### Observed MW

25-37kDa

### Calculated MW

25kDa/27kDa/32kDa/38kDa

### Category

Primary antibody

### Applications

WB,IHC

### Cross-Reactivity

Human, Mouse, Rat

## Background

This is a nuclear gene encoding a protein that functions in mitochondrial and peroxisomal fission. The encoded protein recruits dynamin-1-like protein (DNM1L) to mitochondria. There are multiple pseudogenes for this gene on chromosomes 1, 5, and X. Alternative splicing results in multiple transcript variants.

## Recommended Dilutions

<b>WB</b>	1:100 - 1:500
<b>IHC</b>	1:50 - 1:200

## Immunogen Information

### Gene ID

56947

### Swiss Prot

Q9GZY8

### Immunogen

A synthetic peptide corresponding to a sequence within amino acids 1-100 of human MFF (NP\_064579.3).

### Synonyms

MFF;C2orf33;EMPF2;GL004

## Contact

 | [www.abclonal.com](http://www.abclonal.com)

## Product Information

### Source

Rabbit

### Isotype

IgG

### Purification

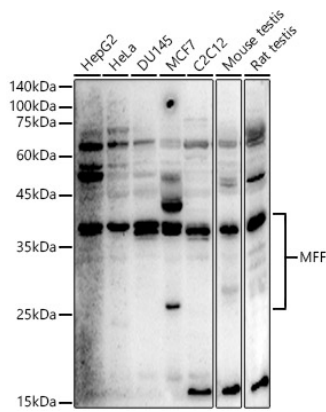
Affinity purification

### Storage

Store at -20°C. Avoid freeze / thaw cycles.

Buffer: PBS with 0.01% thiomersal,50% glycerol,pH7.3.

# Validation Data



Western blot analysis of extracts of various cell lines, using MFF antibody (A4874) at 1:500 dilution.  
Secondary antibody: HRP Goat Anti-Rabbit IgG (H+L) (A5014) at 1:10000 dilution.  
Lysates/proteins: 25ug per lane.  
Blocking buffer: 3% nonfat dry milk in TBST.  
Detection: ECL Enhanced Kit (RM00021).  
Exposure time: 180s.