

# TPPP/p25 Rabbit mAb

Catalog No.: A4637 **Recombinant**

## Basic Information

**Observed MW**

26kDa

**Calculated MW**

25kDa

**Category**

Primary antibody

**Applications**

WB,IHC

**Cross-Reactivity**

Mouse, Rat

**CloneNo number**

ARC1129

## Background

Regulator of microtubule dynamics that plays a key role in myelination by promoting elongation of the myelin sheath. Acts as a microtubule nucleation factor in oligodendrocytes: specifically localizes to the postsynaptic Golgi apparatus region, also named Golgi outpost, and promotes microtubule nucleation, an important step for elongation of the myelin sheath. Required for both uniform polarized growth of distal microtubules as well as directing the branching of proximal processes. Shows magnesium-dependent GTPase activity; the role of the GTPase activity is unclear. In addition to microtubule nucleation activity, also involved in microtubule bundling and stabilization of existing microtubules, thereby maintaining the integrity of the microtubule network. Regulates microtubule dynamics by promoting tubulin acetylation: acts by inhibiting the tubulin deacetylase activity of HDAC6. Also regulates cell migration: phosphorylation by ROCK1 inhibits interaction with HDAC6, resulting in decreased acetylation of tubulin and increased cell motility. Plays a role in cell proliferation by regulating the G1/S-phase transition. Involved in astral microtubule organization and mitotic spindle orientation during early stage of mitosis; this process is regulated by phosphorylation by LIMK2.

## Recommended Dilutions

**WB** 1:500 - 1:2000**IHC** 1:50 - 1:200

## Immunogen Information

**Gene ID**

11076

**Swiss Prot**

O94811

**Immunogen**

A synthetic peptide corresponding to a sequence within amino acids 100-200 of human TPPP/p25 (O94811).

**Synonyms**

TPPP/p25; TPPP1; p24; p25; p25alpha

## Contact

 | [www.abclonal.com](http://www.abclonal.com)

## Product Information

**Source**

Rabbit

**Isotype**

IgG

**Purification**

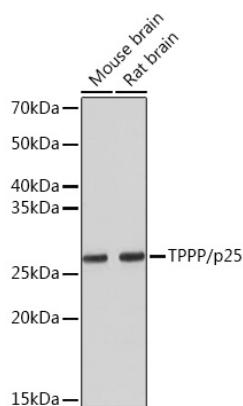
Affinity purification

**Storage**

Store at -20°C. Avoid freeze / thaw cycles.

Buffer: PBS with 0.01% thiomersal, 0.05% BSA, 50% glycerol, pH7.3.

## Validation Data



Western blot analysis of extracts of various cell lines, using TPPP/p25 Rabbit mAb (A4637) at 1:5000 dilution.

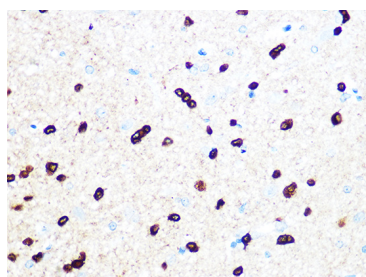
Secondary antibody: HRP Goat Anti-Rabbit IgG (H+L) (A5014) at 1:10000 dilution.

Lysates/proteins: 25ug per lane.

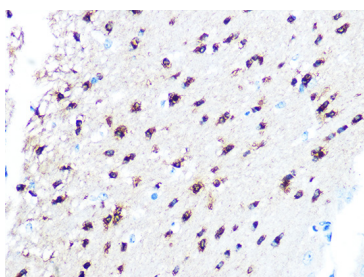
Blocking buffer: 3% nonfat dry milk in TBST.

Detection: ECL Basic Kit (RM00020).

Exposure time: 3min.



Immunohistochemistry of paraffin-embedded rat brain using TPPP/p25 Rabbit mAb (A4637) at dilution of 1:100 (40x lens). Perform microwave antigen retrieval with 10 mM PBS buffer pH 7.2 before commencing with IHC staining protocol.



Immunohistochemistry of paraffin-embedded mouse brain using TPPP/p25 Rabbit mAb (A4637) at dilution of 1:100 (40x lens). Perform microwave antigen retrieval with 10 mM PBS buffer pH 7.2 before commencing with IHC staining protocol.