

# ACE2 Rabbit mAb

Catalog No.: A4612

Recombinant

7 Publications

## Basic Information

**Observed MW**

100KDa/120KDa

**Calculated MW**

92kDa

**Category**

Primary antibody

**Applications**

WB,IHC,IF/ICC

**Cross-Reactivity**

Human, Mouse, Rat

**CloneNo number**

ARC50948

## Background

The protein encoded by this gene belongs to the angiotensin-converting enzyme family of dipeptidyl carboxypeptidases and has considerable homology to human angiotensin 1 converting enzyme. This secreted protein catalyzes the cleavage of angiotensin I into angiotensin 1-9, and angiotensin II into the vasodilator angiotensin 1-7. The organ- and cell-specific expression of this gene suggests that it may play a role in the regulation of cardiovascular and renal function, as well as fertility. In addition, the encoded protein is a functional receptor for the spike glycoprotein of the human coronaviruses SARS and HCoV-NL63. [provided by RefSeq, Jul 2008]

## Recommended Dilutions

<b>WB</b>	1:500 - 1:2000
<b>IHC</b>	1:50 - 1:200
<b>IF/ICC</b>	1:50 - 1:200

## Immunogen Information

**Gene ID**

59272

**Swiss Prot**

Q9BYF1

**Immunogen**

Recombinant fusion protein containing a sequence corresponding to amino acids 18-740 of human ACE2 (NP\_068576.1).

**Synonyms**

ACEH

## Contact

 | [www.abclonal.com](http://www.abclonal.com)

## Product Information

**Source**

Rabbit

**Isotype**

IgG

**Purification**

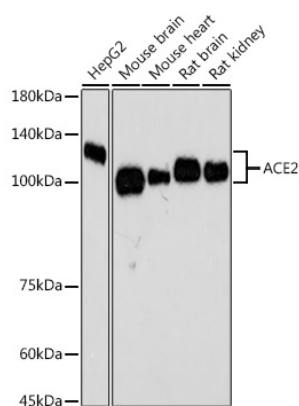
Affinity purification

**Storage**

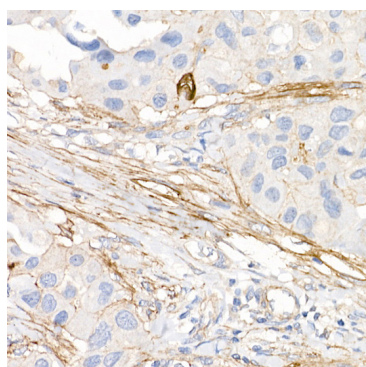
Store at -20°C. Avoid freeze / thaw cycles.

Buffer: PBS with 0.05% proclin300,0.05% BSA,50% glycerol,pH7.3.

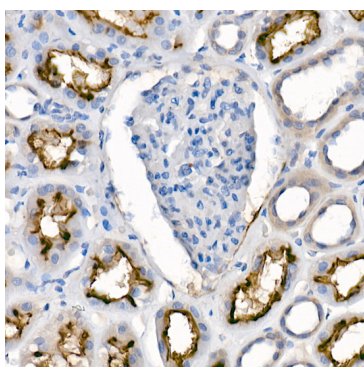
## Validation Data



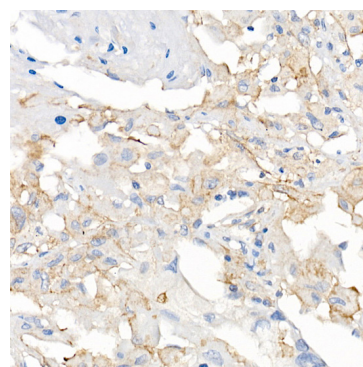
Western blot analysis of extracts of various cell lines, using ACE2 antibody (A4612) at 1:500 dilution.  
 Secondary antibody: HRP Goat Anti-Rabbit IgG (H+L) (AS014) at 1:10000 dilution.  
 Lysates/proteins: 25ug per lane.  
 Blocking buffer: 3% nonfat dry milk in TBST.  
 Detection: ECL Basic Kit (RM00020).  
 Exposure time: 180s.



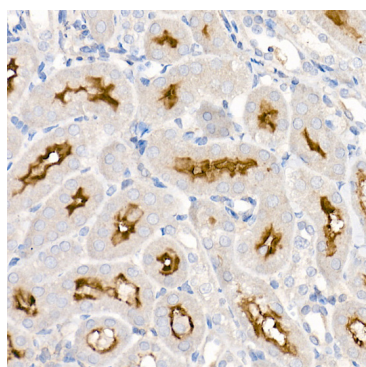
Immunohistochemistry of paraffin-embedded human breast cancer using [KO Validated] ACE2 Rabbit mAb (A4612) at dilution of 1:100(40x lens).



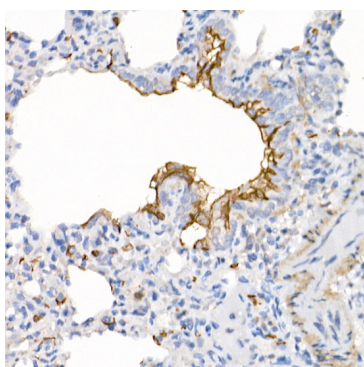
Immunohistochemistry of paraffin-embedded human kidney using [KO Validated] ACE2 Rabbit mAb (A4612) at dilution of 1:100(40x lens).



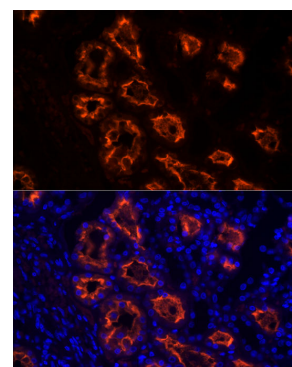
Immunohistochemistry of paraffin-embedded human lung cancer using [KO Validated] ACE2 Rabbit mAb (A4612) at dilution of 1:100(40x lens).



Immunohistochemistry of paraffin-embedded mouse kidney using [KO Validated] ACE2 Rabbit mAb (A4612) at dilution of 1:100(40x lens).



Immunohistochemistry of paraffin-embedded rat lung using [KO Validated] ACE2 Rabbit mAb (A4612) at dilution of 1:100(40x lens).



Immunofluorescence analysis of human kidney using [KO Validated] ACE2 Rabbit mAb (A4612) at dilution of 1:100 (40x lens). Blue: DAPI for nuclear staining.