

# EDA Rabbit pAb

Catalog No.: A2905

## Basic Information

### Observed MW

41kDa

### Calculated MW

14kDa/15kDa/40kDa/41kDa

### Category

Primary antibody

### Applications

WB, IHC, IF/ICC

### Cross-Reactivity

Human, Mouse, Rat

## Background

The protein encoded by this gene is a type II membrane protein that can be cleaved by furin to produce a secreted form. The encoded protein, which belongs to the tumor necrosis factor family, acts as a homotrimer and may be involved in cell-cell signaling during the development of ectodermal organs. Defects in this gene are a cause of ectodermal dysplasia, anhidrotic, which is also known as X-linked hypohidrotic ectodermal dysplasia. Several transcript variants encoding many different isoforms have been found for this gene.

## Recommended Dilutions

WB	1:500 - 1:2000
IHC	1:50 - 1:200
IF/ICC	1:50 - 1:200

## Immunogen Information

Gene ID	Swiss Prot
1896	Q92838

### Immunogen

A synthetic peptide corresponding to a sequence within amino acids 750-850 of human EDA (Q92838).

### Synonyms

EDA; ECTD1; ED1; ED1-A1; ED1-A2; EDA-A1; EDA-A2; EDA1; EDA2; HED; HED1; ODT1; STHAGX1; TNLG7C; XHED; XLHED

## Contact

 | [www.abclonal.com](http://www.abclonal.com)

## Product Information

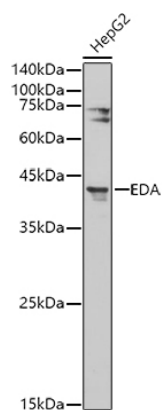
Source	Isotype	Purification
Rabbit	IgG	Affinity purification

### Storage

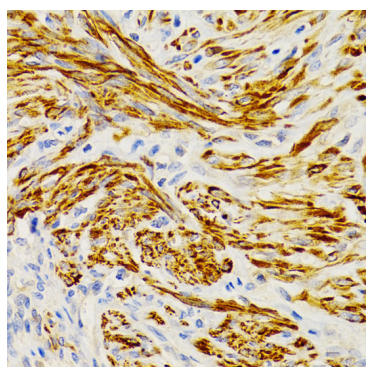
Store at -20°C. Avoid freeze / thaw cycles.

Buffer: PBS with 0.01% thiomersal, 50% glycerol, pH7.3.

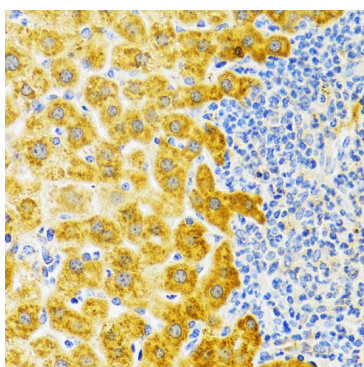
## Validation Data



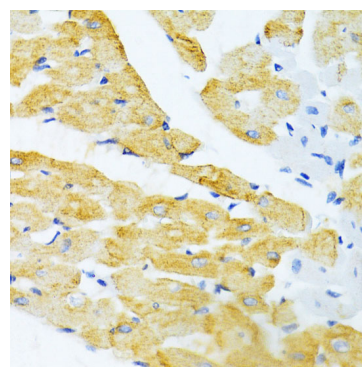
Western blot analysis of extracts of HepG2 cells, using EDA antibody (A2905) at 1:500 dilution.  
Secondary antibody: HRP Goat Anti-Rabbit IgG (H+L) (A5014) at 1:10000 dilution.  
Lysates/proteins: 25ug per lane.  
Blocking buffer: 3% nonfat dry milk in TBST.  
Detection: ECL Basic Kit (RM00020).  
Exposure time: 180s.



Immunohistochemistry of paraffin-embedded human uterine cancer using EDA Antibody (A2905) at dilution of 1:200 (40x lens).



Immunohistochemistry of paraffin-embedded rat liver using EDA Antibody (A2905) at dilution of 1:100 (40x lens).



Immunohistochemistry of paraffin-embedded mouse heart using EDA Antibody (A2905) at dilution of 1:100 (40x lens).