

TRIM21/SS-A Rabbit pAb

Catalog No.: A1957 **2 Publications**

Basic Information

Observed MW

50KDa

Calculated MW

45kDa/54kDa

Category

Primary antibody

Applications

WB,IHC,IF/ICC,IP

Cross-Reactivity

Human, Mouse, Rat

Background

This gene encodes a member of the tripartite motif (TRIM) family. The TRIM motif includes three zinc-binding domains, a RING, a B-box type 1 and a B-box type 2, and a coiled-coil region. The encoded protein is part of the RoSSA ribonucleoprotein, which includes a single polypeptide and one of four small RNA molecules. The RoSSA particle localizes to both the cytoplasm and the nucleus. RoSSA interacts with autoantigens in patients with Sjogren syndrome and systemic lupus erythematosus. Alternatively spliced transcript variants for this gene have been described but the full-length nature of only one has been determined.

Recommended Dilutions

WB	1:500 - 1:2000
IHC	1:10 - 1:100
IF/ICC	1:10 - 1:100
IP	1:10 - 1:100

Immunogen Information

Gene ID

6737

Swiss Prot

P19474

Immunogen

Recombinant fusion protein containing a sequence corresponding to amino acids 86-334 of human TRIM21/SS-A (NP_003132.2).

Synonyms

TRIM21;RNF81;RO52;Ro/SSA;SSA;SSA1

Contact

 | www.abclonal.com

Product Information

Source

Rabbit

Isotype

IgG

Purification

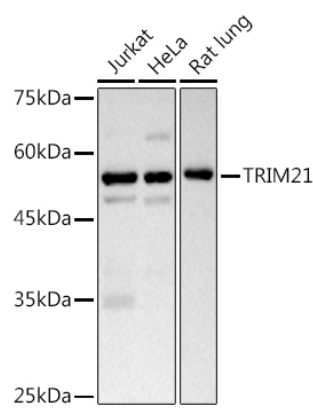
Affinity purification

Storage

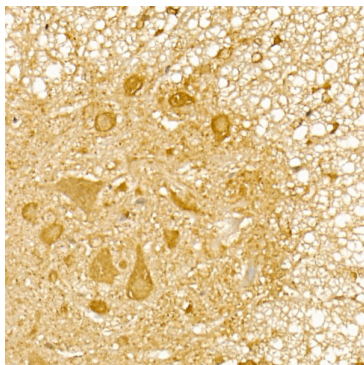
Store at -20°C. Avoid freeze / thaw cycles.

Buffer: PBS with 0.05% proclin300,50% glycerol,pH7.3.

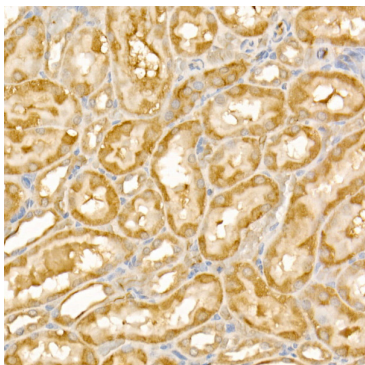
Validation Data



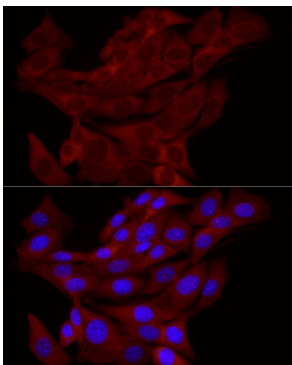
Western blot analysis of extracts of various cell lines, using TRIM21/SS-A antibody (A1957) at 1:1000 dilution.
Secondary antibody: HRP Goat Anti-Rabbit IgG (H+L) (A5014) at 1:10000 dilution.
Lysates/proteins: 25ug per lane.
Blocking buffer: 3% nonfat dry milk in TBST.
Detection: ECL Basic Kit (RM00020).
Exposure time: 180s.



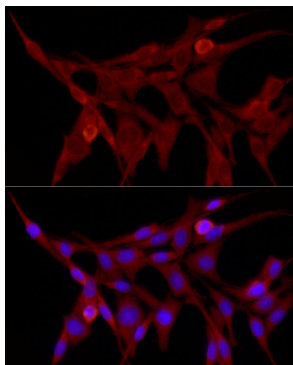
Immunohistochemistry of paraffin-embedded mouse spinal cord using TRIM21/SS-A Rabbit pAb (A1957) at dilution of 1:50 (40x lens). Perform high pressure antigen retrieval with 10 mM citrate buffer pH 6.0 before commencing with IHC staining protocol.



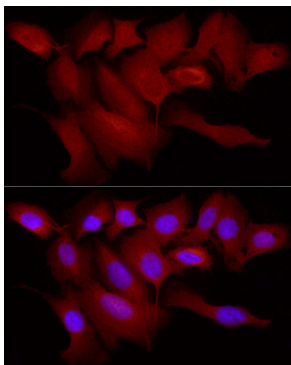
Immunohistochemistry of paraffin-embedded rat kidney using TRIM21/SS-A Rabbit pAb (A1957) at dilution of 1:50 (40x lens). Perform high pressure antigen retrieval with 10 mM citrate buffer pH 6.0 before commencing with IHC staining protocol.



Immunofluorescence analysis of NIH/3T3 cells using TRIM21/SS-A Rabbit pAb (A1957) at dilution of 1:50 (40x lens). Blue: DAPI for nuclear staining.



Immunofluorescence analysis of PC-12 cells using TRIM21/SS-A Rabbit pAb (A1957) at dilution of 1:50 (40x lens). Blue: DAPI for nuclear staining.



Immunofluorescence analysis of U2OS cells using TRIM21/SS-A Rabbit pAb (A1957) at dilution of 1:50 (40x lens). Blue: DAPI for nuclear staining.