

# Zyxin Rabbit pAb

Catalog No.: A2135

## Basic Information

**Observed MW**

78kDa

**Calculated MW**

45kDa/61kDa

**Category**

Primary antibody

**Applications**

WB, IHC, IF/ICC

**Cross-Reactivity**

Human, Mouse, Rat

## Background

Focal adhesions are actin-rich structures that enable cells to adhere to the extracellular matrix and at which protein complexes involved in signal transduction assemble. Zyxin is a zinc-binding phosphoprotein that concentrates at focal adhesions and along the actin cytoskeleton. Zyxin has an N-terminal proline-rich domain and three LIM domains in its C-terminal half. The proline-rich domain may interact with SH3 domains of proteins involved in signal transduction pathways while the LIM domains are likely involved in protein-protein binding. Zyxin may function as a messenger in the signal transduction pathway that mediates adhesion-stimulated changes in gene expression and may modulate the cytoskeletal organization of actin bundles. Alternative splicing results in multiple transcript variants that encode the same isoform.

## Recommended Dilutions

<b>WB</b>	1:500 - 1:2000
<b>IHC</b>	1:50 - 1:200
<b>IF/ICC</b>	1:50 - 1:200

## Immunogen Information

**Gene ID**

7791

**Swiss Prot**

Q15942

**Immunogen**

Recombinant fusion protein containing a sequence corresponding to amino acids 350-572 of human Zyxin (NP\_003452.1).

**Synonyms**

ZYG;ESP-2;HED-2;zyxin

## Contact

 | [www.abclonal.com](http://www.abclonal.com)

## Product Information

**Source**

Rabbit

**Isotype**

IgG

**Purification**

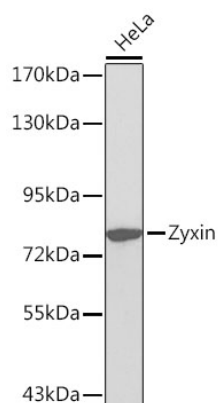
Affinity purification

**Storage**

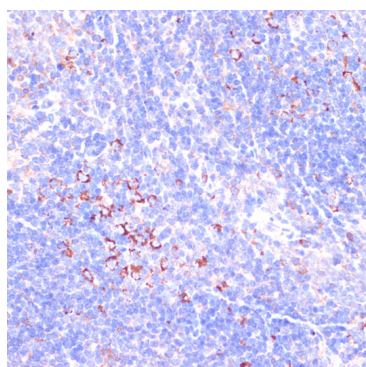
Store at -20°C. Avoid freeze / thaw cycles.

Buffer: PBS with 0.01% thiomersal, 50% glycerol, pH7.3.

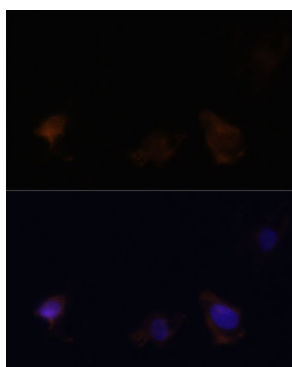
## Validation Data



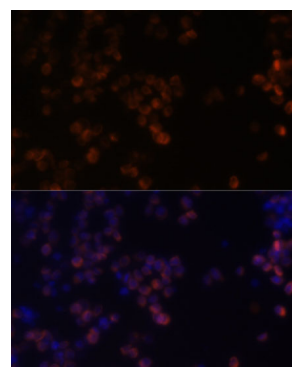
Western blot analysis of extracts of HeLa cells, using Zyxinin antibody (A2135).  
Secondary antibody: HRP Goat Anti-Rabbit IgG (H+L) (AS014) at 1:10000 dilution.  
Lysates/proteins: 25ug per lane.  
Blocking buffer: 3% nonfat dry milk in TBST.



Immunohistochemistry of paraffin-embedded mouse spleen using Zyxinin antibody (A2135) at dilution of 1:100 (40x lens).



Immunofluorescence analysis of C6 cells using Zyxinin antibody (A2135) at dilution of 1:100. Blue: DAPI for nuclear staining.



Immunofluorescence analysis of Raw264.7 cells using Zyxinin antibody (A2135) at dilution of 1:100. Blue: DAPI for nuclear staining.