

Histone H3 Rabbit pAb

Catalog No.: A2348 **90 Publications**

Basic Information

Observed MW

17kDa

Calculated MW

15kDa

Category

Primary antibody

Applications

WB, IHC, IP, ChIP

Cross-Reactivity

Human, Mouse, Rat, Other (Wide Range)

Background

Histones are basic nuclear proteins that are responsible for the nucleosome structure of the chromosomal fiber in eukaryotes. Nucleosomes consist of approximately 146 bp of DNA wrapped around a histone octamer composed of pairs of each of the four core histones (H2A, H2B, H3, and H4). The chromatin fiber is further compacted through the interaction of a linker histone, H1, with the DNA between the nucleosomes to form higher order chromatin structures. This gene is intronless and encodes a replication-dependent histone that is a member of the histone H3 family. Transcripts from this gene lack polyA tails; instead, they contain a palindromic termination element. This gene is located separately from the other H3 genes that are in the histone gene cluster on chromosome 6p22-p21.3.

Recommended Dilutions

WB	1:500 - 1:2000
IHC	1:50 - 1:200
IP	1:50 - 1:200
ChIP	1:50 - 1:200

Immunogen Information

Gene ID	Swiss Prot
8290	Q16695

Immunogen

A synthetic peptide corresponding to a sequence within amino acids 50 to the C-terminus of human HIST3H3 (NP_003484.1).

Synonyms

H3.4;H3/g;H3FT;H3t;HIST3H3;Histone H3;HIST1H3A

Contact

 | www.abclonal.com

Product Information

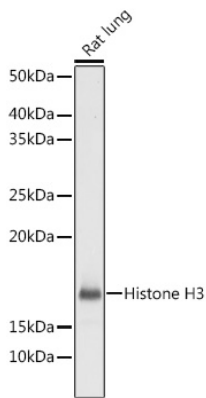
Source	Isotype	Purification
Rabbit	IgG	Affinity purification

Storage

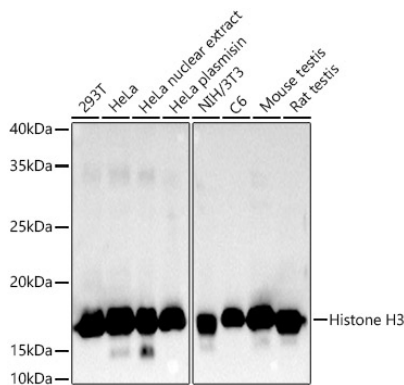
Store at -20°C. Avoid freeze / thaw cycles.

Buffer: PBS with 0.01% thiomersal, 50% glycerol, pH7.3.

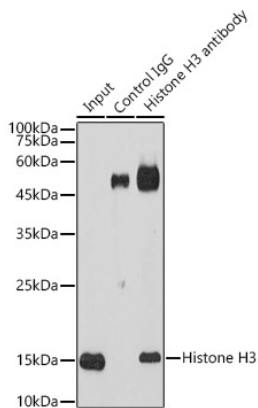
Validation Data



Western blot analysis of extracts of Rat lung, using Histone H3 antibody (A2348) at 1:1000 dilution.
Secondary antibody: HRP Goat Anti-Rabbit IgG (H+L) (AS014) at 1:10000 dilution.
Lysates/proteins: 25ug per lane.
Blocking buffer: 3% nonfat dry milk in TBST.
Detection: ECL Basic Kit (RM00020).
Exposure time: 1s.

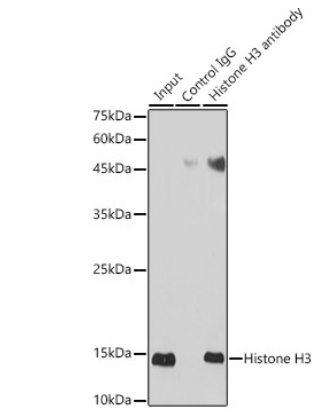


Western blot analysis of extracts of various cell lines, using Histone H3 antibody (A2348) at 1:5000 dilution.
Secondary antibody: HRP Goat Anti-Rabbit IgG (H+L) (AS014) at 1:10000 dilution.
Lysates/proteins: 25ug per lane.
Blocking buffer: 3% nonfat dry milk in TBST.
Detection: ECL Basic Kit (RM00020).
Exposure time: 10s.

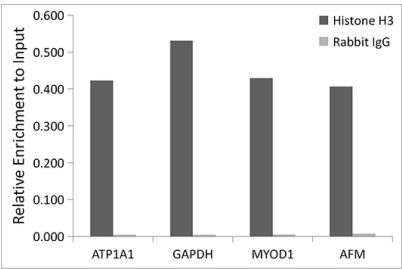


Immunoprecipitation analysis of 600ug extracts of HeLa cells using 10ug Histone H3 antibody (A2348). Western blot was performed from the immunoprecipitate using Histone H3 antibody (A2348) at a dilution of 1:30000.

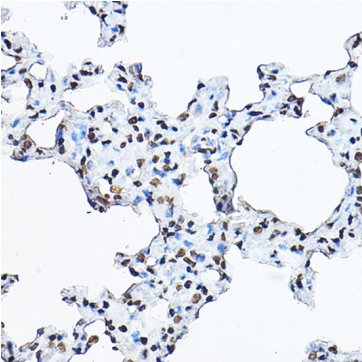
Validation Data



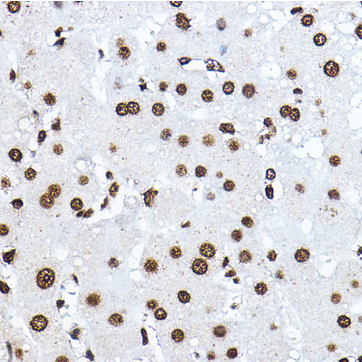
Immunoprecipitation analysis of 600ug extracts of HeLa cells using 10ug Histone H3 antibody (A2348). Western blot was performed from the immunoprecipitate using Histone H3 antibody (A2348) at a dilution of 1:30000.



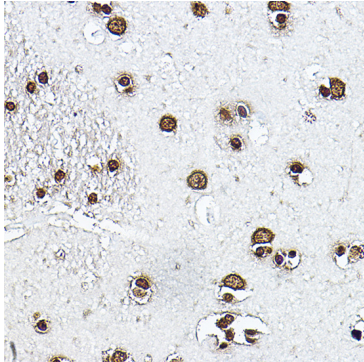
Chromatin immunoprecipitation analysis of extracts of 293T cells, using Histone H3 antibody (A2348) and rabbit IgG. The amount of immunoprecipitated DNA was checked by quantitative PCR. Histogram was constructed by the ratios of the immunoprecipitated DNA to the input.



Immunohistochemistry of paraffin-embedded rat lung using Histone H3 Rabbit pAb (A2348) at dilution of 1:100 (40x lens). Perform high pressure antigen retrieval with 10 mM citrate buffer pH 6.0 before commencing with IHC staining protocol.

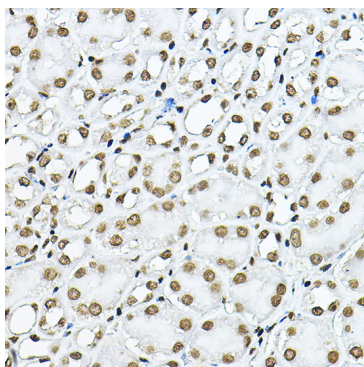


Immunohistochemistry of paraffin-embedded human liver using Histone H3 Rabbit pAb (A2348) at dilution of 1:100 (40x lens). Perform high pressure antigen retrieval with 10 mM citrate buffer pH 6.0 before commencing with IHC staining protocol.



Immunohistochemistry of paraffin-embedded human brain using Histone H3 Rabbit pAb (A2348) at dilution of 1:100 (40x lens). Perform high pressure antigen retrieval with 10 mM citrate buffer pH 6.0 before commencing with IHC staining protocol.

Validation Data



Immunohistochemistry of paraffin-embedded mouse kidney using Histone H3 Rabbit pAb (A2348) at dilution of 1:100 (40x lens). Perform high pressure antigen retrieval with 10 mM citrate buffer pH 6.0 before commencing with IHC staining protocol.